

PETALUMA
COUNTRY CLUB
ESTATES

UNIT 2A PHASE I



TREE DESCRIPTION

TREE NO.	DIAMETER	COMMON NAME	BOTANICAL NAME
52	7"	COAST LIVE OAK	QUERCUS AGRIFOLIA
53	75"	BAY	UMBELLULARIA CALIFORNICA
54	26"	BUCKEYE	AESCULUS CALIFORNICA
55	10"	BUCKEYE	AESCULUS CALIFORNICA
56	45"	COAST LIVE OAK	QUERCUS AGRIFOLIA
57	48"	VALLEY OAK	QUERCUS LOBATA
58	25"	VALLEY OAK	QUERCUS LOBATA
59	29"	COAST LIVE OAK	QUERCUS AGRIFOLIA
* 60	5"	COAST LIVE OAK	QUERCUS AGRIFOLIA

* To be removed

LEGEND

- MATURE TREE LOCATION
Greater than 4' trunk diameter
- SMALL TREE TO BE REMOVED
Less than 4' trunk diameter.
- ⊙ MATURE TREE TO BE REMOVED

OWNERS

PETALUMA COUNTRY CLUB ESTATES
GENERAL PARTNERSHIP
108 KENTUCKY STREET
PETALUMA, CALIFORNIA 94952

LANDSCAPE ARCHITECTS

ZAC LANDSCAPE ARCHITECTS
145 KELLER STREET
PETALUMA, CALIFORNIA 94952

WALTER P. BEMIS, ARBORIST



SCALE 1"=40'-0"

RECEIVED
SEP 20 1993

COMMUNITY DEVELOPMENT

SUBMISSION TO THE CITY OF PETALUMA

TREE STUDY PLAN
UNIT 2A PHASE I



- 36 TREES TO BE REMOVED
340 17" UMBELLULARIA CALIFORNICA
34E 7'0" UMBELLULARIA CALIFORNICA
35 34" QUERCUS AGRIFOLIA

NOTES

1. FENCING ALONG PROPERTY LINES IS DISCOURAGED. WHERE FENCING IS PROVIDED WITH HOMES, IT SHALL MEET THE REQUIREMENTS AND DETAILS SHOWN WITHIN THE PLANNED UNIT DEVELOPMENT GUIDELINES.

2. BUILDING ENVELOPES ARE SHOWN ON THIS PLAN. SETBACKS FROM PROPERTY LINES SHALL MEET THE MINIMUMS ALLOWED WITHIN THE APPROVED PLANNED UNIT DEVELOPMENT GUIDELINES FOR SIDE, FRONT AND REAR LINES. WHERE SETBACKS AS NOTED ON THIS PLAN EXCEED THE MINIMUMS IN THE P.U.D. GUIDELINES, LESSER SETBACKS SHALL REQUIRE REVIEW AND APPROVAL BY ADMINISTRATIVE S.P.A.R.C.

3. A LANDSCAPE AND REPLANTING PLAN DATED MARCH 1, 1996 HAS BEEN DEVELOPED FOR THIS PLANNED UNIT DEVELOPMENT. VISUAL MITIGATION PLANTING, REPLACEMENT TREES, AND STREET TREE PLANTING ARE REQUIRED PER THIS APPROVED PLAN. STREET TREE PLANTING OF ONE TREE FOR EVERY 20' OF LOT FRONTAGE IS REQUIRED TO BE PLANTED BY THE HOMEOWNER IN ACCORDANCE WITH THE PLAN AND THE PLANNED UNIT DEVELOPMENT GUIDELINES. VISUAL MITIGATION AND REPLACEMENT TREES ARE TO BE PLANTED AT THE TIME OF CONSTRUCTION OF THE STREETS AND UTILITIES FOR EACH PHASE OF THE SUBDIVISION.

COUNTRY CLUB ESTATES UNIT 2A & 3A		PHASE III		PLANNED UNIT DEVELOPMENT PLAN	
DESIGNED BY:	BD	DRAWN BY:	BD	CHECKED BY:	BD
SHEET	OF	SCALE:	1" = 30'	JOB NO.	1457

Mogel Engineering, Inc.
REGISTERED CIVIL ENGINEERS
179 H Street
Petaluma, Ca. 94952
Ph. 707-763-9044

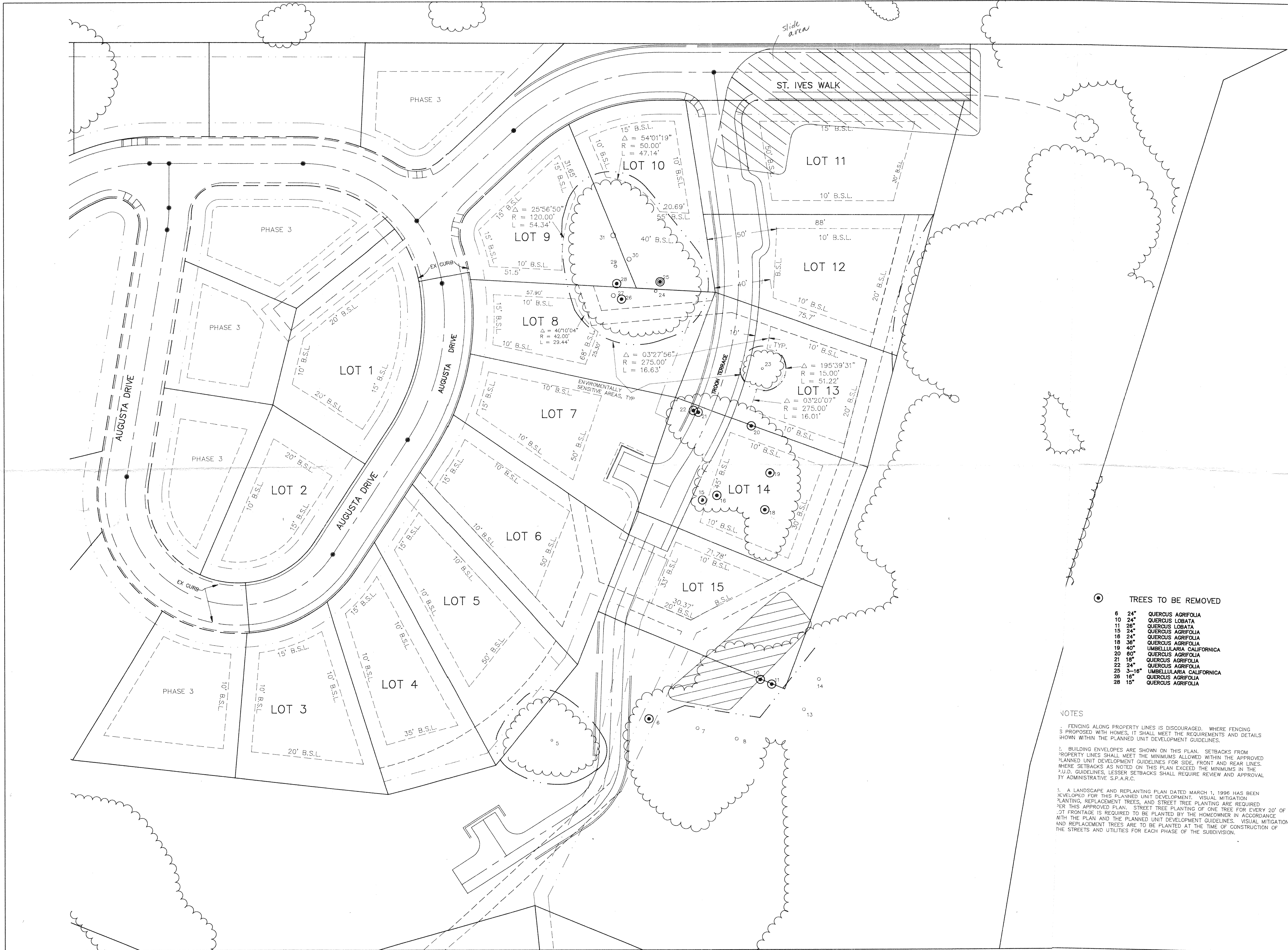
REGISTERED PROFESSIONAL ENGINEER
BRUCE A. MOGEL
No. 24915
1962-1998
12-31-07
CIVIL
STATE OF CALIFORNIA

APPROVED BY:
Bruce A. Mogel

COPYRIGHT
MOGEL
ENGINEERING, INC.

REVISION
7-30-97
ISSUED
8
NO.

DATE
7-30-97
BY
BD



- TREES TO BE REMOVED
- | | | |
|----|-------|--------------------------|
| 6 | 24" | QUERCUS AGRIFOLIA |
| 10 | 24" | QUERCUS LOBATA |
| 11 | 26" | QUERCUS LOBATA |
| 15 | 24" | QUERCUS AGRIFOLIA |
| 18 | 24" | QUERCUS AGRIFOLIA |
| 18 | 36" | QUERCUS AGRIFOLIA |
| 19 | 40" | UMBELLULARIA CALIFORNICA |
| 20 | 60" | QUERCUS AGRIFOLIA |
| 21 | 18" | QUERCUS AGRIFOLIA |
| 22 | 24" | QUERCUS AGRIFOLIA |
| 23 | 3-16" | UMBELLULARIA CALIFORNICA |
| 26 | 18" | QUERCUS AGRIFOLIA |
| 28 | 15" | QUERCUS AGRIFOLIA |

NOTES

1. FENCING ALONG PROPERTY LINES IS DISCOURAGED. WHERE FENCING IS PROPOSED WITH HOMES, IT SHALL MEET THE REQUIREMENTS AND DETAILS SHOWN WITHIN THE PLANNED UNIT DEVELOPMENT GUIDELINES.
2. BUILDING ENVELOPES ARE SHOWN ON THIS PLAN. SETBACKS FROM PROPERTY LINES SHALL MEET THE MINIMUMS ALLOWED WITHIN THE APPROVED PLANNED UNIT DEVELOPMENT GUIDELINES FOR SIDE, FRONT AND REAR LINES. WHERE SETBACKS AS NOTED ON THIS PLAN EXCEED THE MINIMUMS IN THE P.U.D. GUIDELINES, LESSER SETBACKS SHALL REQUIRE REVIEW AND APPROVAL BY ADMINISTRATIVE S.P.A.R.C.
3. A LANDSCAPE AND REPLANTING PLAN DATED MARCH 1, 1996 HAS BEEN DEVELOPED FOR THIS PLANNED UNIT DEVELOPMENT. VISUAL MITIGATION PLANTING, REPLACEMENT TREES, AND STREET TREE PLANTING ARE REQUIRED PER THIS APPROVED PLAN. STREET TREE PLANTING OF ONE TREE FOR EVERY 20' OF LOT FRONTAGE IS REQUIRED TO BE PLANTED BY THE HOMEOWNER IN ACCORDANCE WITH THE PLAN AND THE PLANNED UNIT DEVELOPMENT GUIDELINES. VISUAL MITIGATION AND REPLACEMENT TREES ARE TO BE PLANTED AT THE TIME OF CONSTRUCTION OF THE STREETS AND UTILITIES FOR EACH PHASE OF THE SUBDIVISION.

DESIGNED BY: BD		DRAWN BY: BD	
CHECKED BY: BD		SCALE: 1"=30'	
1 SHEET OF 1		JOB NO. 1457.7	

COUNTRY CLUB ESTATES UNIT 2A & 3A PHASE 4
PHASE 4
PLANNED UNIT DEVELOPMENT PLAN

Mogel Engineering, Inc.
REGISTERED CIVIL ENGINEERS
179 H Street
Petaluma, Ca. 94952
Ph. 707-763-9044

ENGINEERING

APPROVED BY:
Bonnie A. O'Fudon

COPYRIGHT
MOGEL ENGINEERING, INC.

NO.	DATE	REVISION	BY
0	9-17-97	ISSUED	