



PSCC & The Floathouse Petaluma Boat Rental Center



Petaluma River is Petaluma's Longest Park.
The Floathouse is A Community Center on The Water.



Even before Petaluma came to be, the river gave life.





In modern times, it became the region's
“saltwater highway”, carrying everything from lumber to eggs



DECKER
PETALUMA

B5-15 92-209.6



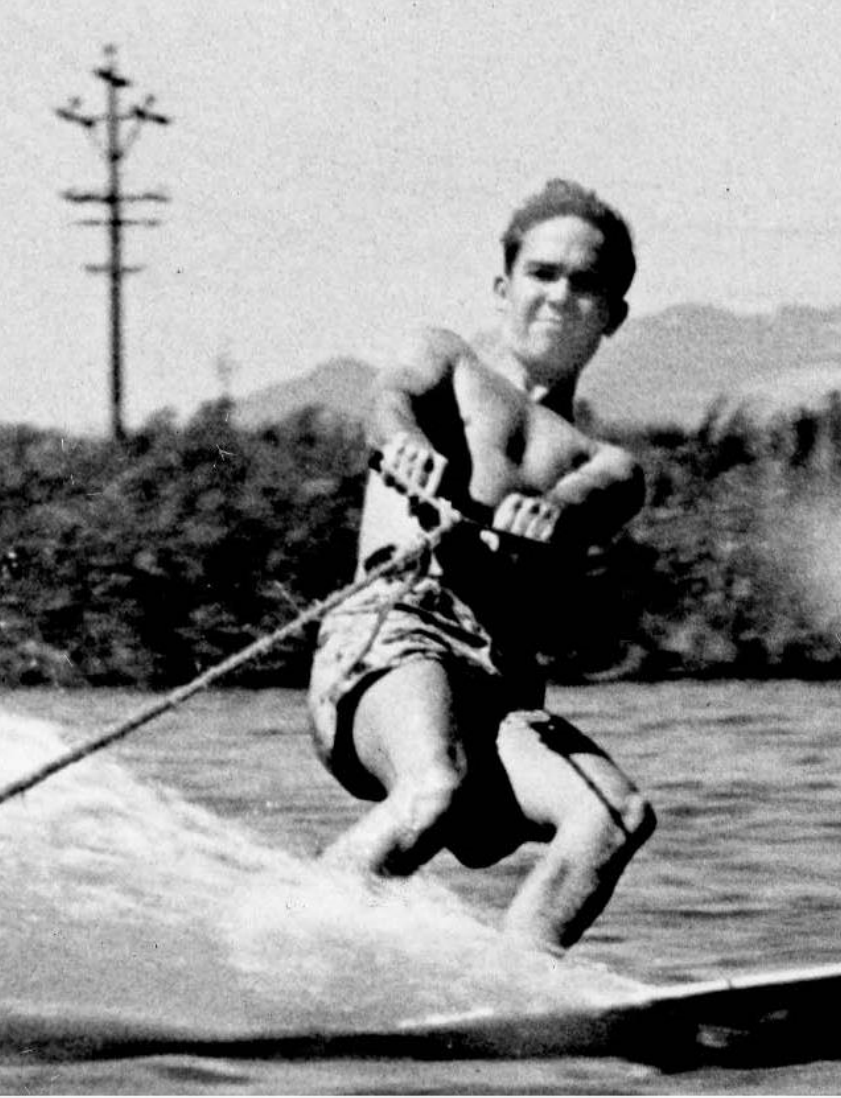
Its history is our history





Its future is our future





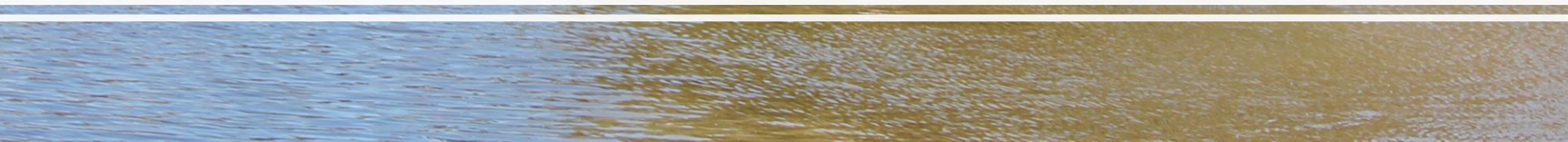
Its excitement is our excitement.



Forever relevant, it reflects our changing community.



Its challenges are our challenges.



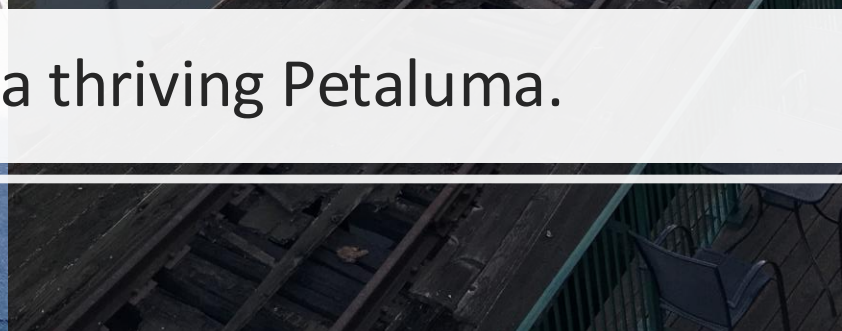


Sidenote: In 2017, we named this mudflat “Siltigan’s Island”, set up camp, and organized Hands Across The Mud.



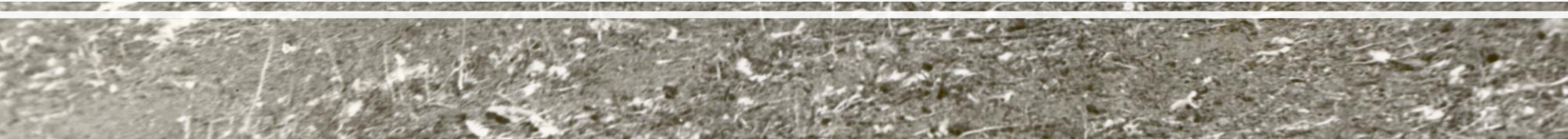


A thriving Petaluma River is a thriving Petaluma.





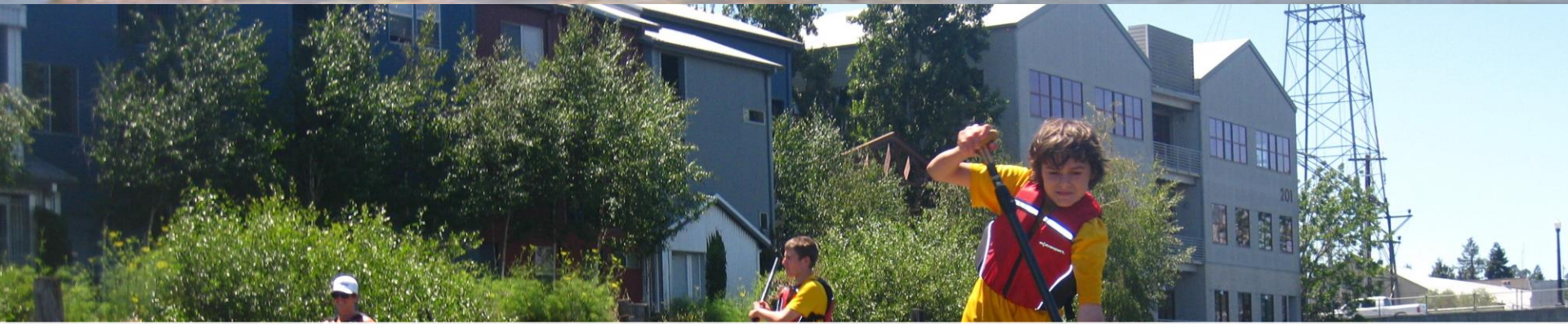
The river gave our town life.





We're bringing life back to the river.





PSCC was founded in 2006 as a coalition of boating clubs, businesses and river advocates.





Our mission is to provide river access for all
through programs like summer camps and facilities like The Floathouse.



For more than a decade, we've worked with the whole river community to expand access to Petaluma's Longest Park, The Petaluma River

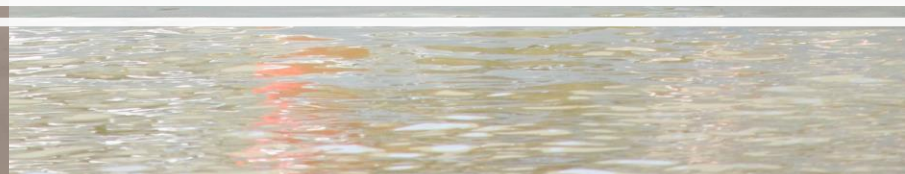
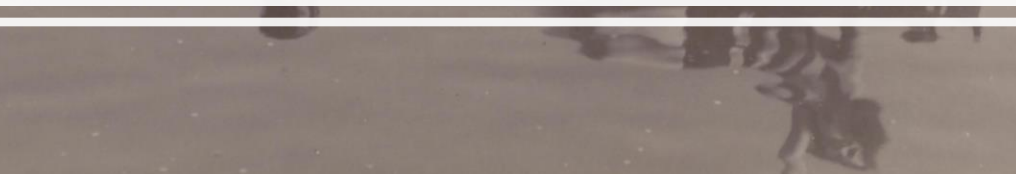


...stretching 13 miles from Basin to Bay



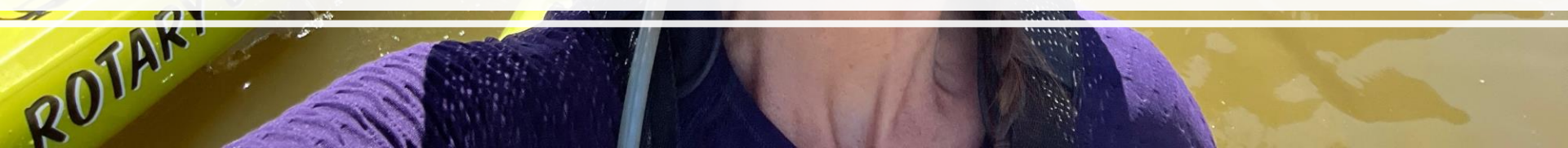


In that, we continue a proud Petaluma tradition:





Putting butts in boats & smiles on faces

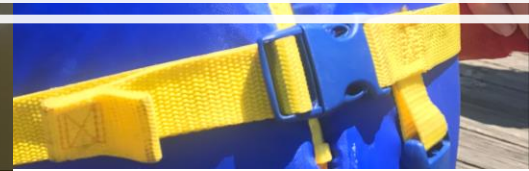




In 2007, when we held the first Day on The River, putting 100s of people in dozens of small craft of all shapes and sizes,



We promised that if they helped us build The Floathouse,
“Every day could be a Day on The River.”





..what it would mean to the community to have The Floathouse right here on the river: a local facility and fleet available to everyone, year-round.



Since 2007, holding annual summer camps, we've introduced new generations to our storied waterway.

30-50 kids/year x 17 years = 500-850 kids so far!



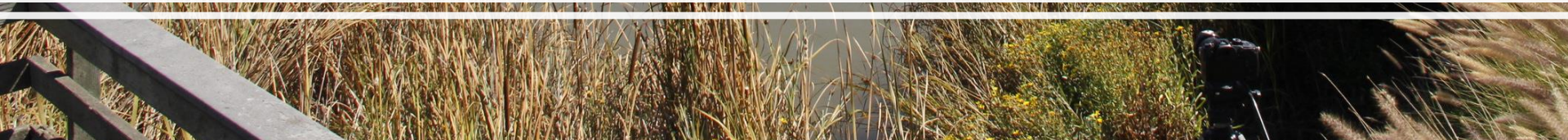


We partner with local clubs and organizations, & sometimes our campers become competitors &/or wetlands advocates!



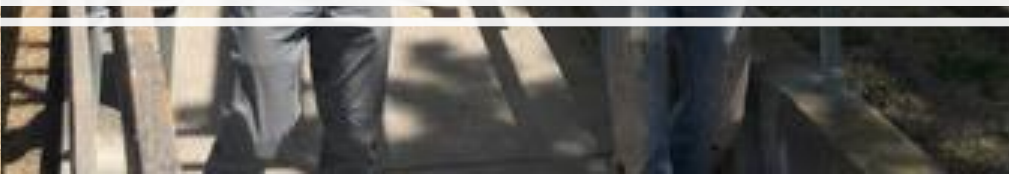
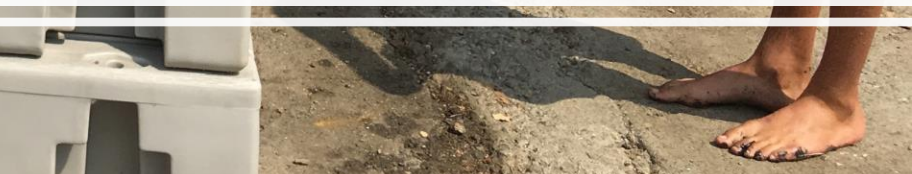


It took a village, and nearly *1.5 million dollars* of community donations, to build this river access for all: piling by piling...



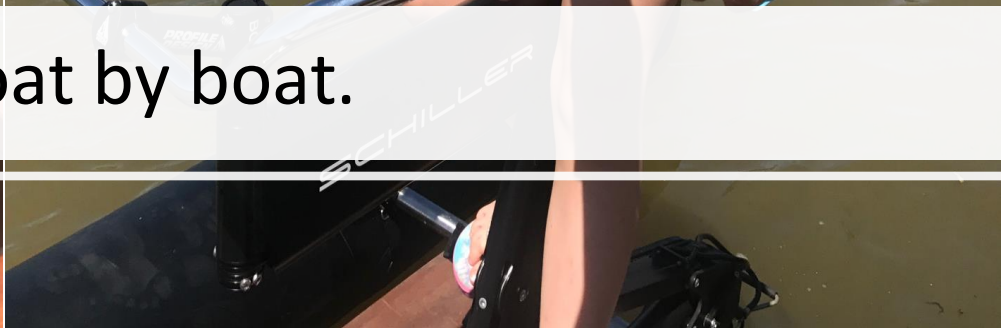
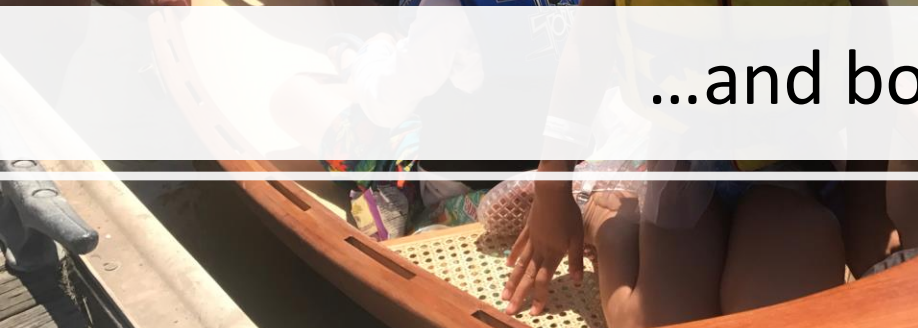


..dock by dock, rack by rack..





...and boat by boat.





Together, we've come a long way.



Since October, 2022, we've welcomed 2,500 people onto the Petaluma River in 16 different *varieties* of watercraft.



We've made the downtown turning basin a hub for quintessentially Petaluman gatherings, events, and celebrations. This is what place-based community building looks like.



Working together: We've given free rides to Guide Dogs for The Blind, free camps to Mentees, collaborated with schools, nonprofits and organizations across the community.



PETALUMA

2024-2025 VISITOR MAGAZINE

We've transformed "Petaluma River Access for All"
from a dream to reality.





A word about access.



Today, in our second year with our own facility and fleet, we can say that we've started to achieve our mission.



But the work has only just begun.



Introducing Petaluma Water Ways: True River Access for ALL



Did you know?

The Floathouse is one of 30+ connected sites Petaluma Water Ways, Petaluma's river-centric vision for health, recreation, property values, and economic development.



What is Petaluma Water Ways?

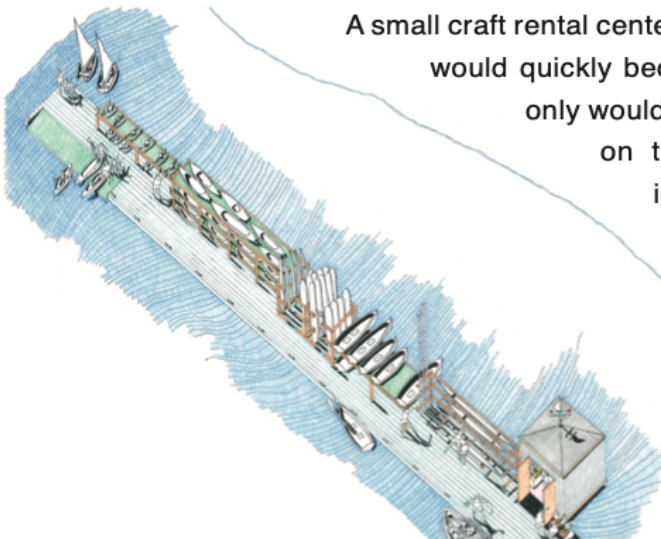
78 acres of trails, parks and river access

3.5 miles of river within Petaluma City bounds, from Shollenberger Park to Copeland Crossing

Described and envisioned with studies funded by two National Park Service grants

This is the PWW page for what became The Floathouse.

Small Craft Rental Center



A small craft rental center located in Petaluma's downtown Turning Basin would quickly become a fixture on the Petaluma waterfront. Not only would the business provide much needed boat rentals on the Petaluma River, but it would become an integral part of the community; complementing Petaluma's recreational and educational resources through an offering of classes, camps, and a variety of boating promotions and events.

What's happening with Petaluma Water Ways?

The PWW Plan was accepted and championed by the City of Petaluma in 2011.

However...

- The PWW map and plan no longer appear on the City website.
- There is no City policy covering riverfront usage or river access.
- Nonprofits must negotiate river access in a piecemeal fashion.
- Public uses of the river are threatened by incompatible riverfront development.



Public/City dock at McNear Landing



Friends of the Petaluma River dock

Look more closely at this public dock at McNear Circle,
where Petaluma's first boathouse once stood.
It is adorned by a sign penalizing access.



What is River Access for ALL?

How can the City of Petaluma and its river-centric nonprofits work together...



HISTORIC DOWNTOWN TRESTLE

Restoration of Petaluma's historic 500-foot long railroad trestle is a necessary link

in completing Petaluma's riverfront trail system and historic Petaluma & Santa Rosa Railroad operations (in the form of a trolley). The move to restore and reconstruct this trestle has been in the works for many years.

Trestle abutments, piles, support structure and wood decking are not currently capable of supporting either pedestrian or trolley loads. Phase I is a grant to study geotechnical and structural conditions to design an effective rehabilitation of the Petaluma trestle and stabilization of the riverbank beneath. The project includes analysis of and design plans for: the trestle structure, improvement of the trestle deck, bank stabilization as identified through the analysis, replacement of the railroad tracks, interpretive panels for riverfront history and wayfinding, completion of the Petaluma River Trail for safe passage of bicyclists and pedestrians, and environmental review of the proposed designs to assess any potential impacts and provide appropriate mitigation measures where necessary. Restoration design will incorporate recreational, environmental, educational, and accessibility elements for public access,



After: A schematic by the Petaluma Trolley Living History Museum shows the trestle after renovation. Image courtesy of <http://www.petalumatrolley.com>



Before: Participants in the Mayor's Boat Ride with the trestle and Theater District buildings in the background. Photo: Greg Sabourin

**PETALUMA
WATERWAYS**

PETALUMAWATERWAYS.ORG

to transform Petaluma Water Ways from an ideal into reality? How can we invigorate Petaluma's Longest Park as an engine for community health as well as economic well being??



STEAMER LANDING PARK

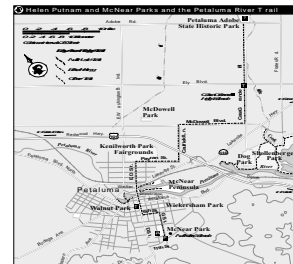
15

This 1.93-acre park serves as the gateway to the historic McNear Peninsula, destined to become a major "central park" in the heart of Petaluma. The San Francisco Bay Area Ridge Trail shows McNear Peninsula as a side tour along the historic urban waterfront, where you can see river-dependent businesses as they have operated in Petaluma since the 1800s.

Moderate parking at Steamer Landing Park allows easy access to this convergence of Petaluma Water Ways pedestrian, bike, and water trails. The park offers river overlooks, and future plans call for additional trails, interpretive features, small craft docks and restoration. Steamer Landing Park also allows access to the David Yearsley River Heritage Center (16), housed in an historic livery stable on the McNear Peninsula and serving as the venue for educational and small-craft programming provided by the non-profit, Friends of The Petaluma River.



McNear Peninsula will be the centerpiece of the string of jewels comprising Petaluma Water Ways.



McNear Peninsula, at the crossroads of several regional trail systems, including the San Francisco Bay Area Ridge Trail, is destined to be a vital "central park" for the area's citizens.

**PETALUMA
WATER WAYS**

PETALUMAWATERWAYS.ORG



At PSCC, our motto is, "If we can dream it, we can do it."
How about you?