

# Health, Equity, and Environmental Justice Policy Framework

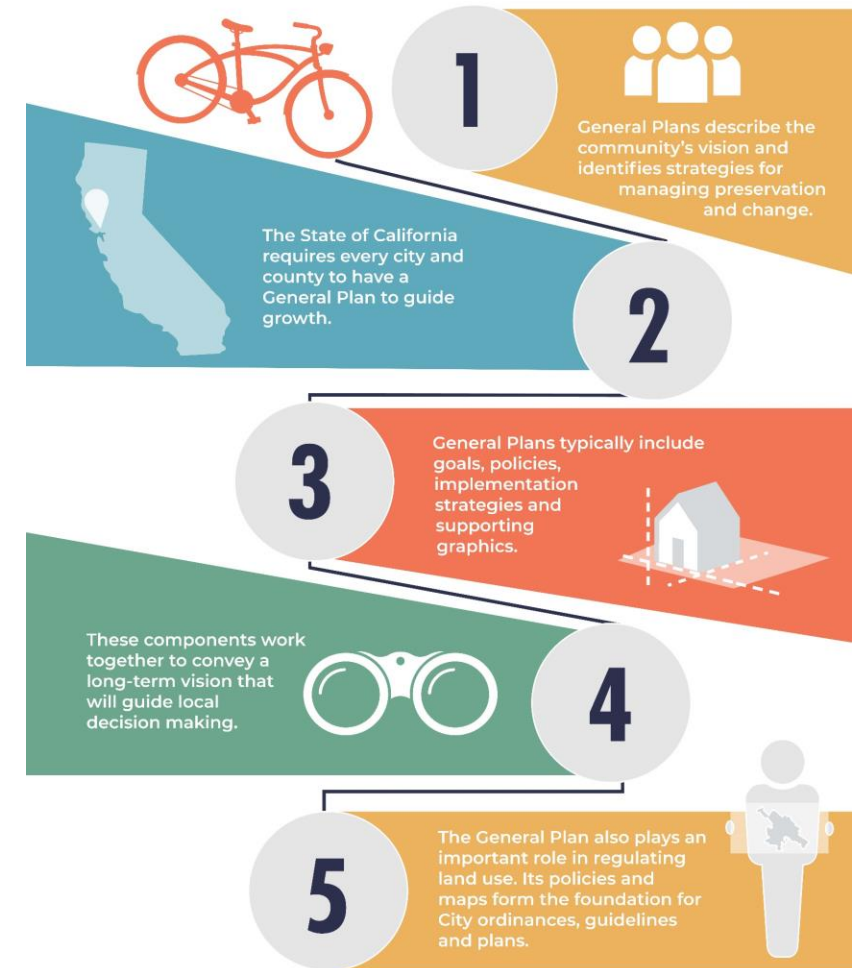
May 9, 2024

# Purpose of a General Plan

- Enables the community to come together to develop a **shared vision** for the next 20-30 years
- Long-term policy document to **guide future actions**
  - Preserves and enhances **community strengths**
  - Addresses **topics of concern**
- **Capital improvements and future land use decisions** must be consistent with the general plan

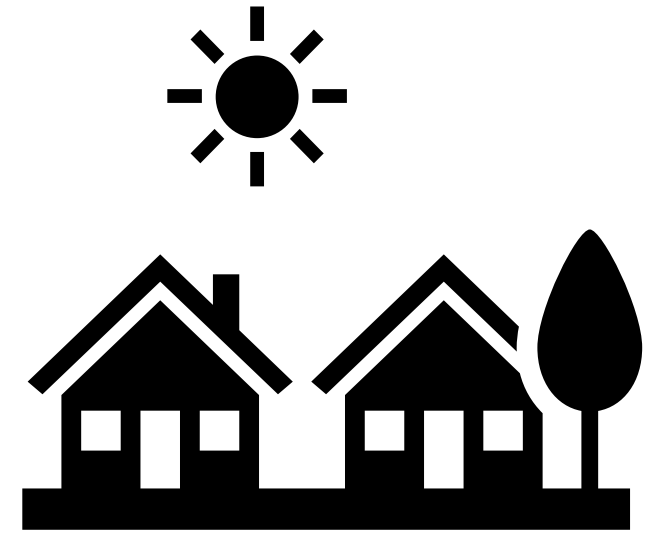
## WHAT IS A GENERAL PLAN?

*A General Plan is like a road map for the future of Petaluma*



# Examples of the General Plan's Everyday Impacts

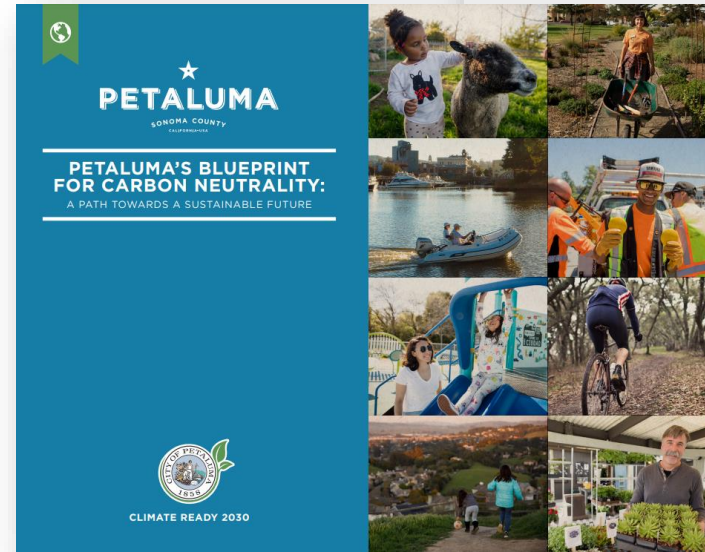
- **Housing** choices and affordability
- **Jobs** and economic development
- How to **travel** to school, work, and shopping
- **Greenhouse gas** reduction
- Habitat and **open space** preservation
- **Parks** locations and the urban forest
- Mitigation of **hazards** like floods and wildfire
- Equity, health, and **environmental justice**
- **Community character**, local culture, and historic preservation
- Community **participation** in local government



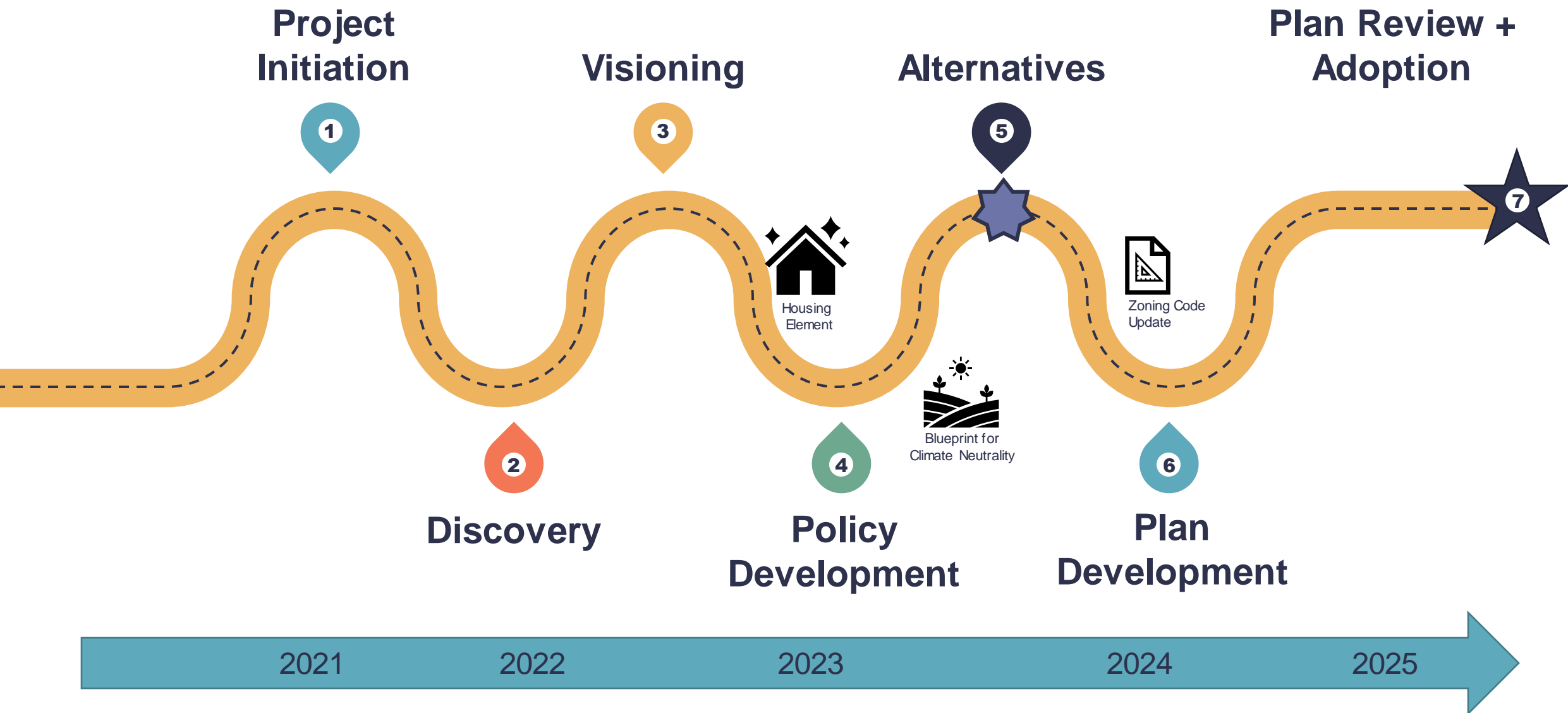


# Petaluma's General Plan Update

- Current General Plan horizon is 2025 and was adopted in 2008 and updated in 2012
- City initiated the update internally in 2020, bringing on a consultant team in 2021
- The City is concurrently developing a Climate Action Plan, the “Blueprint for Carbon Neutrality”



# General Plan Update Roadmap



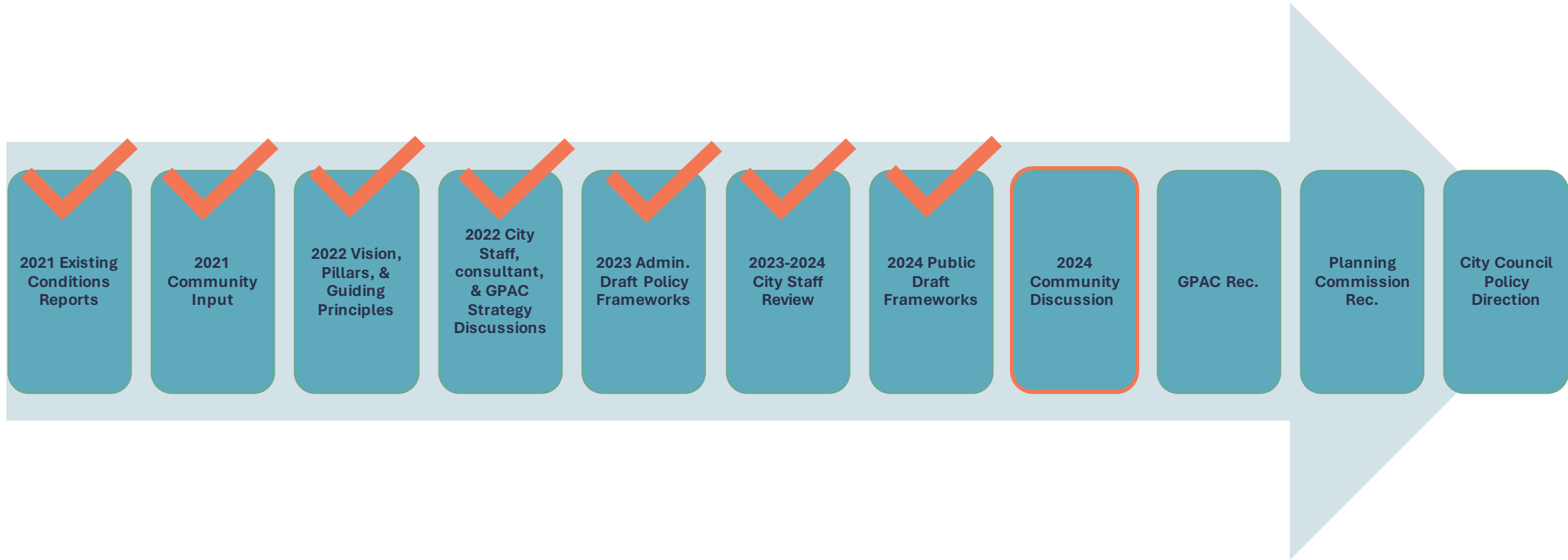
# Policy Framework Purpose & Structure

- **Purpose of the Frameworks:** Outline the proposed General Plan goals, policies, and implementation actions
- **Goals:** A general statement that expresses the outcomes towards which planning efforts are directed; often a topic-specific component of the Vision
- **Policies:** A statement of intent or direction that contributes toward achieving a goal and that guides decision-making
- **Actions:** A specific activity, procedure, program, or project aimed at implementing a policy

## Example

- Goal FAC-1: High-Quality Public Facilities
  - Policy FAC-1.1: Update, expand, relocate, or replace public facilities
    - Action FAC-1.1.3: Plan, design, and construct a new centrally located Fire Station and Emergency Operations Center, to include shared meeting spaces and flex space for other public uses.

# Policy Framework Evolution



# Policy Frameworks

ARTS, CREATIVITY, AND  
CULTURE



PARKS



HISTORIC RESOURCES



ENVIRONMENTAL JUSTICE



SAFETY



ECONOMIC DEVELOPMENT



INFRASTRUCTURE AND  
UTILITIES



MOBILITY AND  
TRANSPORTATION



NATURAL ENVIRONMENT



FLOOD RESILIENCE



PUBLIC FACILITIES



NOISE



GOVERNANCE AND  
IMPLEMENTATION



LAND USE



View the  
Frameworks  
[planpetaluma.org](http://planpetaluma.org)



# The General Plan will be different...

- Compelling, holistic, integrated, strategic approach
- Different organization
  - By element
  - By themes
  - By City department
- Digital General Plan: <https://shapessf.com/> example
- Implementation Plan
  - Action matrix: action, implementor, priority, timeframe
  - Roles for City, community, State, etc.
- Tracking progress (see the Implementation & Governance framework)
  - Track Implementation Plan progress
  - Monitor Performance Metrics Dashboard

# How to Provide Input

# Framework Review Form

In light of the Vision, Pillars, and Guiding Principles prepared by the GPAC and adopted by the City Council (<https://www.planpetaluma.org/documents#gpuvision>):

What are the most important policies in this framework? We recommend identifying the top 5 (or fewer) policies and ranking them in order of importance.

| Policy | Explanation |
|--------|-------------|
|        |             |
|        |             |

What concerns do you have about the policies in this framework? For example, are they unclear? Should they be softened or strengthened? Do you disagree with the policy direction?

| Policy | Explanation |
|--------|-------------|
|        |             |
|        |             |

# Policy Framework Community Meetings

| CCB   | Meeting Date                             | Key Frameworks to be Reviewed  |
|---|--|--|
| Bike + Ped (PBAC)<br>Transit                | May 1, 2024                              | Transportation   |
| Airport                                     | May 2, 2024                              | Transportation   |
| Historic & Cultural (HCPC)                  | May 7, 2024                              | Historic Resources   |
| Climate Action Commission (CAC)             | May 9, 2024                              | Transportation, Flood Resilience, Natural Environment  |
| Senior                                      | May 9, 2024                              | Environmental Justice  |
| PlanFest – Public Event                     | May 11, 2024                             | All!   |
| Recreation, Music, & Parks<br>Tree Advisory | May 15, 2024                             | Parks, Natural Environment, Public Facilities  |
| Public Art                                  | May 23, 2024                             | Arts, Creativity, and Culture  |
| Planning Commission                         | May 28, 2024<br>(June 25, July 23, etc.) | Natural Environment, Transportation, Parks, Flood Resilience, Economic Development, Infrastructure and Utilities, Environmental Justice, Noise, Land Use |
| GPAC  | June 20, 2024                            | Working Group recommendations on all Frameworks  |

# Providing Feedback

## Project Website

- Organized by Policy Framework topic
- Links to complete Policy Framework documents
- Embedded Online Feedback Form

Review other Policy Frameworks and provide feedback:

<https://www.planpetaluma.org/policy-frameworks>



PLAN DOCUMENTSGET INVOLVED!GPACSUBSCRIBE



### GENERAL PLAN UPDATE POLICY FRAMEWORKS

The Policy Frameworks for the General Plan Update are now available for review! These frameworks were created through an extensive process using the Vision, Pillars, and Guiding Principles developed by the General Plan Advisory Committee, analysis of the existing conditions, existing plans, and the needs of the community. The General Plan Team identified the need for 14 Policy Frameworks, which can be viewed by clicking on the links in the sections below.

These policies, pulled together into topic-based "Policy Frameworks", are detailed documents that cover much of what it means to be a City - from shorter-term facilities maintenance and infrastructure needs to long-term planning for things like future climate risks, business development, and historic preservation. The frameworks ask fundamental questions about what local government can do to improve the lives of our residents. They outline the ways Petaluma can bring these improvements to life over the next 20+ years. In the draft General Plan, some of these frameworks may be combined or reorganized as they are formed into the General Plan elements.

Please note: the Land Use and Flood Resiliency Frameworks are not yet available (see below for more details). As there is a lot of content in the frameworks below, we are releasing them now to give members of the public ample time to review. Additionally, the Housing Element update was completed, adopted, and certified in 2023. [Click here to see the Final Housing Element.](#)

We are looking forward to receiving feedback from the public beginning on May 4, 2024. Please [join our mailing list](#) to be kept up to date on the public comment period, meetings, and events.

### FRAMEWORKS



#### ARTS, CULTURE, AND CREATIVITY

Petaluma has a strong creative community and would like to expand access to art and creative industries for everyone. The Arts, Culture, and Creativity framework lays out plans to do this by strengthening our city's arts and culture programs, helping creative businesses thrive, and increasing the presence and visibility of artists in city projects and processes.

[To read the Arts, Culture, & Creativity framework, click HERE.](#)



#### ECONOMIC DEVELOPMENT

Petaluma wants its economy to provide opportunities for all community members to support themselves and reach their financial goals. Our city is also prioritizing having the funds needed to provide the services and infrastructure our community desires. This framework helps fulfill these aims by finding ways to make space for a variety of industries, attracting visitors, and providing transportation options.

[To read the Economic Development framework, click HERE.](#)





# Providing Feedback

## Online Feedback Form for each Framework

- Provide goal- and policy-specific feedback
- Provide general feedback



Review other Policy Frameworks and provide feedback:  
<https://www.planpetaluma.org/policy-frameworks>

# General Plan Festival on May 11, 2024

- Open House
- From 9:00 am – 2:00 pm at the Petaluma Fairgrounds (Beverly Wilson Hall)
- Learn about the frameworks
- Engage in informal discussion with Consultants and City staff
- Provide Feedback
- Tacos, artwork, & prizes!



# Health, Equity & Environmental Justice

# Environmental Justice Element

- The Environmental Justice Element is a new General Plan element to comply with recent state law (the Planning for Healthy Communities Act).
- Requires identification of “disadvantaged communities” (DACs), which are low-income areas with high pollution and health burden
- Must minimally address five topic areas (see list to the right)
- Requires outreach and engagement with identified DAC’s
- Requires goals, policies, and actions that address health, equity, and environmental justice priorities in DACs

**Reduce Pollution Exposure:** air quality, water quality, soil quality, and land use compatibility

**Promote Food Access:** grocery stores, farmers’ markets, community gardens, etc.

**Promote Physical Activity:** walkable and bikeable communities, access to transit, safety

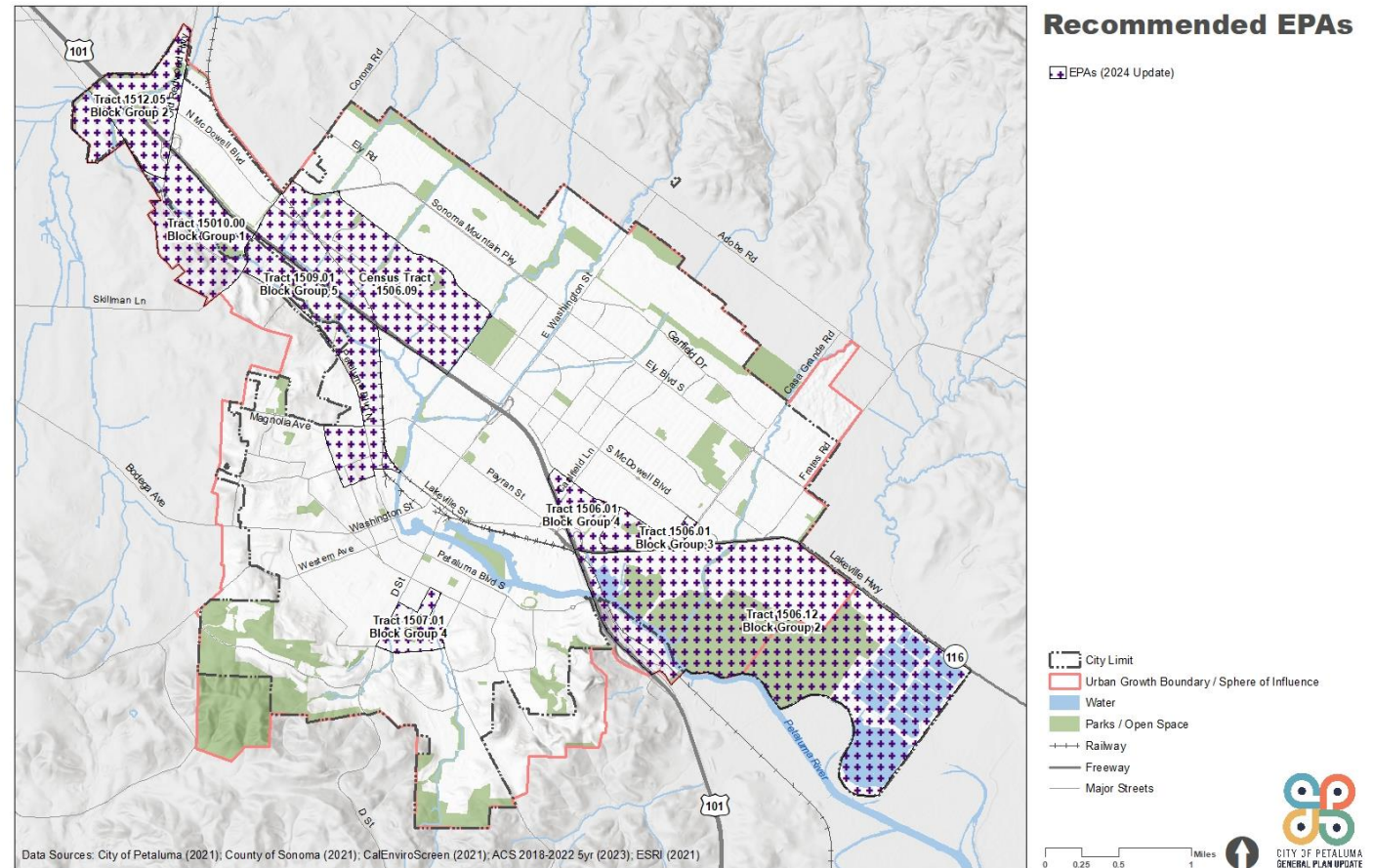
**Promote Public Facilities:** parks, schools, health facilities, etc.

**Promote Safe and Sanitary Homes:** housing location, quality, and affordability

# Foundations: Existing Conditions

## Petaluma must address environmental justice.

- The City of Petaluma refers to DACs as “Equity Priority Areas” (EPAs) in order to center equity and equitable investments as part of the General Plan process.
- Multiple areas in the city are considered Equity Priority Areas
- Pollution and health burdens are primarily related to transportation:
  - Highway-related air pollution
  - Low access to transit
  - High diesel particulate matter





# Foundations: Community Priorities

## Vision

- **We are caring and connected.** We celebrate our differences by providing inclusive community spaces for the diverse people that form Petaluma and by cultivating a sense of belonging. We welcome newcomers seeking refuge, a place to call home, and new opportunity. Our engaged residents and local government ensure equity, livability, opportunity, and access for all residents. We embrace each other's cultures, lift each other up, and move forward together.
- **We invest in each other.** We are a community where children and youth thrive, families in all forms are supported, and our elders flourish as they age in place. We provide plentiful and varied housing choices, convenient access to healthy local food, and an educational system that builds leaders. We support all residents with accessible city services.
- **We relish our spirited, distinctive neighborhoods where we live, work, and play.** We enjoy active, animated communities throughout our city along with an energetic historic downtown. Our friendly, beautiful, and nature-filled streets, parks, urban forest, and accessible river, bike lanes and trails, and walking paths connect people and help keep residents healthy. It is safe, easy, and enjoyable to travel across and around town and to neighboring communities with human, electric, and hybrid transport.
- **We are forward-thinking leaders.** By achieving carbon neutrality in 2030, we demonstrate that equitable, carbon-neutral, regenerative communities and economies are possible through action and collaboration with other cities, communities, and our region. We have adapted to climate change with a community-driven, whole systems, and nature-based approach to development.

# Foundations: Community Priorities

## Pillars

- **Equity, Justice and Demographic Changes.** Current demographic trends indicate that Petaluma will have an older, more diverse population well into the future. Petaluma commits to advancing social and economic justice to create an inclusive and equitable city in which all can thrive. The General Plan must prioritize supporting those who have been most affected by injustice and inequity and advances bold action in terms of housing, transportation, public spaces and intergenerational and multi-cultural programs in order to take advantage of opportunities and meet challenges as they arise.
- **Participatory Decision-Making and Government Transparency.** Success in these endeavors will depend on an engaged community that participates in decision making and a government that is open and transparent. The General Plan must reflect the perspectives of Petaluma's diverse population, ensuring that opportunities to engage in public dialogue are accessible to all and setting the stage to address and solve future challenges with integrity, creativity and collaboration.

## Guiding Principles

4. Promote social and economic justice to address structural social and economic inequities and racism.
5. Ensure the health and wellness of all residents.
6. Physically and psychologically integrate and connect the East and West sides of town.
7. Create a welcoming, affordable, accessible, and age- and family-friendly city.
12. Prioritize cycling, walking, transit, and other transportation alternatives over automobiles.

# Health and Environmental Justice Goals

Goal HEEJ-1:  
Public Health

Goal HEEJ-2:  
Leader in Equity

Goal HEEJ-3:  
Pollution  
Reduction

Goal HEEJ-4:  
Equitable Access  
to Services +  
Facilities

Goal HEEJ-5:  
Access to  
Healthy Food

Goal HEEJ-6:  
Safe and  
Sanitary Housing

Goal HEEJ-7:  
Physical Activity

Goal HEEJ-8:  
Engaged  
Community

Goal HEEJ-9:  
Age Friendly

# Goal HEEJ-1: Public Health

- Policy HEEJ-1.1: Advance Health in All Policies
- Policy HEEJ-1.2: Promote Health Services and Programs
- Policy HEEJ-1.3: Advance Regional Health Equity Priorities
- Policy HEEJ-1.4: Support the Healthcare System
- Policy HEEJ-1.5: Limit Firearms and Cannabis Sales

## **Goal HEEJ-2: Leader in Equity**

- Policy HEEJ-2.1: Advance Equity in City Administration
- Policy HEEJ-2.2: Enhance Language Access
- Policy HEEJ-2.3: Distribute Resources Equitably

## **Goal HEEJ-3: Pollution Reduction**

- Policy HEEJ-3.1: Minimize Air Pollution
- Policy HEEJ-3.2: Reduce Vehicle-Related Pollution
- Policy HEEJ-3.3: Expand the Tree Canopy



## **Goal HEEJ-4: Equitable Access to Services + Facilities**

- Policy HEEJ-4.1: Support Climate Adaptation
- Policy HEEJ-4.2: Expand Transit Services
- Policy HEEJ-4.3: Improve Community Safety
- Policy HEEJ-4.4: Support Reentry Services

## **Goal HEEJ-5: Access to Healthy Food**

- Policy HEEJ-5.1: Strengthen the Local Food Economy
- Policy HEEJ-5.2: Reduce Food Insecurity
- Policy HEEJ-5.3: Promote Good Nutrition

## **Goal HEEJ-6: Safe and Sanitary Housing**

- Policy HEEJ-6.1: Improve Housing Quality
- Policy HEEJ-6.2: Reduce Homelessness
- Policy HEEJ-6.3: Increase Housing Resilience

## **Goal HEEJ-7: Physical Activity**

- Policy HEEJ-7.1: Promote Active Transportation
- Policy HEEJ-7.2: Improve Safe Routes to School

## **Goal HEEJ-8: Engaged Community**

- Policy HEEJ-8.1: Enhance Equitable Engagement Practices
- Policy HEEJ-8.2: Advance Youth Civic Engagement
- Policy HEEJ-8.3: Foster Board and Commission Leadership

## **Goal HEEJ-9: Age Friendly**

- Policy HEEJ-9.1: Support Safe Aging in Place
- Policy HEEJ-9.2: Support Social Services for Older Adults
- Policy HEEJ-9.3: Provide Education and Training

# Questions & Comments

# What feedback to you have?

## Considering your technical expertise...

- What are the **most important** policies in this framework?
  - We recommend identifying the top 5 (or fewer) policies and ranking them in order of importance.
- What **concerns** do you have about the policies in this framework?
  - For example, are they unclear? Should they be softened or strengthened? Do you disagree with the policy direction?
- Other than the Equity Priority Areas identified, are there additional low-income areas that are disproportionately affected by environmental pollution and other hazards that can lead to negative health effects, exposure, or environmental degradation?
- Does the framework address the challenges residents face in reducing their exposure to pollution and accessing health, social, and other services through the City?



A photograph of a street corner in Petaluma, California. The scene is dominated by historic, multi-story buildings. On the right, a prominent red brick building with white architectural details and arched windows houses 'PRODIGY HAIRDRESSING'. To its left, a blue building with similar architectural style is visible. Further back, a building with a clock tower can be seen. The street is lined with parked cars, and a traffic light is visible. A large, white, bold text overlay 'Thank you!' is centered across the middle of the image.

# Thank you!