



ReLeaf Petaluma

SIX PARKS 2

Fall & Winter 2023-24

Funder - Cal Fire & California ReLeaf

\$62,000 grant for trees in 5 parks and 4 schools



Introducing the Plan for Six Parks 2 Trees

Proposed Parks	Planting Dates	Trees to be Planted
Grant	Oct 21	8 trees
Anna's Meadow	Dec 2	3 trees
La Tercera	Dec 2	14 trees
Turnbridge	Dec 2	17 trees
Fox Hollow	Dec 16	53 trees
Total		95 trees

Native Tree Species and Quantities

Alder, White	6
California Buckeye	10
Coast Redwood	8
Northern California Black Walnut	6
Oaks (Valley)	5
Oaks (Black)	6
Oaks (Coast Live)	26
Oaks (Blue)	20
Western Sycamore	8
Total Trees	95

Partners



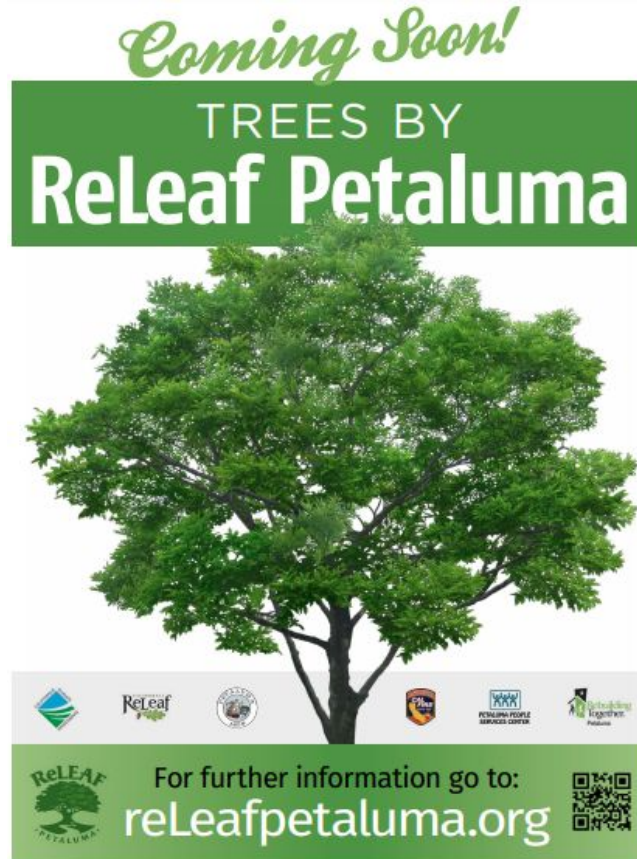
**PETALUMA PEOPLE
SERVICES CENTER**

Community Outreach Completed

- “Coming Soon” sandwich signs in Parks
- Weekend Tabling in each Park to engage Park users and show plans
- Community Input Zoom on October 9th, 6:30 PM, with slide presentation, Q&A, and discussion
- Leafleting of homes immediately surrounding each Park
- Flyers on bulletin boards at library, schools, and stores near Parks



ReLeaf Sandwich Board Signs for Each Park



Example of Interpretive Signs for Each Park

GLENBROOK PARK - OCTOBER 2022 | 61 NEW NATIVE TREES PLANTED

Planting Native Trees for Biodiversity

Biodiversity is essential for the systems that support life on Earth. It is all the different kinds of living organisms that exist in one area. ReLeaf Petaluma aims to increase the health of the ecosystem that we call Petaluma. We see a community in which biodiversity is admired and where trees are respected for the benefits they provide to all of the planet's life cycle.



SIERRAN TREEFROG *Pseudacris sierra*
During the winter these vocal frogs are reliant on hibernating within the woody habitat of a forest floor. After hibernation they find water to lay their eggs and then immediately return to the safety of tree habitat. This species was previously known as the Pacific chorus frog.



MONARCH BUTTERFLY *Danaus plexippus*
While overwintering these delicate flyers roost in trees. Even though milkweed serves as an exclusive host plant for monarch larvae, the nectar of a wide variety of forest understory and grassland plants provide crucial food sources for adult monarchs. Damp soil in the shade of trees provide monarchs with moisture and minerals as they migrate.



WESTERN BLUEBIRD *Sialia mexicana*
Tree cavities serve as nesting sites for these active and colorful birds. Tree habitat also provides necessary perching locations while hunting for insects among the canopy and surrounding grasslands.



Blue Oak
Quercus douglasii



Valley Oak
Quercus lobata



Big-leaf maple
Acer macrophyllum



Coast Live Oak
Quercus agrifolia



Western Sycamore
Alnus incana



California Redwoods
Sequoia sempervirens



releafpetaluma.org

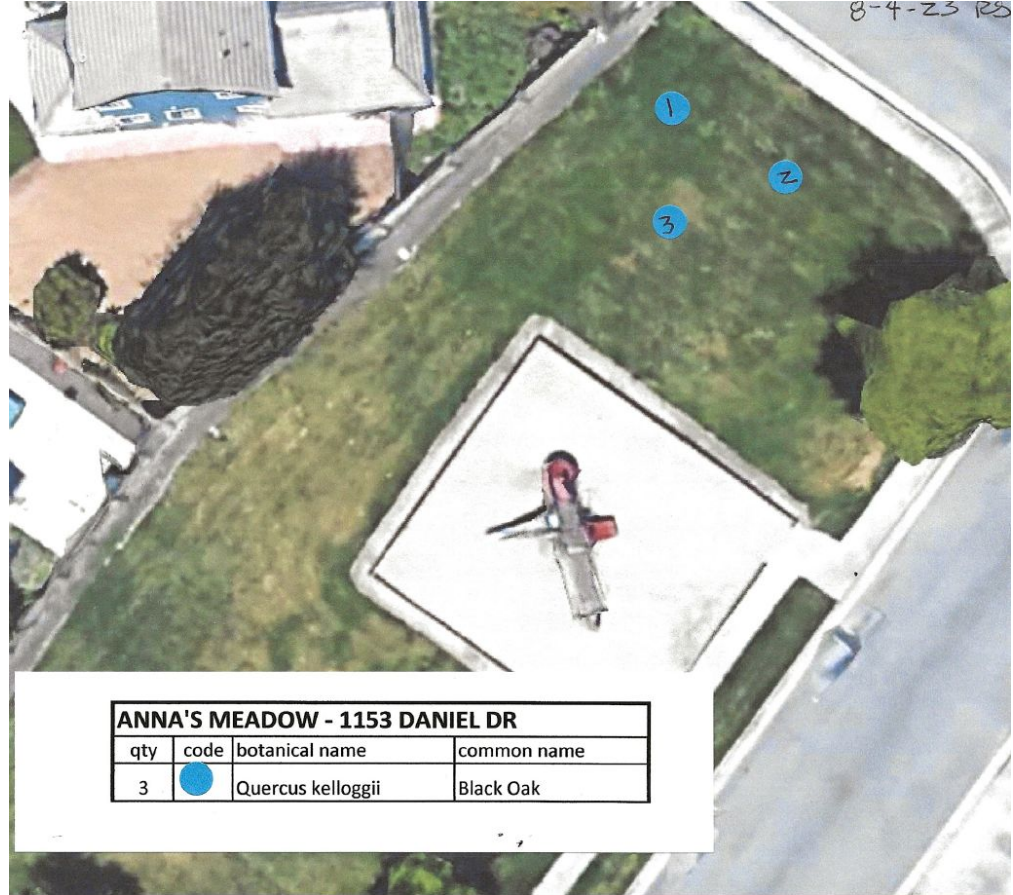


People of all ages can engage in tree planting, and through this activity build a strong connection with nature and with their community.



Funding for this California Climate Investments Grant Project has been provided through California ReLeaf from the Greenhouse Gas Reduction Fund administered by the California Department of Forestry and Fire Protection (CAL FIRE) Urban and Community Forestry Program.

Placement Map - Anna's Meadow



ANNA'S MEADOW - 1153 DANIEL DR

qty	code	botanical name	common name
3		<i>Quercus kelloggii</i>	Black Oak

Placement Map - Grant Park

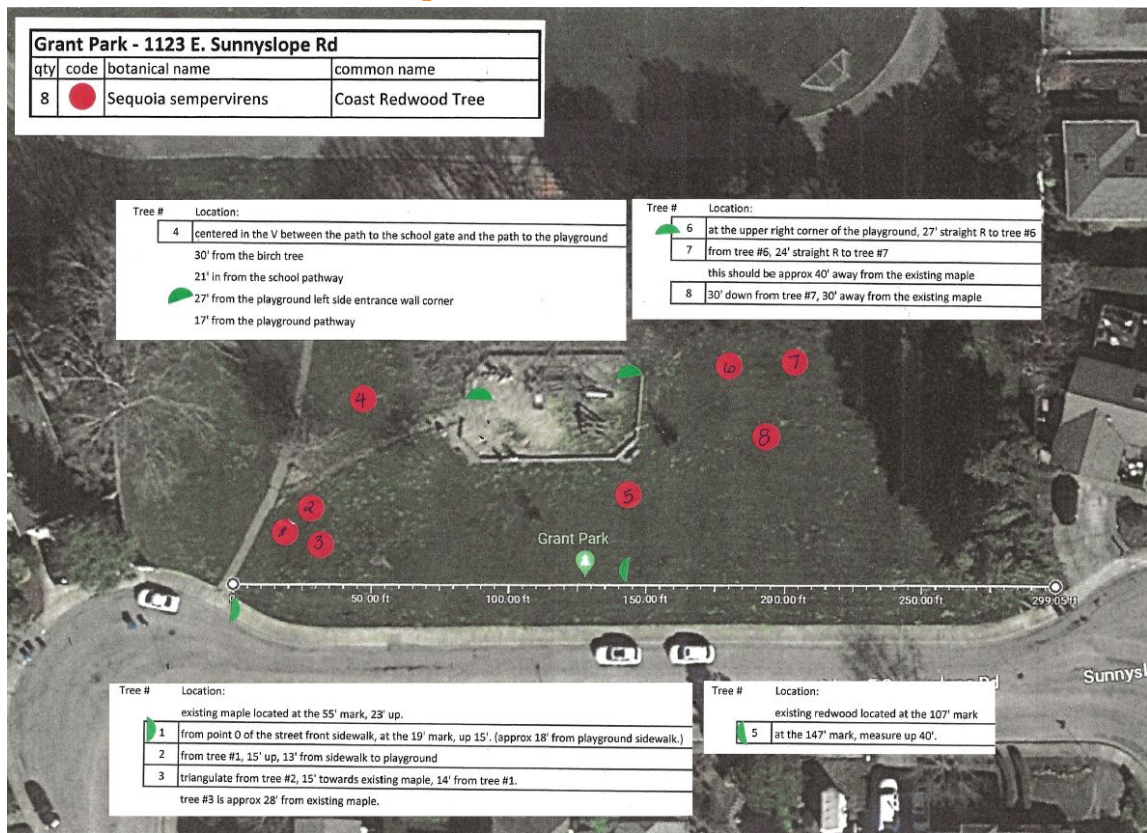


Photo by Michael Moore

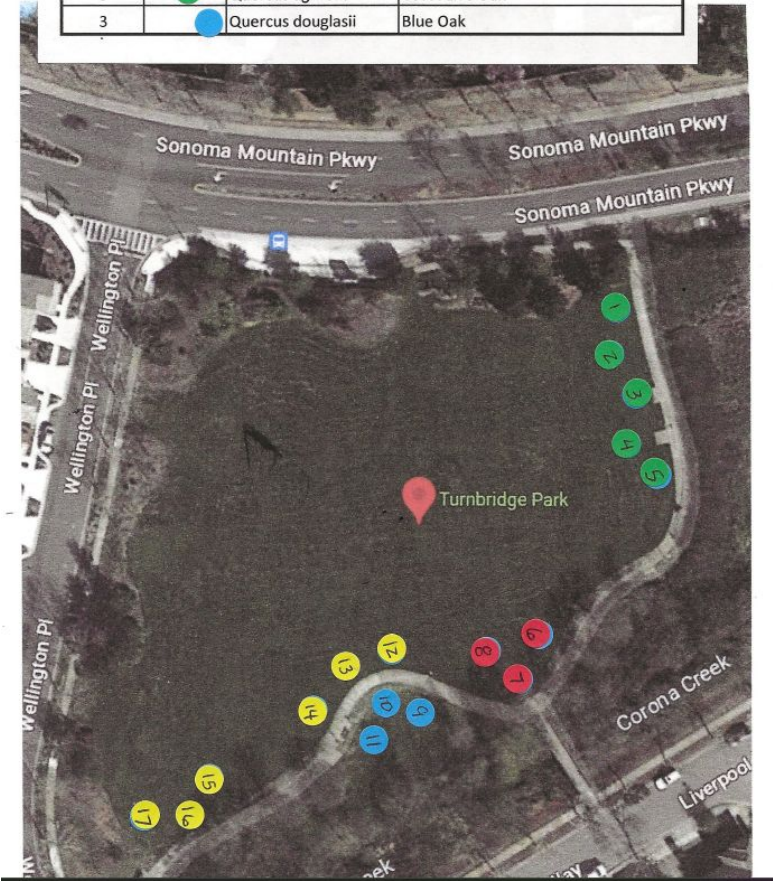
Placement Map - La Tercera Park



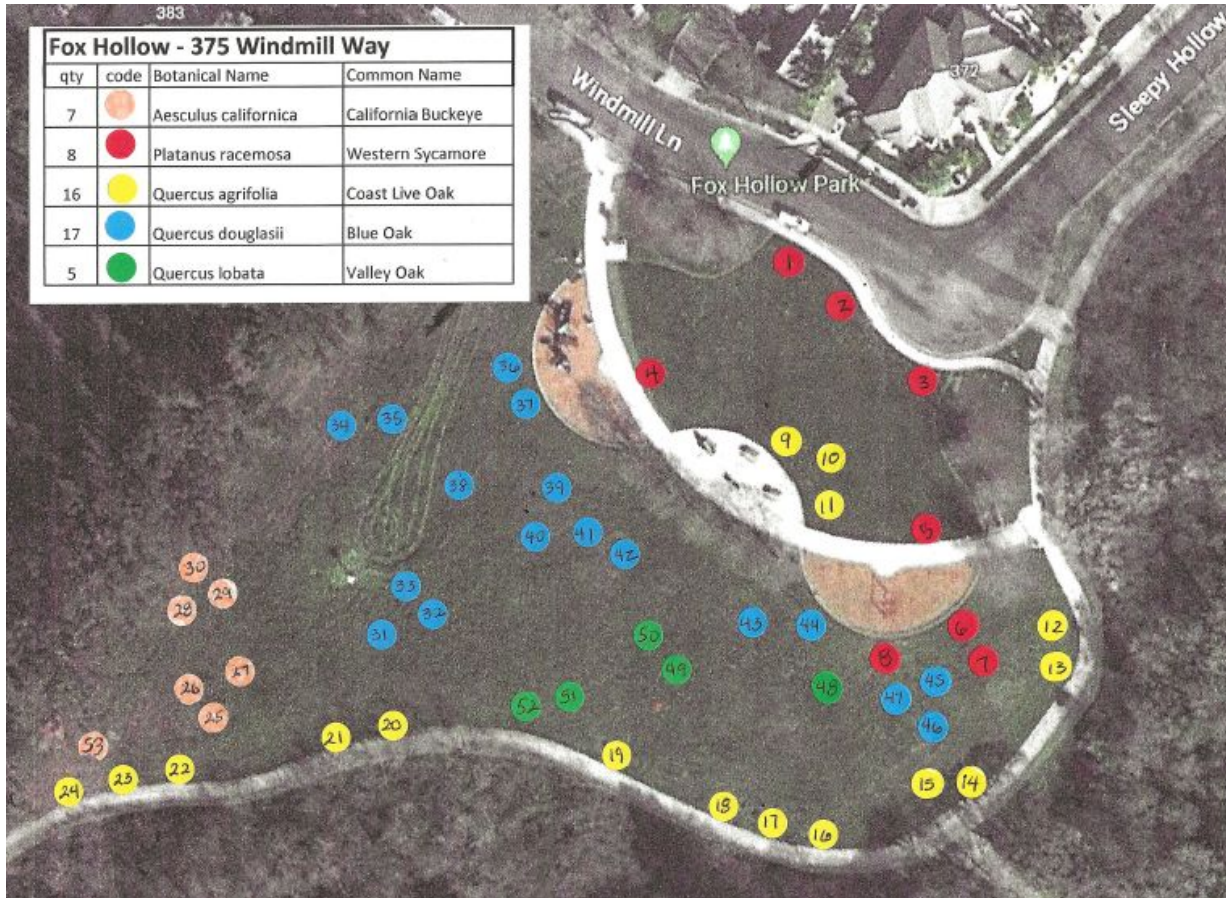
Placement Map - Turnbridge Park



Turnbridge Park - 1407 Liverpool Way			
qty	code	Botanical Name	Common Name
3	1	Aesculus californica	Buckeye
6	2	Juglans Hindsii	Northern California Black Walnut
5	3	Quercus agrifolia	Coast Live Oak
3	4	Quercus douglasii	Blue Oak



Placement Map - Fox Hollow Park



Thank You!

We look forward to working together again to make Petaluma a “COOL” hometown in every sense of the word, and hope to see you at the Parks, December 2nd, and December 16th!



Photos by Sherri Oster Photography

