

Land Resilience Partnership At Petaluma City Parks

Jess Gallagher & Liz Platte-Bermeo - Daily Acts

November 15, 2023



Daily Acts



Mission

Inspire transformative action that creates connected, equitable, and climate-resilient communities.

Values & Principles

Ripples | *Be the Change*
Reverence | *Start with Your Heart*
Relations | *Nurture Community*
Resilience | *Persevere with Joy*



Agenda

- Overview of Land Resilience Partnership
- Program Goals
- Partnerships
- Project Components
- Proposed Park Projects
- Design Considerations and Maintenance
- Q & A



Land Resilience Partnership (LRP)

A program that connects local community to solutions that build climate resilience through design and installation support.

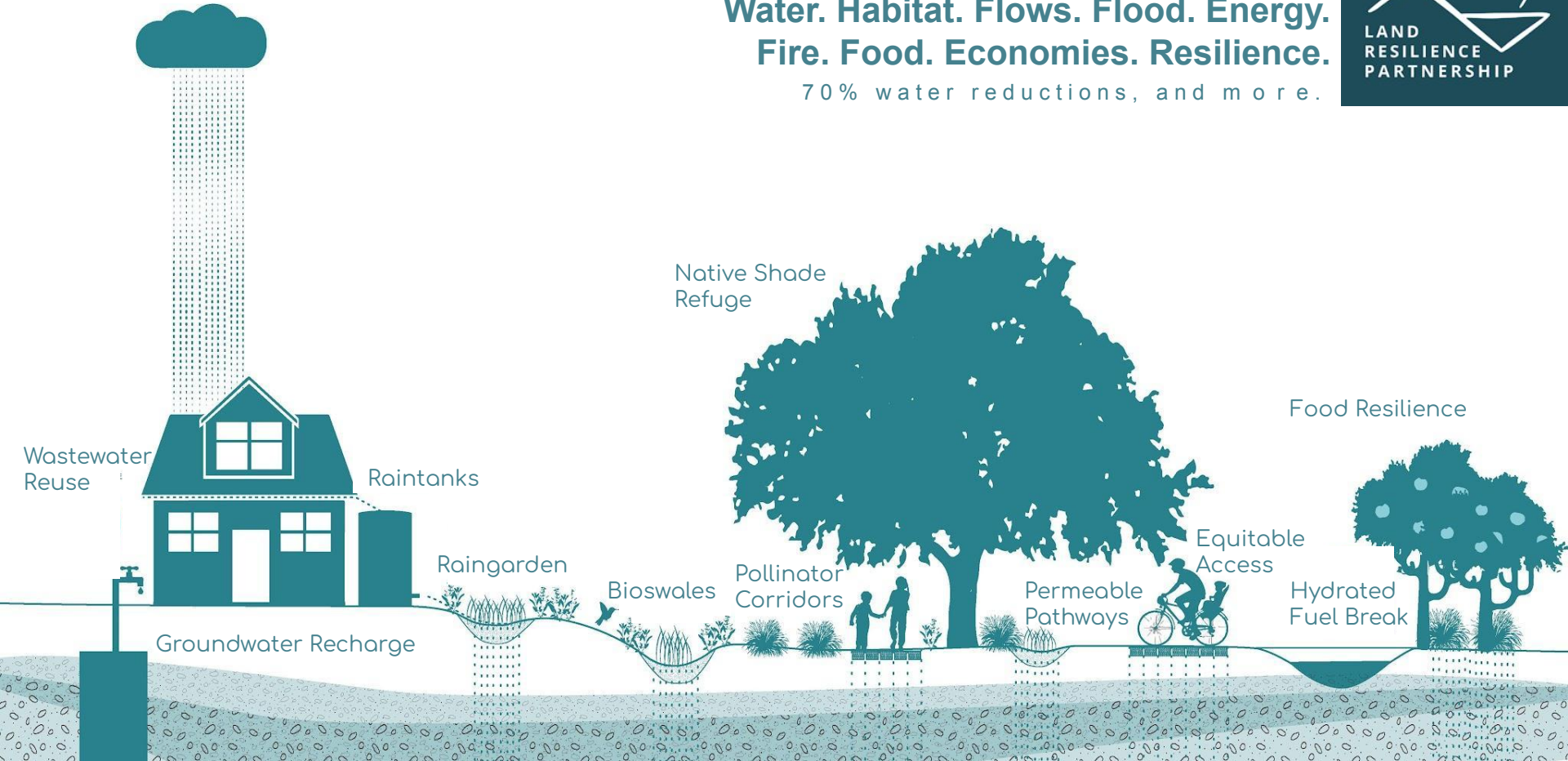
- Funded by CA Department of Water Resources Urban Multi-Benefit Drought Relief Disadvantaged Communities Grant program
- Goals:
 - 150 residential site assessments;
 - 70 residential installs;
 - 5 public parks; and
 - 4 school installs
- Priority Area - East side Petaluma
- Timeframe - all projects completed by December 2025



LOCAL SOLUTIONS.

Water. Habitat. Flows. Flood. Energy.
Fire. Food. Economies. Resilience.

70% water reductions, and more.



Partnerships



LRP at Petaluma City Parks

- Miwok Park - Spring 2024
- La Tercera Park - Fall 2024
- McDowell Park - Spring 2025
- Lucchesi Park - TBD
- Sunrise Park - TBD

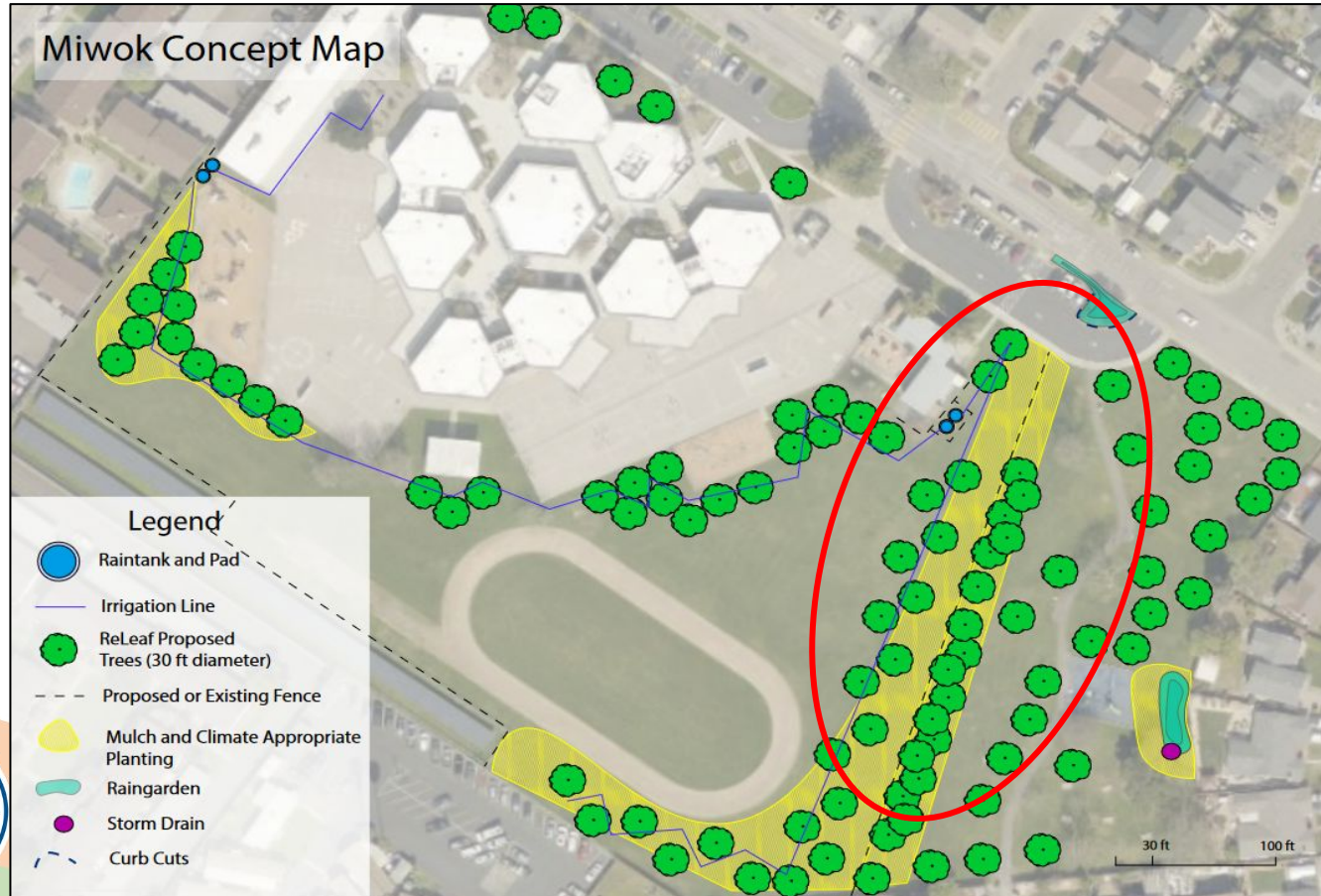


Project Components

- Sheet Mulching
- Climate Appropriate Planting
- Rain Gardens and Swales
- Rain Tanks
- Irrigation Efficiencies



Miwok Park



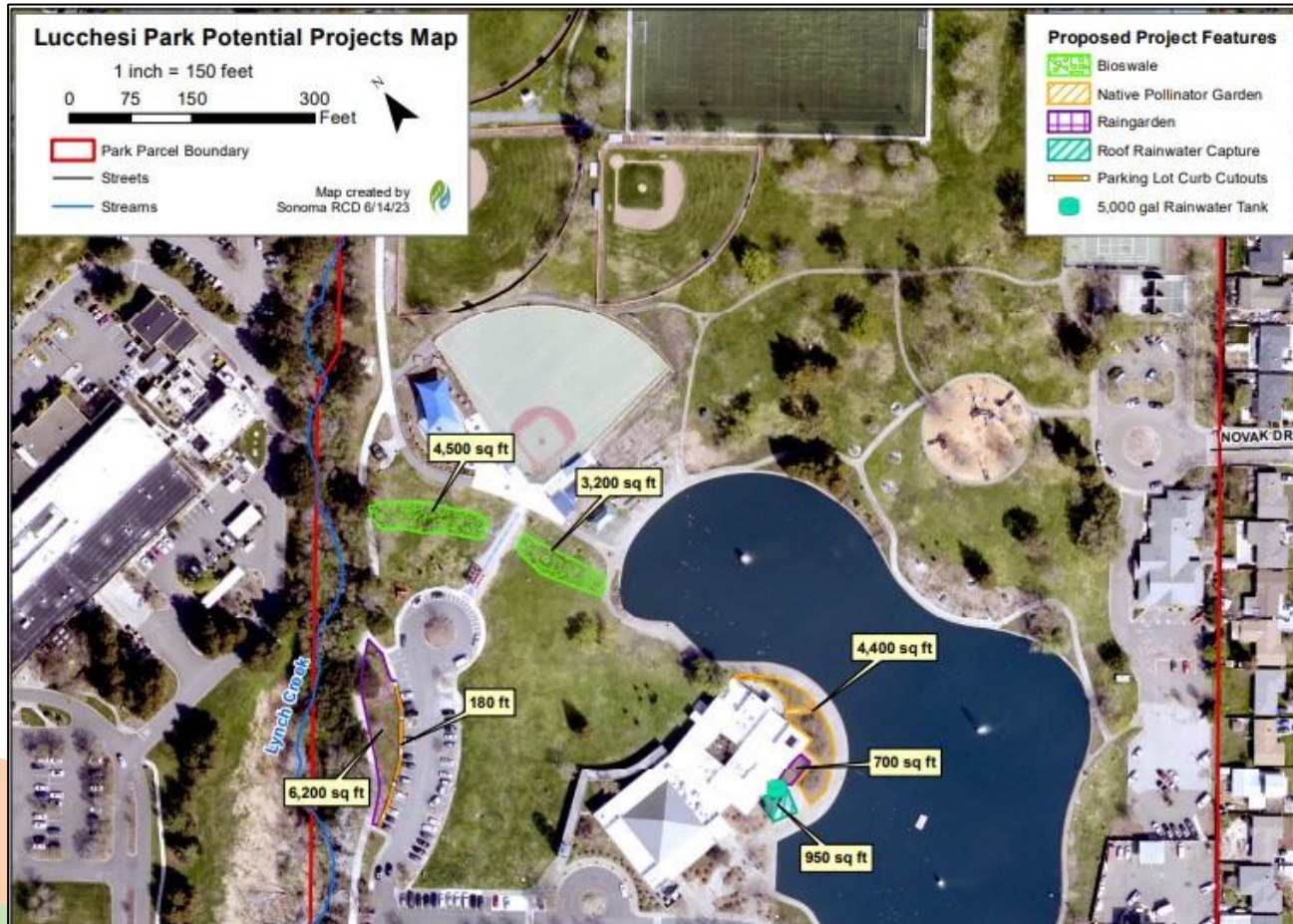
La Tercera



McDowell Park



Lucchesi Park



Sunrise Park

Sunrise Parkway Potential Projects Map

1 inch = 100 feet
0 50 100 200 Feet

— Streets

— Streams

▭ Sunrise Parkway Boundary

Map created by
Sonoma RCD 8/22/23

Proposed Project Features

Native Pollinator Garden (24,560 sq ft total)

Mow Strip Lining Plantings (4,250 sq ft total)

Foot Pathways (1,330 linear ft or 7,950 sq ft at 6 ft width)

Tree plantings proposed by ReLeaf (57 trees total)



Design Considerations

- Plant selection for low maintenance
- Plant density for weed suppression
- Concrete mow strip to maintain lawn edge
- Irrigation retrofits to increase efficiency
- Rain gardens and swales to reduce flooding



Maintenance Recommendations

- Sheet Mulch
 - Apply mulch every 2 years to reduce weeds and increase water holding capacity
- Climate Appropriate Plants
 - Focus on plants that require limited to no seasonal pruning
 - Allow any leaf litter to stay on landscape as mulch
- Rain Gardens
 - Clear debris from overflow ahead of rainy season
 - Ensure draining properly when raining
- Rain Tanks
 - Clean out first flush filtration system ahead of rainy season



Proposed Project Benefits

- Reduced Water Demand:
 - Lawn (1000 ft²) uses 34,000 Gallons/Year
 - Mulched Landscape (1000 ft²) with Native Plants uses 8,000 Gallons/Year
- Reduced greenhouse gas emissions from less maintenance with machinery
- Increased soil health, carbon sequestration and pollinator habitat with trees, plants and mulch
- Reduced runoff and pollution to our waterways through earthworks



Policy Trends for Native Landscaping

- AB 1573 Passed in CA State Assembly
 - California's first requirement for the inclusion of low-water native plants in public and commercial landscapes
 - 75% of landscape must be native plants by 2035
- Petaluma previous drought restrictions
 - Stage 4, reached in 2022 restricted irrigation to two days a week
 - Not all East side parks are on recycled water (which has reduced availability in times of drought)



Thank you!

**Jess Gallagher, Land Resilience Partnership
Program Manager**
jess@dailyacts.org

**Liz Platte-Bermeo, Climate Resilience
Program Manager**
Liz@dailyacts.org



Questions?

