



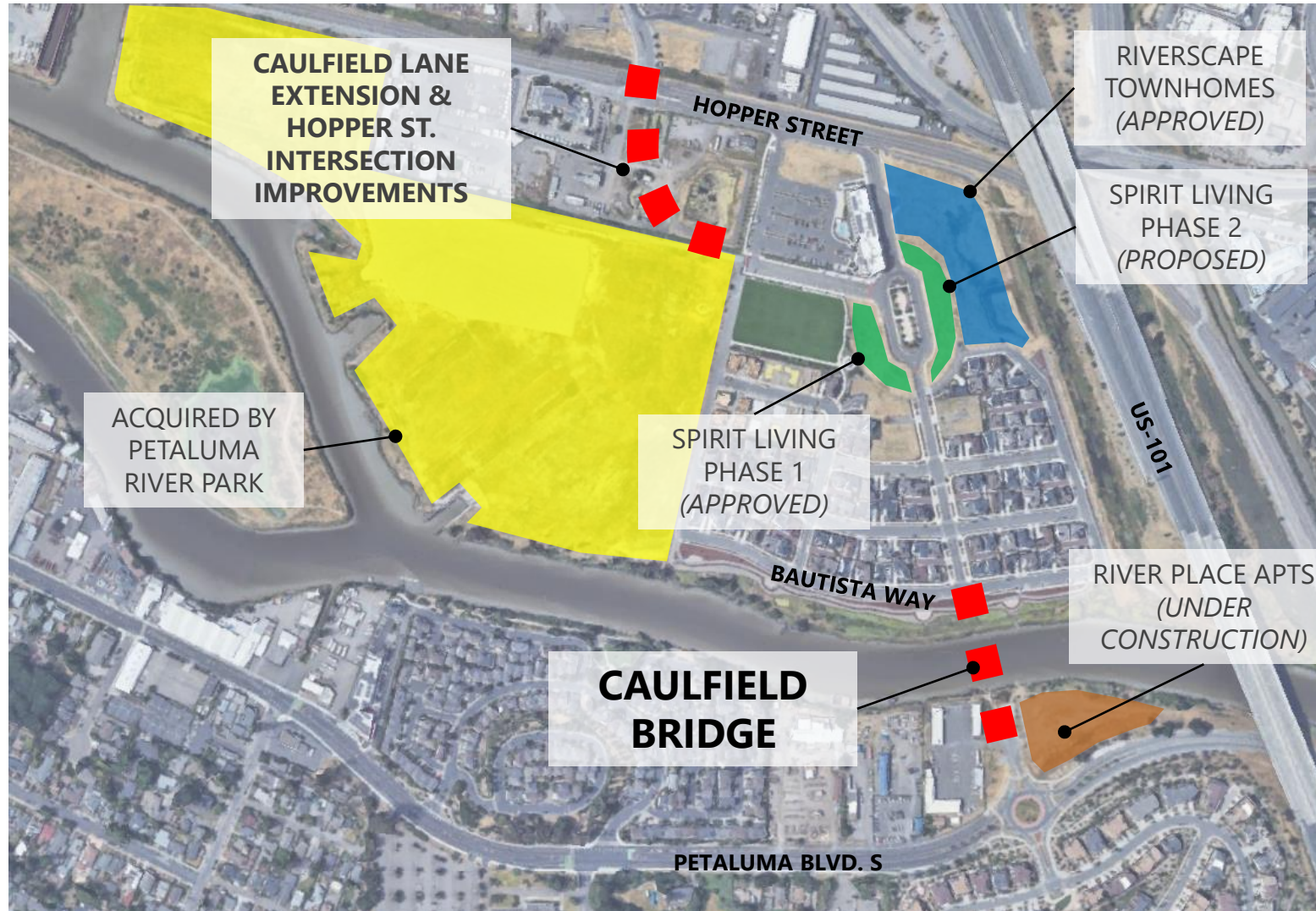
Caulfield Bridge Crosstown Connector Update

JUNE 17, 2024

Overview

- Project Background
- Scope, Schedule, & Budget
- What We've Heard
- Key Topics
 - Circulation & Roadway Improvements
 - Bridge Type & Design
 - Amenities
- Community Engagement Plan





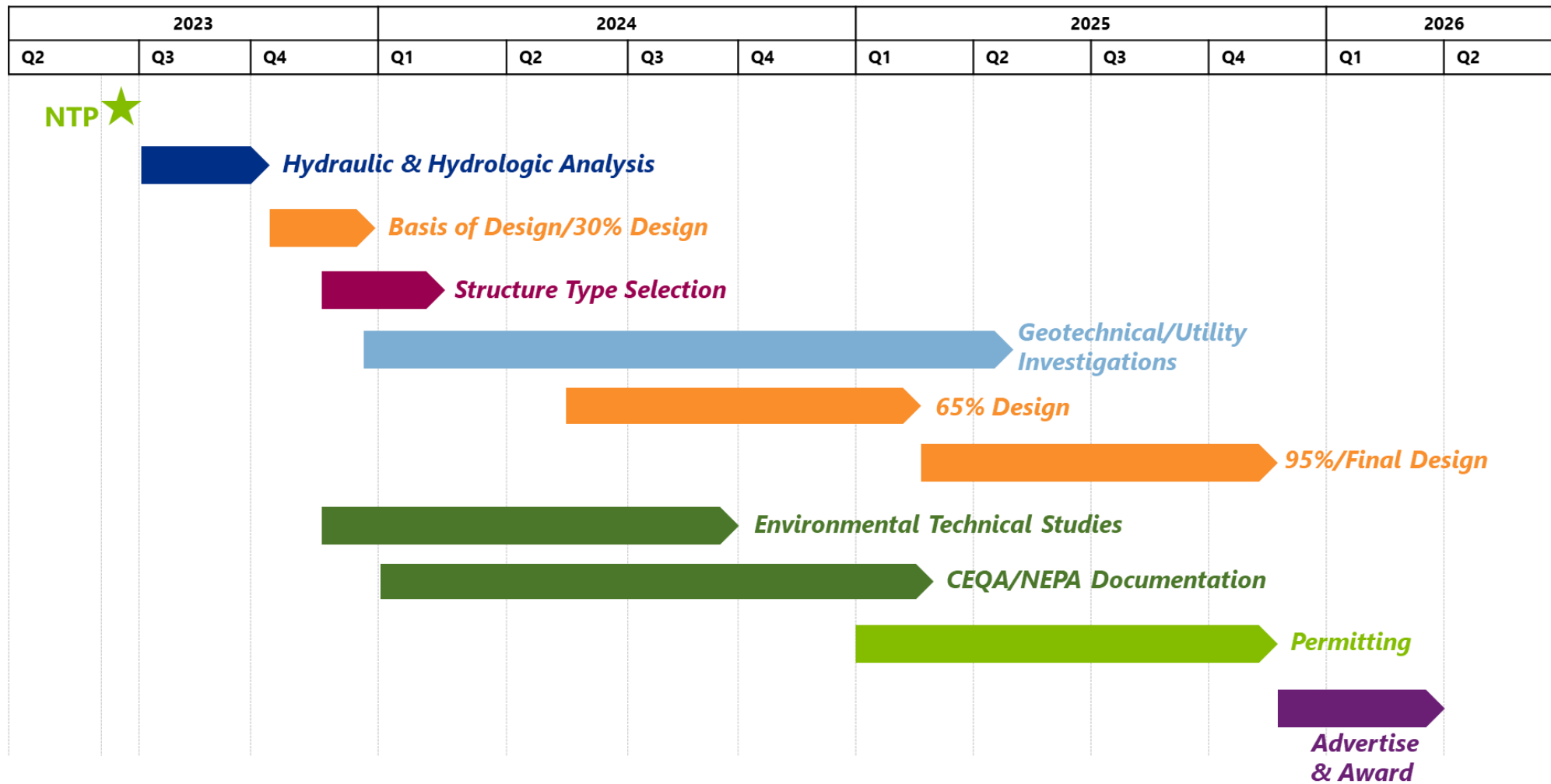
Background

- Identified as preferred “southern crossing” alignment and included in *General Plan 2025* (2008)
- Eligible for Traffic Impact Fees
- Anticipated in Riverfront Master Plan (2010)



Background

- Included in adopted Capital Improvement budgets since FY17/18
- Feasibility study completed 2021
- Crosstown Connector Workshop with City Council in October 2022
- Resolution No. 2023-070 N.C.S.: Proceed with design and permitting



Scope & Schedule

C16401824

USES (dollars in \$000)

Design/ Planning/ Environmental/ Land
Administration / Legal
Construction Contracts
Construction Mgmt
Contingency
CIP Overheads

TOTAL USES

| Actual Life to Date thru FY 23 | Estimate FY 23-24 | Estimate Life to Date thru FY 24 | Budget FY 24-25 | Projected Budgets | | | | Total Project Estimate |
|--------------------------------------|----------------------|--|--------------------|-------------------|------------------|-------------|-------------|------------------------------|
| | | | | FY 25-26 | FY 26-27 | FY 27-28 | FY 28-29 | |
| 398 | 3,334 | 3,732 | 3,334 | | | | | 7,066 |
| | 10 | 10 | 10 | 15 | 15 | | | 50 |
| | | - | | 17,028 | 39,732 | | | 56,760 |
| 18 | | 18 | | 1,703 | 3,973 | | | 5,694 |
| | | - | | 5,108 | 11,920 | | | 17,028 |
| 7 | 57 | 64 | 57 | 341 | 795 | | | 1,257 |
| \$ 423 | \$ 3,401 | \$ 3,824 | \$ 3,401 | \$ 24,195 | \$ 56,435 | \$ - | \$ - | \$ 87,855 |

SOURCES (dollars in \$000)

Traffic Mitigation Impact Fees
Developer Contributions
Undetermined ^A

TOTAL FUNDS

| | | | | | | | | |
|-----------------|-----------------|-----------------|-----------------|------------------|------------------|-------------|-------------|------------------|
| | 2,498 | 2,498 | 3,401 | 24,195 | 428 | | | 30,522 |
| 1,326 | | 1,326 | | | | | | 1,326 |
| | | - | | | 56,007 | | | 56,007 |
| \$ 1,326 | \$ 2,498 | \$ 3,824 | \$ 3,401 | \$ 24,195 | \$ 56,435 | \$ - | \$ - | \$ 87,855 |

^A Undetermined sources could utilize future Impact fees based on the Impact Fee Nexus study. Other sources such as future grants, fed/state programs or donations could also be utilized. As funding becomes available and is sufficient to cover project cost, funding Sources will be updated and identified.

Current Cost Estimates & Proposed FY24/25 Budget



CONCERNS ABOUT
INCREASED TRAFFIC &
SPEEDING IN RIVERFRONT
NEIGHBORHOOD



CONCERNS ABOUT VISUAL
IMPACTS IN RIVERFRONT
NEIGHBORHOOD



COORDINATE BRIDGE
OPERATIONS



INCORPORATE ART



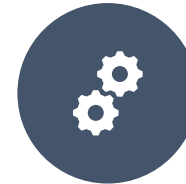
INCORPORATE RIVER
ACCESS



PROVIDE WIDE MULTI-USE
PATHWAYS SEPARATED
FROM TRAFFIC



PROVIDE CLEAR
SIGHTLINES & LIGHTING
ON & UNDER BRIDGE



PREFERENCE FOR RUSTIC
AESTHETIC SIMILAR TO D
STREET



MINIMIZE & MITIGATE
ENVIRONMENTAL IMPACTS

What We've Heard

Circulation & Roadway Improvements



Circulation & Roadway Improvements Initial Findings

Traffic model forecasts growth to 2040, including pending projects and *General Plan 2025* buildout estimates

Project will reduce citywide vehicle miles traveled

Most significant reduction in traffic expected on D Street drawbridge

No adverse impact to Level of Service except at Lakeville Hwy./Caulfield Ln.

Emergency response times reduced by up to 50%

New crosstown transit service planned



Circulation & Roadway Improvements

- 1) Modify Caulfield Ln./Lakeville Hwy. intersection
- 2) Install detection on Caulfield Lane north of SMART tracks to ensure cars don't queue onto tracks
- 3) Install signal or roundabout at Caulfield Ln./Hopper St. intersection (subject to California Public Utilities Commission approval)
- 4) Construct Caulfield Ln. extension

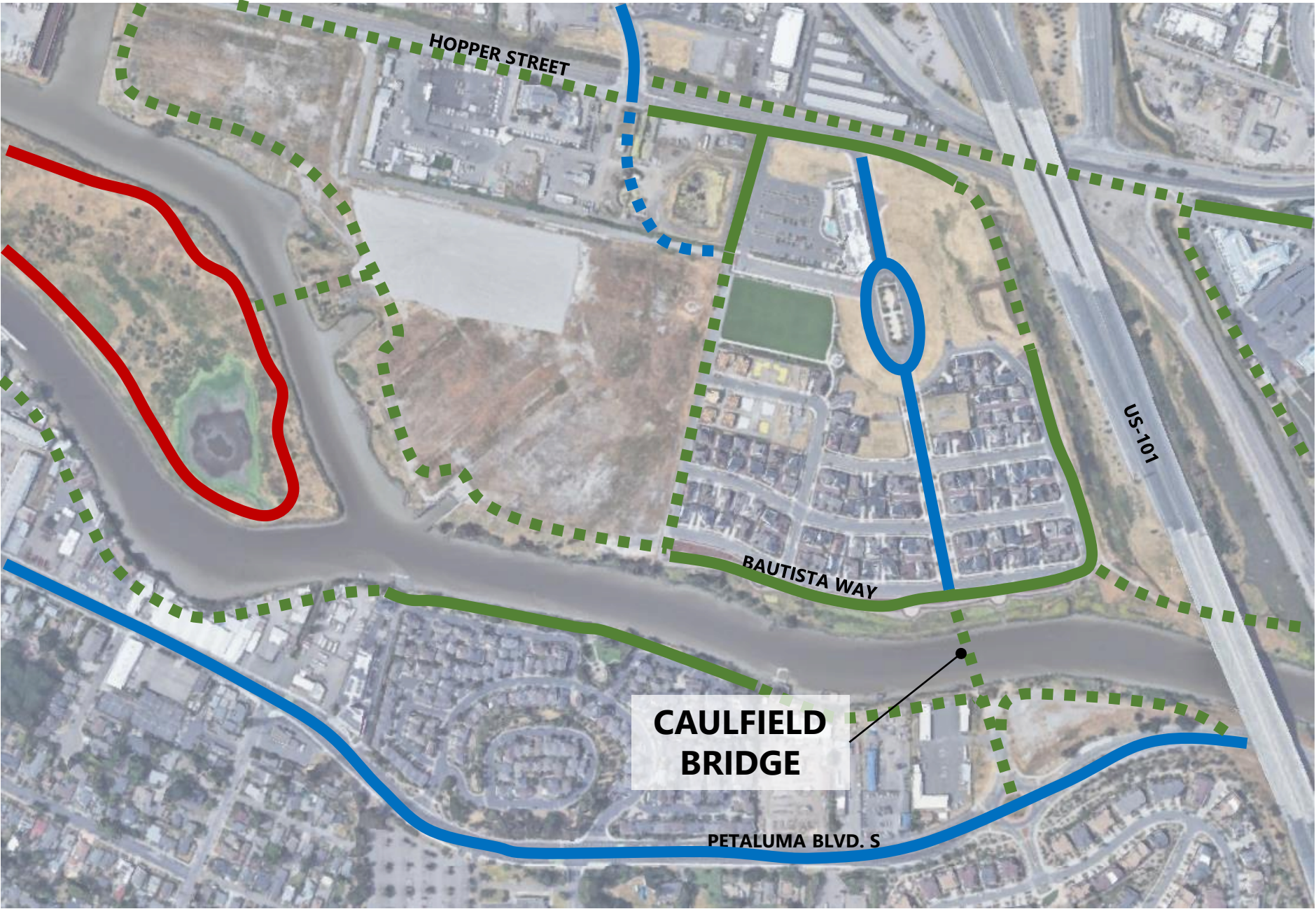


Circulation & Roadway Improvements

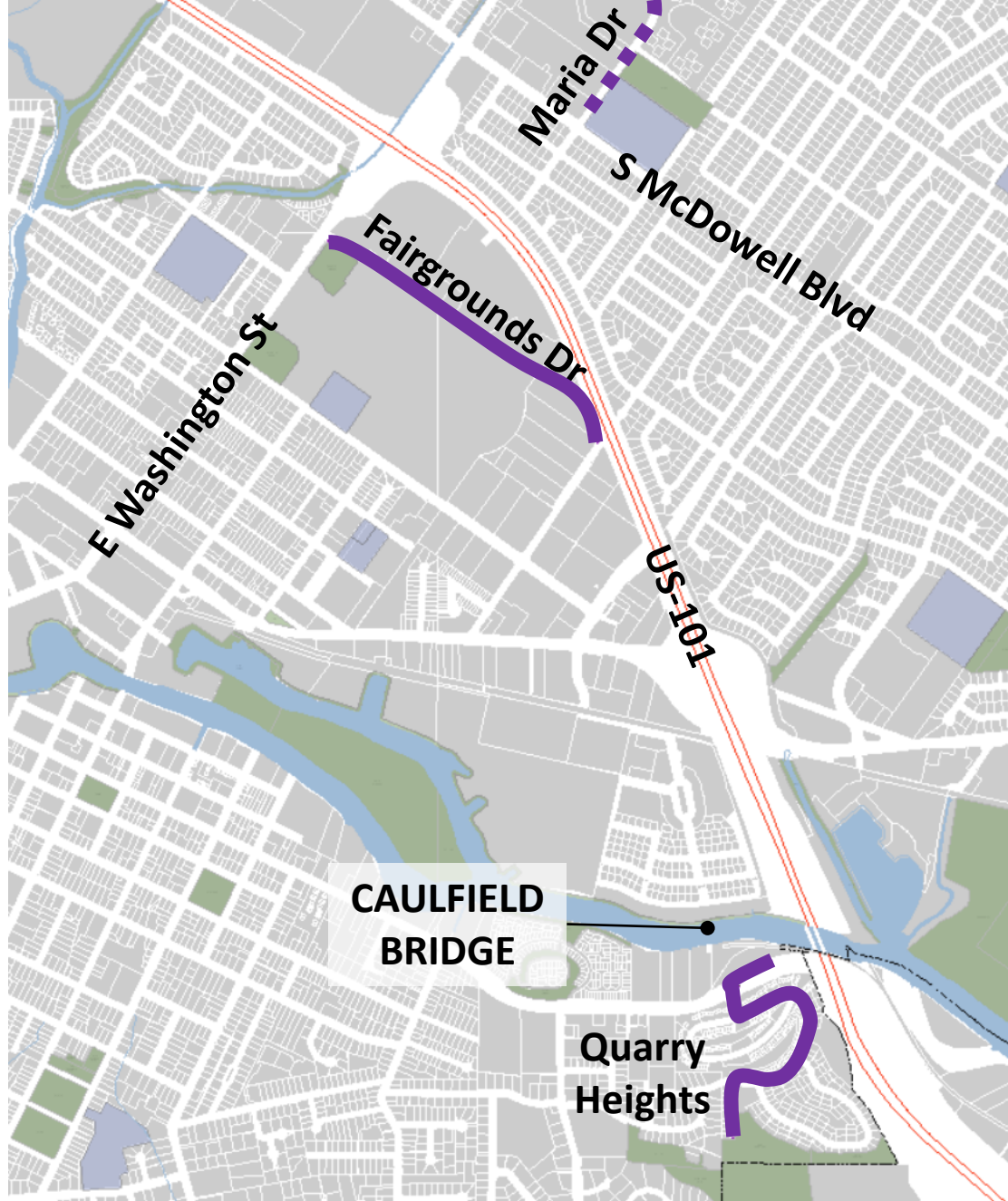
- 5) Explore improvements to Central Green
- 6) Analyze intersection operations for Riverfront neighborhood streets
- 7) Coordinate with Petaluma River Place to ensure compatibility with roadway improvements

ACTIVE TRANSPORTATION CONNECTIONS

- EXISTING/
PROPOSED MULTI-
USE TRAIL (PAVED)
- EXISTING/
PROPOSED BIKE
LANES (CLASS
II/IIB/IV)
- EXISTING MULTI-
USE TRAIL
(UNPAVED)



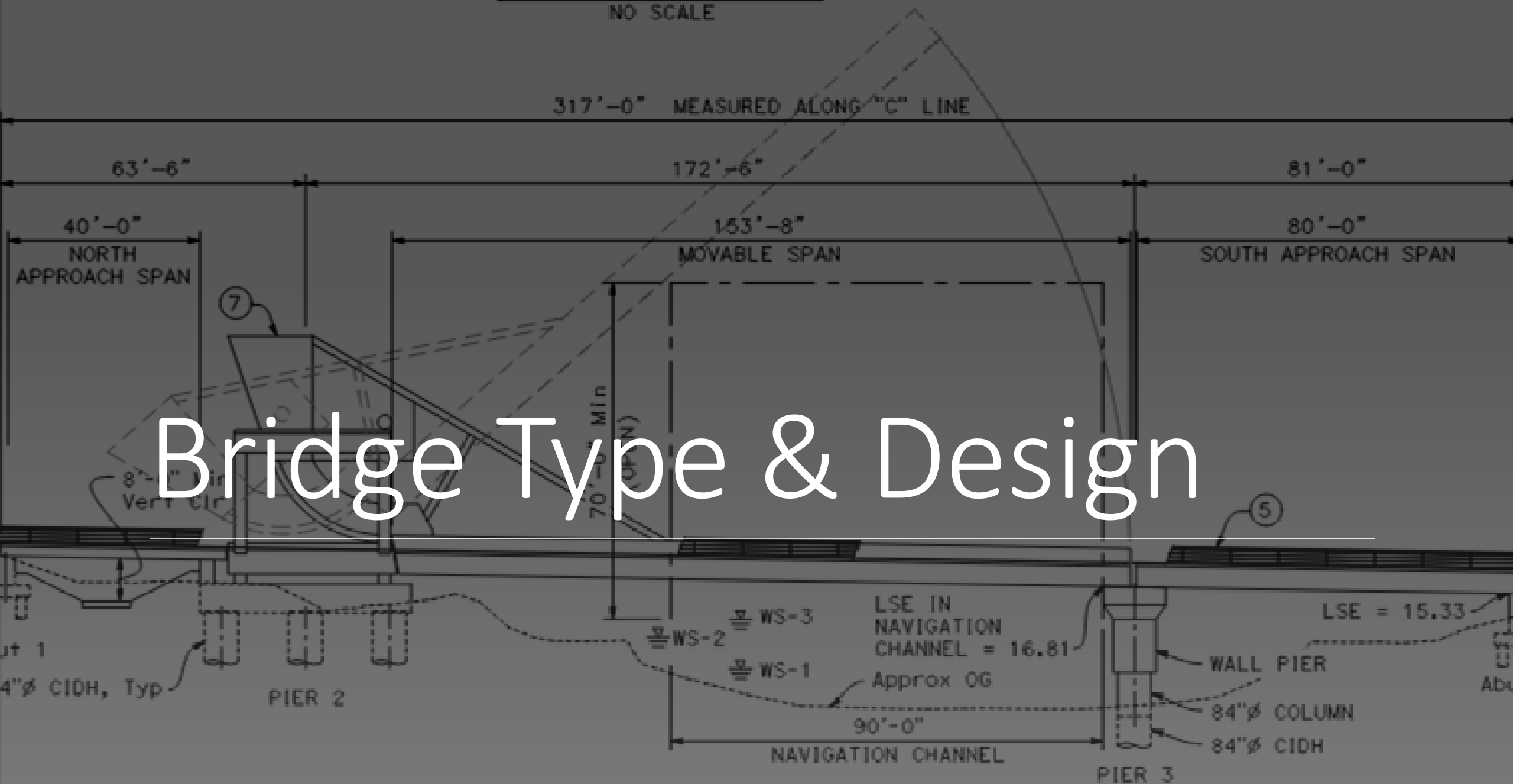
- Existing inactive recycled water mains
- Recycled water main under construction (to be activated upon completion)



Recycled Water

- Exploring potential to include recycled water connection under river leveraging bridge construction
- Would connect existing inactive mains at Fairgrounds Drive and Quarry Heights

Bridge Type & Design



Bridge Type & Design Design Criteria

Provide 90 foot horizontal and 70 foot vertical clearances for navigable waterway (US Coast Guard requirement)

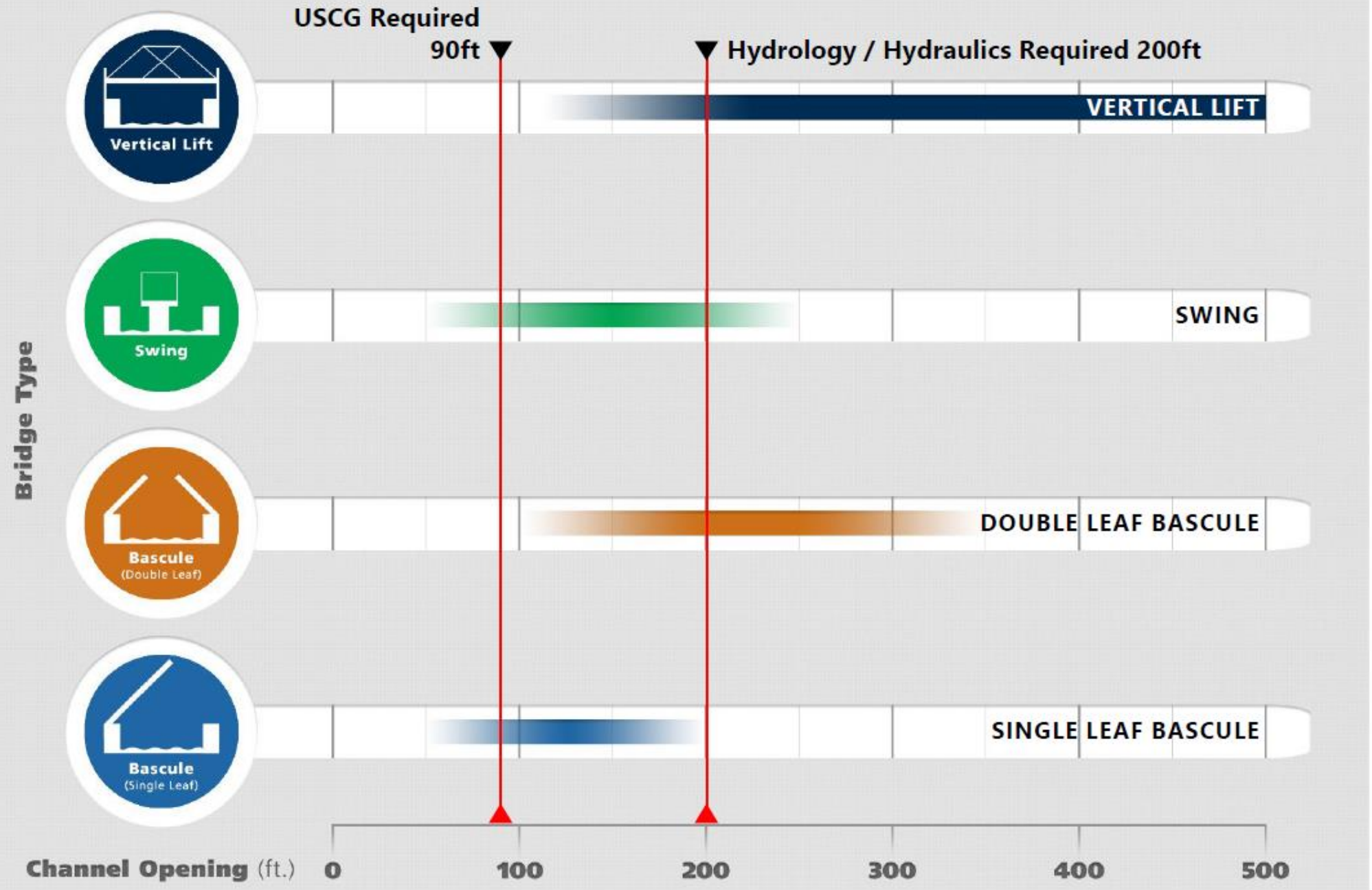
Minimize impacts on water surface elevation/flooding

Ensure traffic queue does not block Petaluma Blvd. S/Crystal Lane roundabout when bridge is open

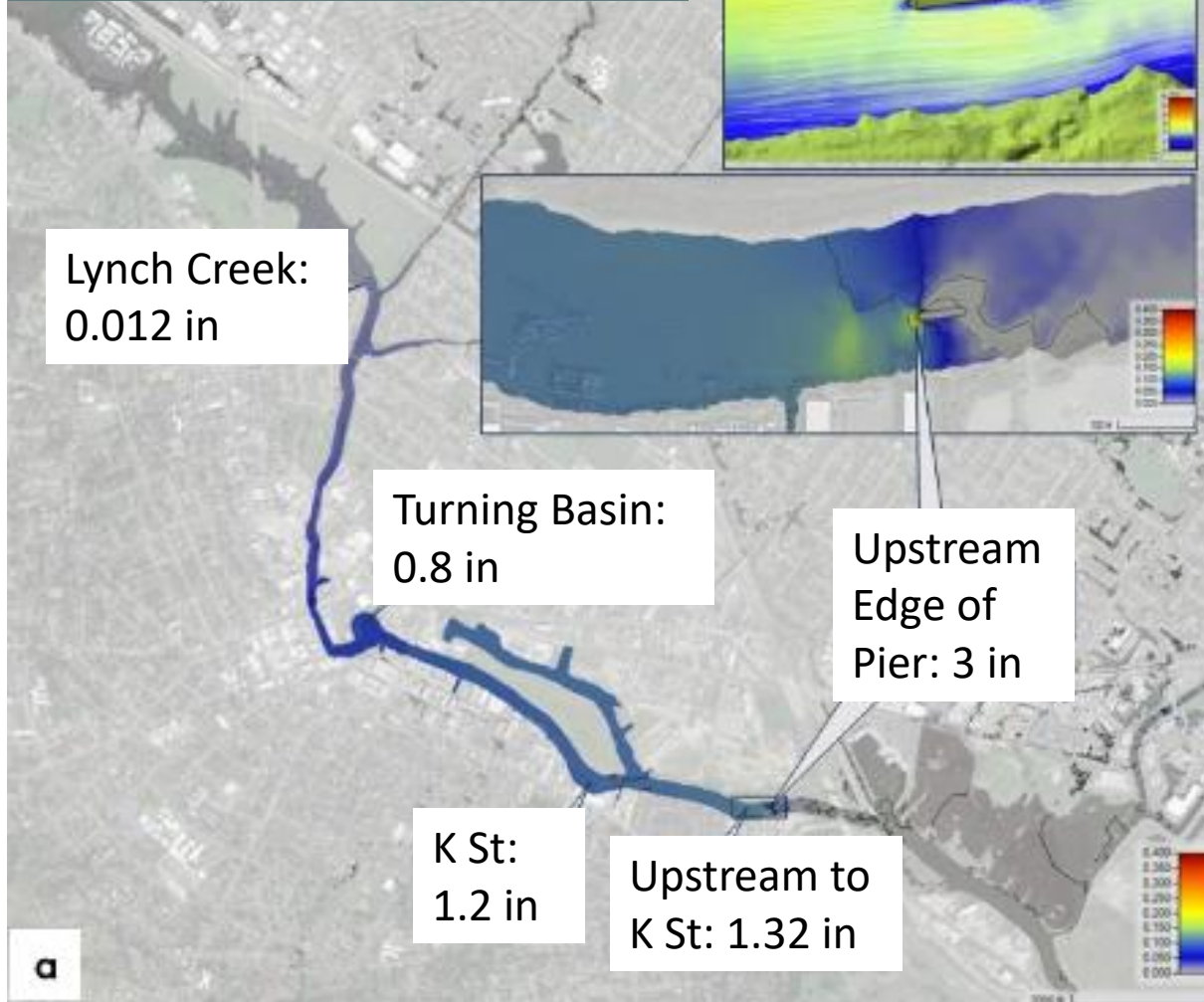
Provide undercrossing for River Trail along north bank

Identify most cost-effective moveable bridge type that meets above criteria

OPTIMAL BRIDGE TYPE BY CHANNEL WIDTH

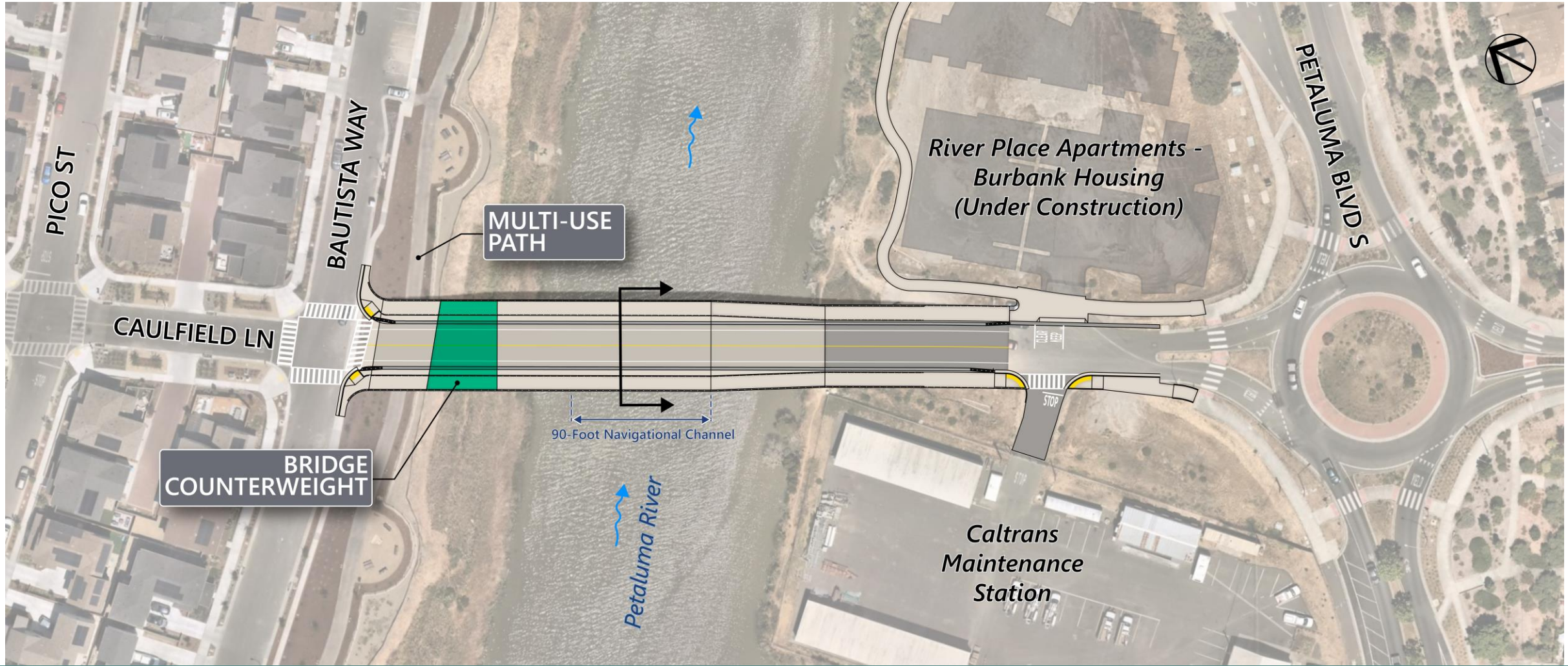


UPSTREAM WATER SURFACE INCREASE RELATED TO PIER

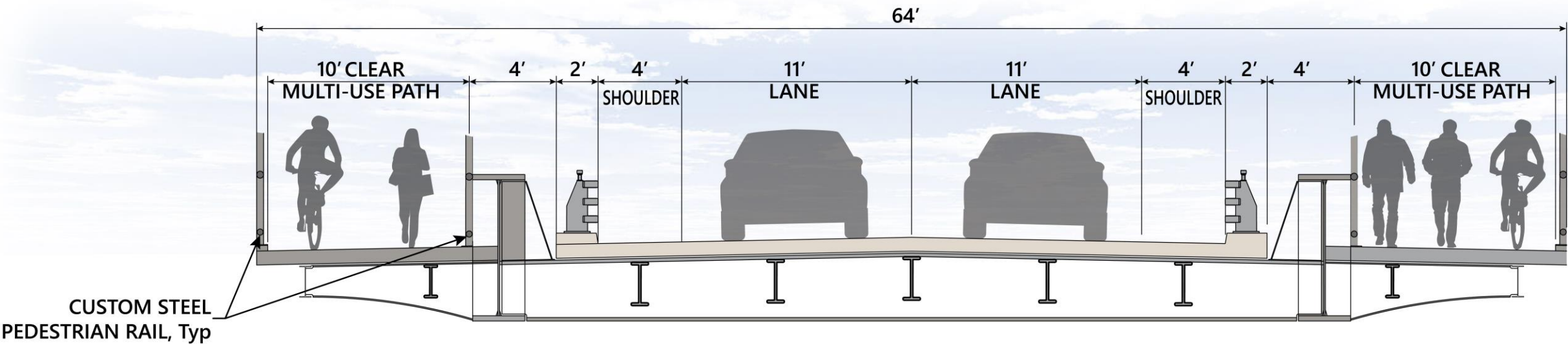


Hydraulic Modeling

- Optimized pier orientation, shape, and footprint
- Minimal upstream impacts related to addition of pier
- Evaluating using end-of-century flood model with sea level rise (6.9 feet)



Bridge Layout



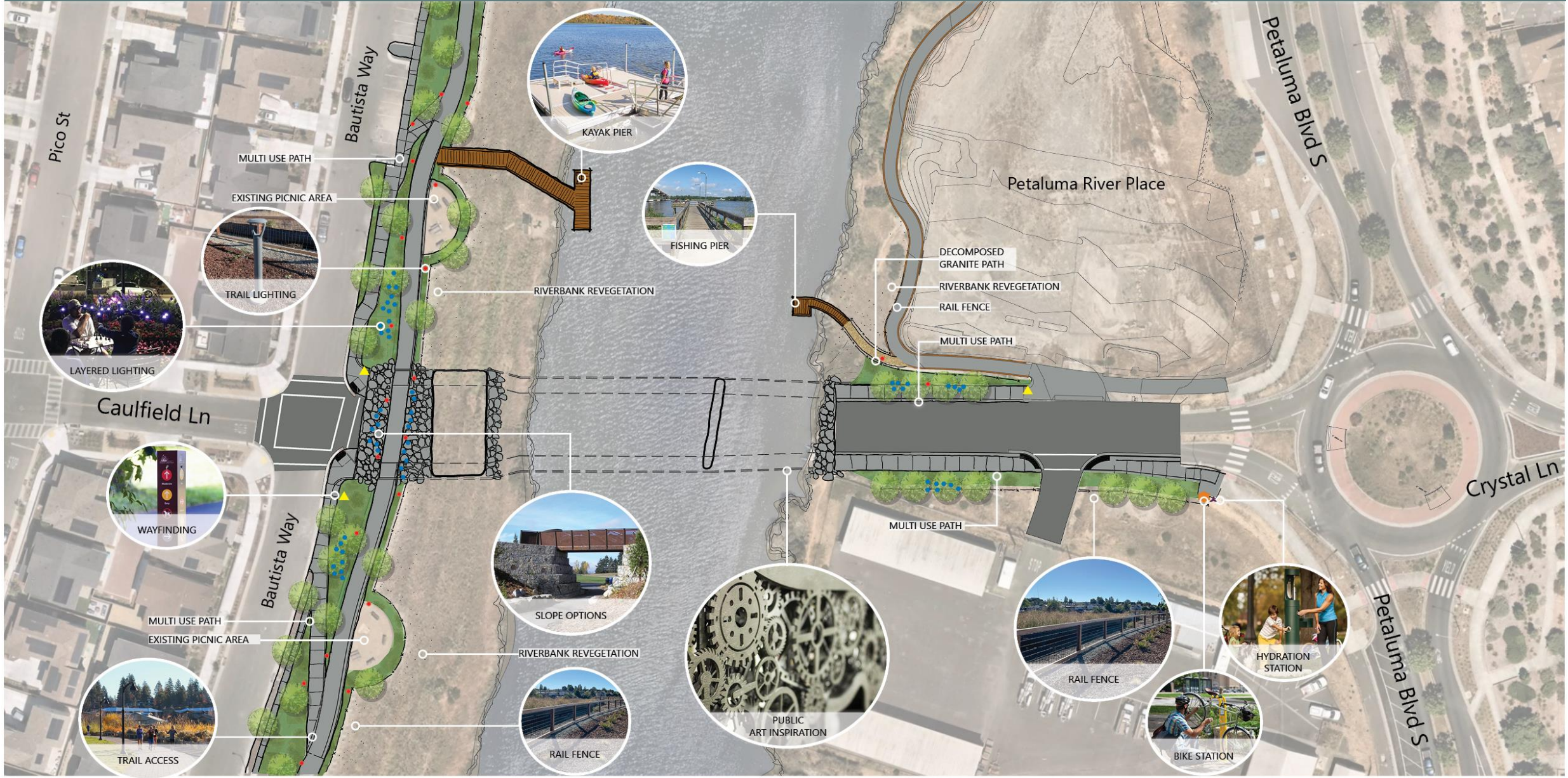
MOVABLE BRIDGE CROSS SECTION

Bridge Layout



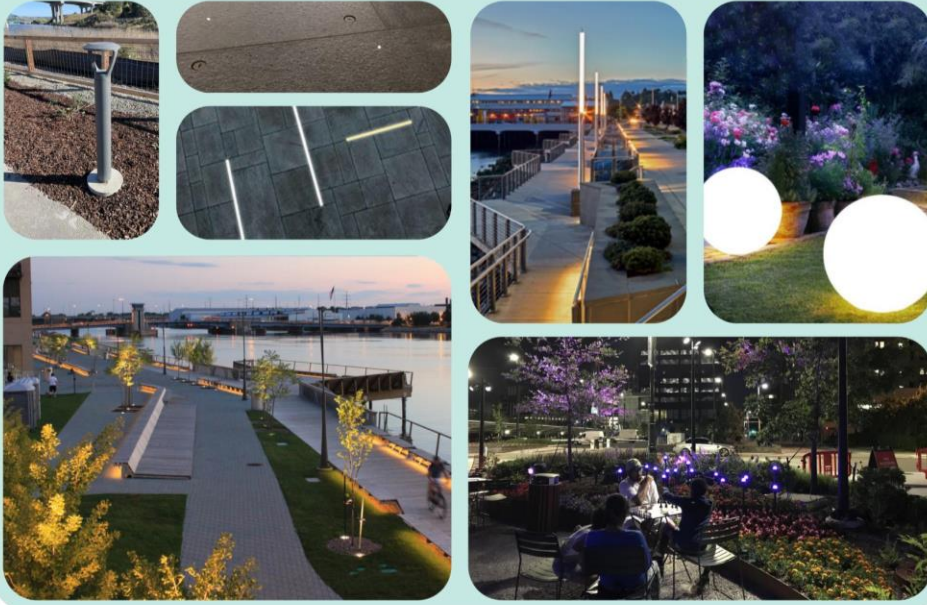
Amenities

POTENTIAL AMENITIES & DESIGN ELEMENTS



INSPIRATIONAL IMAGES

LANDSCAPE LIGHTING OPTIONS



BRIDGE SLOPE OPTIONS



LANDSCAPE PLANTING FEATURES



PEDESTRIAN/BIKE AMENITIES



RAIL FENCE OPTIONS



WAYFINDING AND SIGNAGE

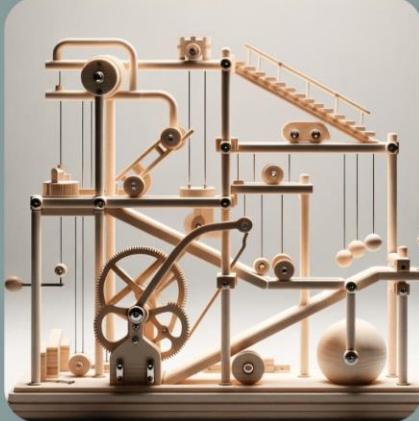


ACTIVITY OPTIONS



INSPIRATIONAL IMAGES

PUBLIC ART INSPIRATION



BRIDGE LIGHTING OPTIONS



BRIDGE COLOR OPTIONS



A photograph of a community engagement event. In the foreground, a woman in a green shirt is smiling and talking to a group of people. Behind her, a man in a black hoodie and a baseball cap is also engaged in conversation. To the right, a woman in a white jacket is looking at a document. In the background, several other people are standing and talking. A table with a blue cloth is in the foreground, with a sign that says "WELCOME" and some papers on it. The text "Community Engagement Plan" is overlaid in white on the image.

Community Engagement Plan

Community Engagement Plan

Design Development

- **October 2023:** Community Open House & Survey
- **March 2024:** Pedestrian & Bicycle Advisory Committee
- **May 2024:** Riverfront Neighborhood Meeting
- **June 2024:** City Council Update
- **July 2024:** Public Comment Notice to Mariners (by US Coast Guard)

Environmental Review

- **Fall 2024:** Draft Environmental Document released for public comment
- **Spring 2025:** Adoption and Certification of Final Environmental Document

Design Refinement

- **Fall 2024:** Community Open House & Survey for first round of bridge renderings and proposed circulation improvements and amenities
- **Winter 2024/25:** City Council Workshop for second round of bridge renderings and proposed circulation improvements and amenities

Questions?
