

# Policy Framework Discussion: Safety & Flood Resilience

Climate Action Commission | June 13, 2024

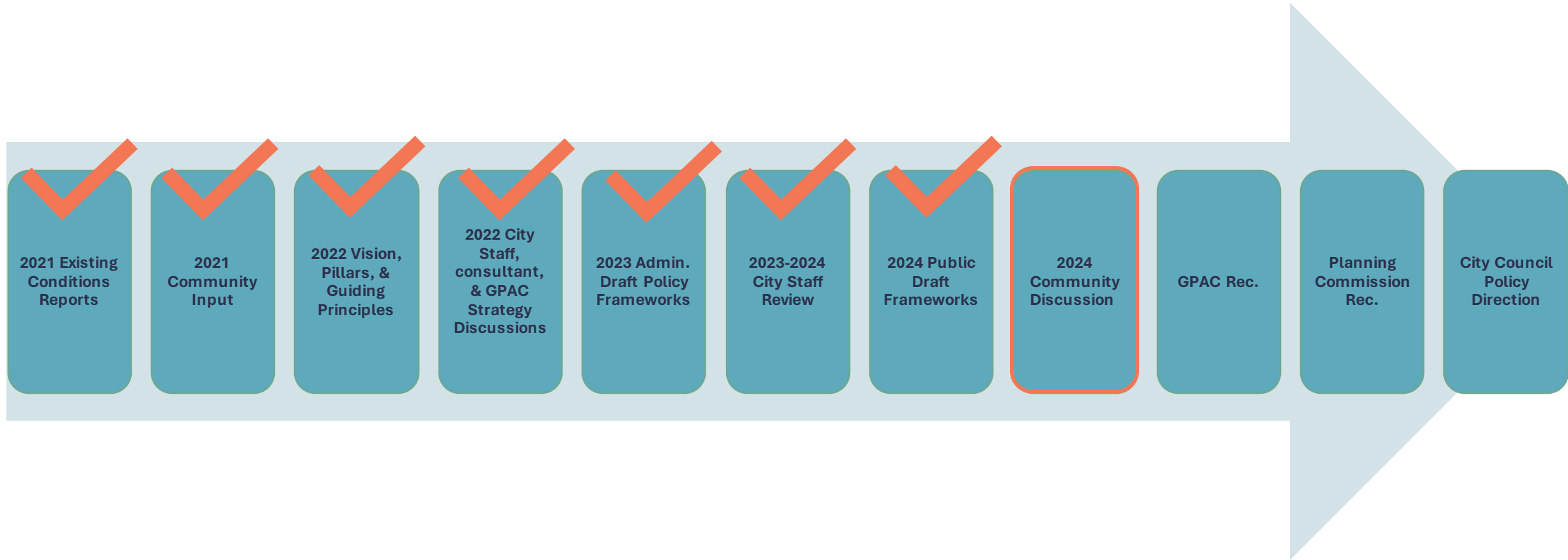
# Policy Framework Purpose & Structure

- **Purpose of the Frameworks:** Outline the proposed General Plan goals, policies, and implementation actions
- **Goals:** A general statement that expresses the outcomes towards which planning efforts are directed; often a topic-specific component of the Vision
- **Policies:** A statement of intent or direction that contributes toward achieving a goal and that guides decision-making
- **Actions:** A specific activity, procedure, program, or project aimed at implementing a policy

## Example

- Goal FAC-1: High-Quality Public Facilities
  - Policy FAC-1.1: Update, expand, relocate, or replace public facilities
    - Action FAC-1.1.3: Plan, design, and construct a new centrally located Fire Station and Emergency Operations Center, to include shared meeting spaces and flex space for other public uses.

# Policy Framework Evolution



# Policy Frameworks

ARTS, CREATIVITY, AND  
CULTURE



PARKS



HISTORIC RESOURCES



ENVIRONMENTAL JUSTICE



SAFETY



ECONOMIC DEVELOPMENT



INFRASTRUCTURE AND  
UTILITIES



MOBILITY AND  
TRANSPORTATION



NATURAL ENVIRONMENT



FLOOD RESILIENCE



PUBLIC FACILITIES



NOISE



GOVERNANCE AND  
IMPLEMENTATION



LAND USE



View the  
Frameworks  
[planpetaluma.org](http://planpetaluma.org)

# The General Plan will be different...

- Compelling, holistic, integrated, strategic approach
- Different organization
  - By element
  - By themes
  - By City department
- Digital General Plan: <https://shapessf.com/> example
- Implementation Plan
  - Action matrix: action, implementor, priority, timeframe
  - Roles for City, community, State, etc.
- Tracking progress (see the Implementation & Governance framework)
  - Track Implementation Plan progress
  - Monitor Performance Metrics Dashboard

# How to Provide Input

# Framework Review Form

In light of the Vision, Pillars, and Guiding Principles prepared by the GPAC and adopted by the City Council (<https://www.planpetaluma.org/documents#gpuvision>):

What are the most important policies in this framework? We recommend identifying the top 5 (or fewer) policies and ranking them in order of importance.

| Policy | Explanation |
|--------|-------------|
|        |             |
|        |             |

What concerns do you have about the policies in this framework? For example, are they unclear? Should they be softened or strengthened? Do you disagree with the policy direction?

| Policy | Explanation |
|--------|-------------|
|        |             |
|        |             |



# Policy Framework Community Meetings

| CCB   | Meeting Date                               | Key Frameworks to be Reviewed  |
|---|--|--|
| Bike + Ped (PBAC)<br>Transit                | May 1, 2024                                | Transportation   |
| Airport                                     | May 2, 2024                                | Transportation   |
| Historic & Cultural (HCPC)                  | May 7, 2024                                | Historic Resources   |
| Climate Action Commission<br>(CAC)          | May 9, 2024                                | Transportation & Natural Environment   |
| Senior                                      | May 9, 2024                                | Environmental Justice  |
| PlanFest – Public Event                     | May 11, 2024                               | All!   |
| Recreation, Music, & Parks<br>Tree Advisory | May 15, 2024                               | Parks, Natural Environment, Public Facilities  |
| Public Art                                  | May 30, 2024                               | Arts, Creativity, and Culture  |
| Planning Commission                         | May 28, June 11, June<br>18, June 25, 2024 | Natural Environment, Transportation, Parks, Flood<br>Resilience, Economic Development, Infrastructure and<br>Utilities, Environmental Justice, Noise, Land Use |
| Climate Action Commission<br>(CAC)          | <b>June 13, 2024</b>                       | <b>Flood Resilience &amp; Safety</b>   |
| GPAC  | June 20, 2024                              | Working Group recommendations on all Frameworks  |



# Providing Feedback

## Project Website

- Organized by Policy Framework topic
- Links to complete Policy Framework documents
- Embedded Online Feedback Form

Review other Policy Frameworks and provide feedback:

<https://www.planpetaluma.org/policy-frameworks>



PLAN DOCUMENTSGET INVOLVED!GPACSUBSCRIBE



### GENERAL PLAN UPDATE POLICY FRAMEWORKS

The Policy Frameworks for the General Plan Update are now available for review! These frameworks were created through an extensive process using the Vision, Pillars, and Guiding Principles developed by the General Plan Advisory Committee, analysis of the existing conditions, existing plans, and the needs of the community. The General Plan Team identified the need for 14 Policy Frameworks, which can be viewed by clicking on the links in the sections below.

These policies, pulled together into topic-based "Policy Frameworks", are detailed documents that cover much of what it means to be a City - from shorter-term facilities maintenance and infrastructure needs to long-term planning for things like future climate risks, business development, and historic preservation. The frameworks ask fundamental questions about what local government can do to improve the lives of our residents. They outline the ways Petaluma can bring these improvements to life over the next 20+ years. In the draft General Plan, some of these frameworks may be combined or reorganized as they are formed into the General Plan elements.

Please note: the Land Use and Flood Resiliency Frameworks are not yet available (see below for more details). As there is a lot of content in the frameworks below, we are releasing them now to give members of the public ample time to review. Additionally, the Housing Element update was completed, adopted, and certified in 2023. [Click here to see the Final Housing Element.](#)

We are looking forward to receiving feedback from the public beginning on May 4, 2024. Please [join our mailing list](#) to be kept up to date on the public comment period, meetings, and events.

#### FRAMEWORKS



##### ARTS, CULTURE, AND CREATIVITY

Petaluma has a strong creative community and would like to expand access to art and creative industries for everyone. The Arts, Culture, and Creativity framework lays out plans to do this by strengthening our city's arts and culture programs, helping creative businesses thrive, and increasing the presence and visibility of artists in city projects and processes.

[To read the Arts, Culture, & Creativity framework, click HERE.](#)



##### ECONOMIC DEVELOPMENT

Petaluma wants its economy to provide opportunities for all community members to support themselves and reach their financial goals. Our city is also prioritizing having the funds needed to provide the services and infrastructure our community desires. This framework helps fulfill these aims by finding ways to make space for a variety of industries, attracting visitors, and providing transportation options.

[To read the Economic Development framework, click HERE.](#)



City of Petaluma General Plan | 9

# Policy Framework Presentations On-Demand

Presentations to the committees and commissions are available at [planpetaluma.org/frameworkrecordings](https://planpetaluma.org/frameworkrecordings)

## PEDESTRIAN AND BICYCLE ADVISORY COMMITTEE AND TRANSIT COMMITTEE JOINT MEETING MAY 1, 2024

Transportation Policy Framework



## AIRPORT COMMISSION MAY 2, 2024

Transportation Policy Framework



## HISTORIC & CULTURAL PRESERVATION COMMITTEE - MAY 7, 2024

Historic Resources Policy Framework



## CLIMATE ACTION COMMISSION - MAY 9, 2024

Transportation and Natural Environment Frameworks



Note: No recording available for Senior Advisory Committee on May 9, 2024.

# Providing Feedback

## Online Feedback Form for each Framework

- Provide goal- and policy-specific feedback
- Provide general feedback



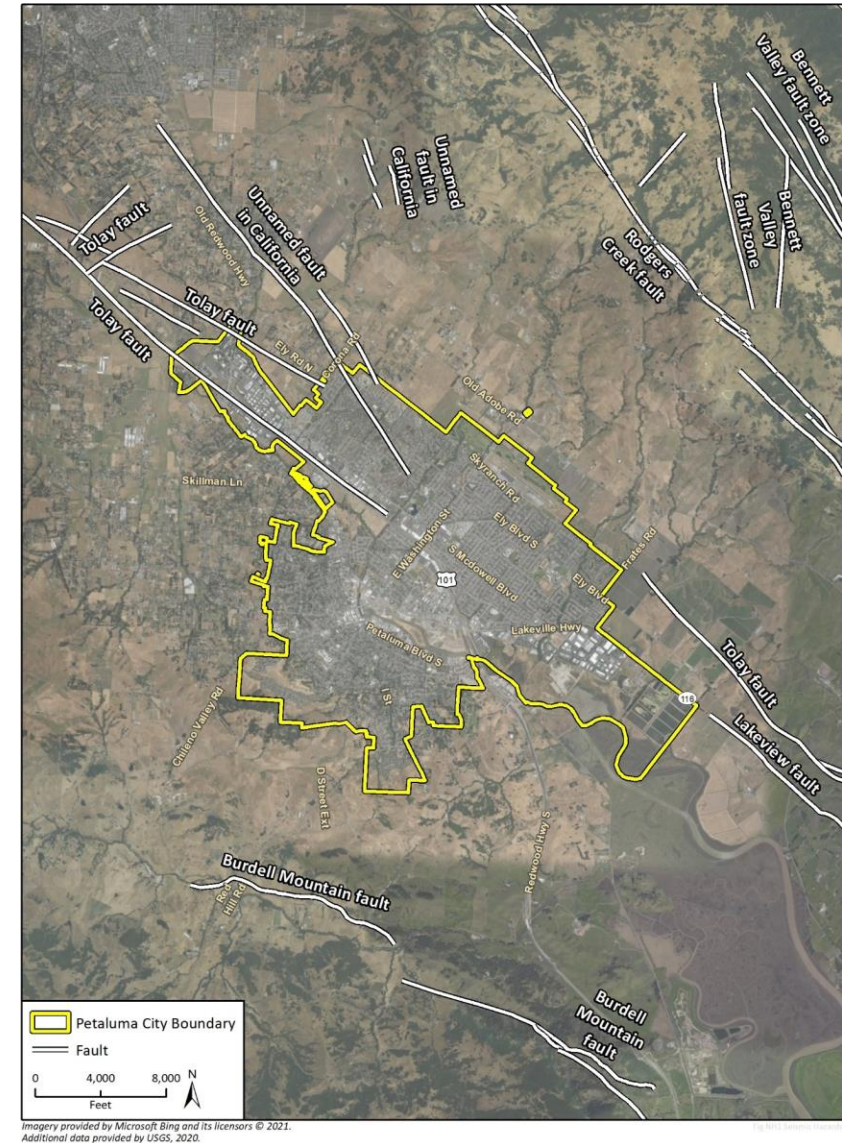
Review other Policy Frameworks and provide feedback:  
<https://www.planpetaluma.org/policy-frameworks>

# Safety Policy Framework



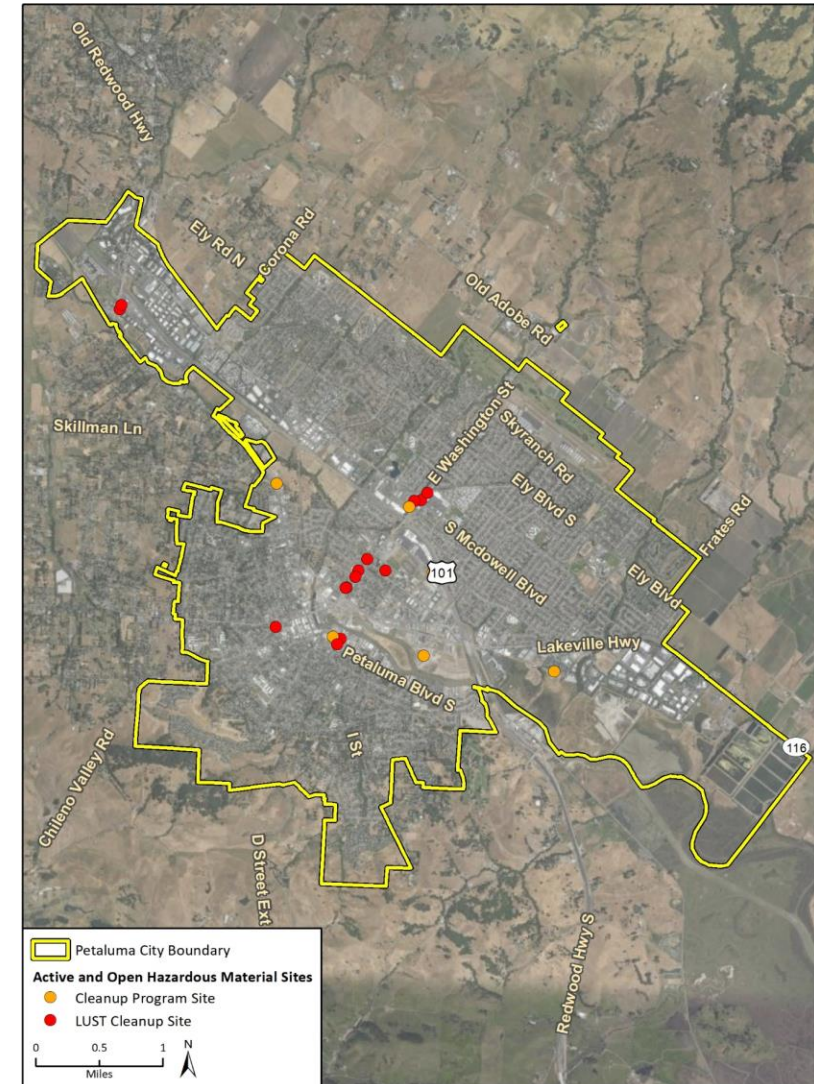
# Natural Hazards

- Petaluma is exposed to a variety of natural and man-made hazards, many of which will be exacerbated by climate change.
- Seismic activity continues to be a significant hazard risk.
- Heavy precipitation events have a high risk of causing flooding events on the back side of Industrial Ave and within the Payran neighborhood where there has been a history of flooding.
- There are high fire hazards areas near the city, particularly near the WUI.
- Areas like Downtown and the southwest may be exposed to multiple hazards, including flooding, sea level rise, seismic, and wildfire.



# Manmade Hazards

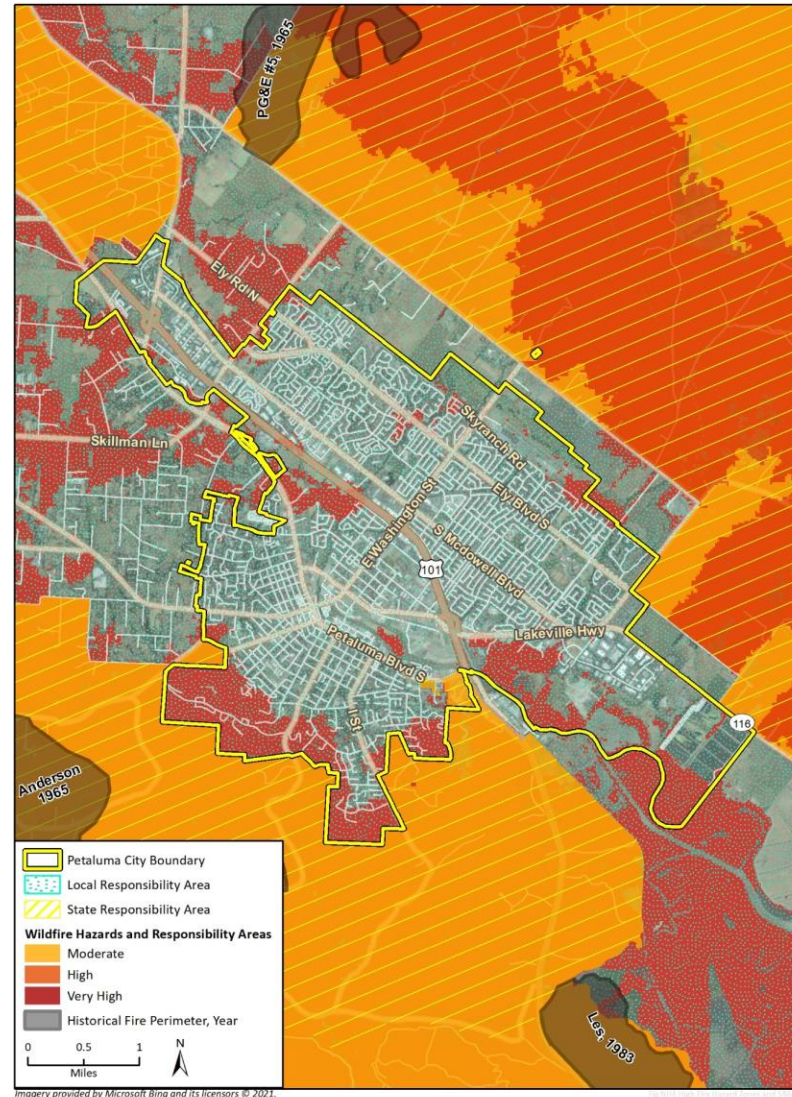
- There are currently 20 active hazardous material sites in the city.
- Most of the hazardous material sites are concentrated in the Downtown area.
- Sites include 14 Leaking Underground Storage Tank Cleanup Sites, and a previous superfund site along Highway 116 near South McDowell Boulevard was removed from superfund by EPA following cleanup.



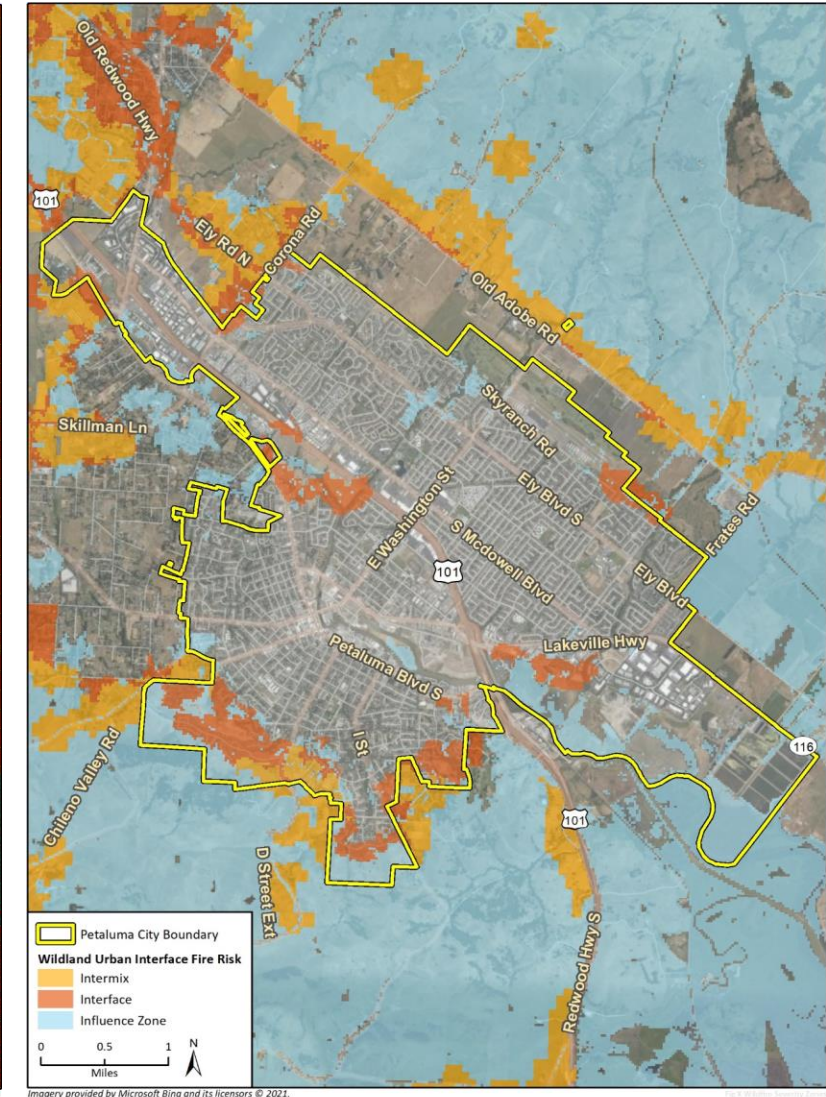


# Wildfire Hazards

- Petaluma is mostly surrounded by areas in the Moderate or High Fire Hazard Severity Zone.
- Many areas in the wildland-urban interface are residential areas near fire-prone vegetation.



Imagery provided by Microsoft Bing and its licensors © 2021.  
Additional data provided by CalFire, 2021; Wildfire Severity Hazard Class - City of Petaluma, California; Fire Responsibility Area, Historic Fire

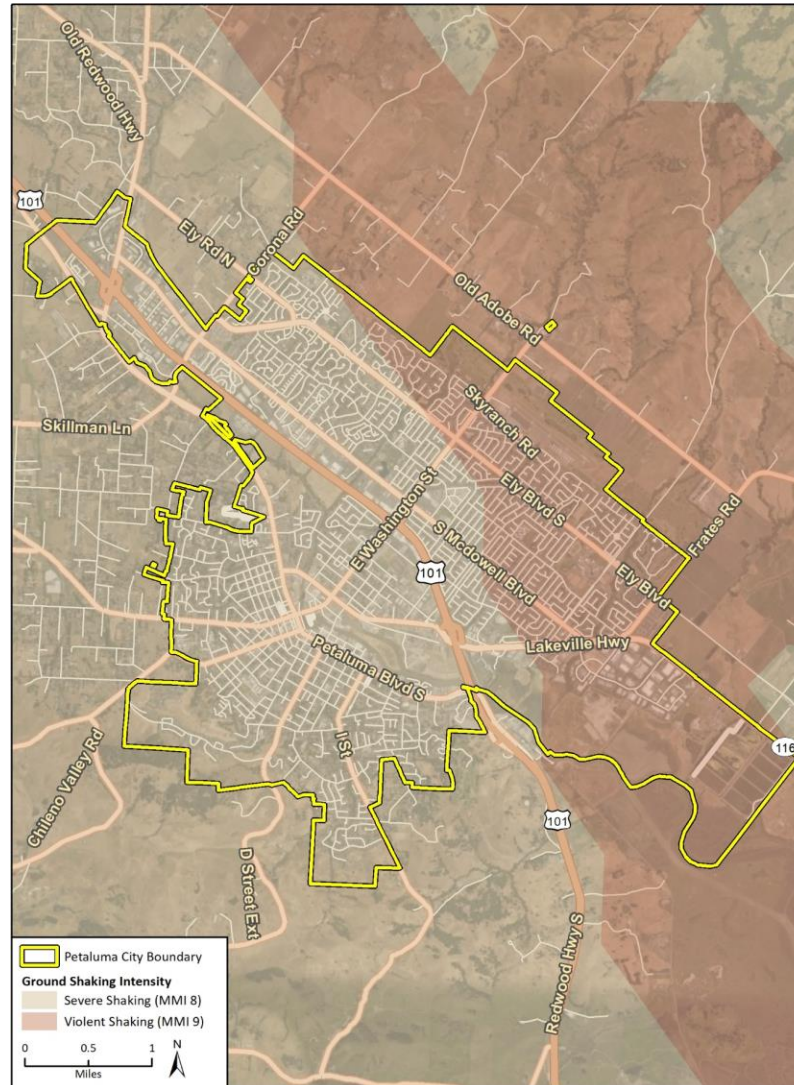


Imagery provided by Microsoft Bing and its licensors © 2021.  
Additional data provided by Cal Fire and Resource Assessment Program, 2021

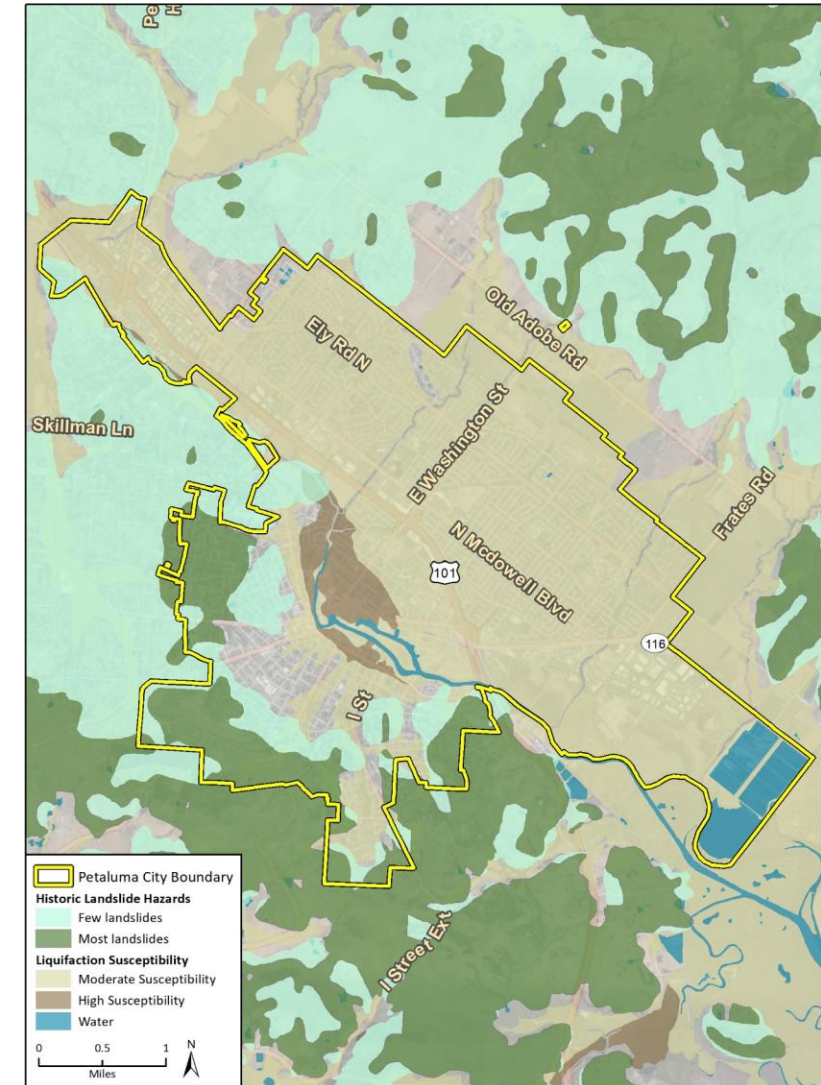


# Geologic Hazards

- The eastern and southeastern areas of the city will be most impacted by groundshaking in the event of a severe earthquake.
- Most of Petaluma is moderately susceptible to landslides.
- The hills to the northeast and southeast of the city have historically had the most landslide issues.



Imagery provided by Microsoft Bing and its licensors © 2021.  
Additional data provided by Metropolitan Transportation Commission, 2021



Imagery provided by Microsoft Bing and its licensors © 2021.  
Additional data provided by USGS, 2021.

# Climate Change Implications for Hazards

## Increasing Temperatures

- Extreme heat days will increase considerably in the city.
- Increasing temperatures and changing precipitation patterns can create periods of abnormally dry weather that create drought.
- Warmer, drier summers, high wind events, such as the Diablo winds, and increased vegetation growth, can create conditions suitable for wildfires.

## Changing Precipitation Patterns

- The Bay Area will continue to see larger precipitation fluctuations over the next century with very wet and very dry years.
- Boom to bust rainfall patterns will make it far more likely for wildfires to occur in the region and for “atmospheric rivers”, which can bring up to 50% of the region’s rainfall in a few days.

## Rising Sea Levels

- More extensive coastal flooding during storm events
- Higher groundwater table
- Stormwater flooding may increase as high bay levels can impede drainage of stormwater runoff.

# Fire & Police Services

## Fire

- The Petaluma Fire Department provides fire protection services to a total area of 184 square miles and a population of 70,000 people.
- The Department's fire service area includes portions of southern Sonoma County and Marin County.
- There are three Fire Department Stations located within the city limits and two volunteer fire stations are located southwest of the city.
- In response to wildfires, the Fire Department offers several resources to residents such as weed abatement and access to wildfire disaster loans.

## Police

- The Department has two stations (Police Department and Annex, Police Substation - Petaluma Valley Hospital).

# Foundations: Community Priorities

## Vision

- **We invest in each other.** We are a community where children and youth thrive, families in all forms are supported, and our elders flourish as they age in place.
- **We are forward-thinking leaders.** We have adapted to climate change with a community-driven, whole systems, and nature-based approach to development.

## Guiding Principles

1. Achieve carbon neutrality by 2030 and equitably foster a sustainable and resilient community in which today's needs do not compromise the ability of the community to meet its future needs.
5. Ensure the health and wellness of all residents.
6. Physically and psychologically integrate and connect the East and West sides of town.
13. Ensure infrastructure supports infill development and addresses the impacts of climate change.

## Pillars

- **Climate Action, Resilience, and Sustainability.** The General Plan must build climate-ready communities using science, technology, and bold ways of thinking to advance change in our relationship with the natural environment and to plan for current and future impacts.
- **Equity, Justice, and Demographic Changes.** Current demographic trends indicate that Petaluma will have an older, more diverse population well into the future. Petaluma commits to advancing social and economic justice to create an inclusive and equitable city in which all can thrive. The General Plan must prioritize supporting those who have been most affected by injustice and inequity and advances bold action in terms of housing, transportation, public spaces, and intergenerational and multi-cultural programs to take advantage of opportunities and meet challenges as they arise.



# Safety Goals

Goal SAF-1:  
Emergency  
Guidance and Tools

Goal SAF-2: High-  
Quality Emergency  
Services

Goal SAF-3:  
Responsive Public  
Safety Services

Goal SAF-4:  
Evacuation

Goal SAF-5: Critical  
Facilities Resiliency

Goal SAF-6: Climate  
Resilience

Goal SAF-7:  
Drought

Goal SAF-8: Wildfire  
Risk Management

Goal SAF-9:  
Earthquake  
Resiliency

Goal SAF-10:  
Hazardous Materials  
Management

# **Goal SAF-1: Emergency Guidance and Tools**

- Policy SAF-1.1: Update Emergency Operation Plans
- Policy SAF-1.2: Prepare the Community for Emergencies
- Policy SAF-1.3: Seek Funds for Emergency Operations

# **Goal SAF-2: High-Quality Emergency Services**

- Policy SAF-2.1: Maintain Quality Emergency Response Service
- Policy SAF-2.2: Maintain ISO Rating
- Policy SAF-2.3: Provide Adequate EMS Services
- Policy SAF-2.4: Educate the Public on Risk Reduction
- Policy SAF-2.5: Maintain Mutual Aid Agreements

## **Goal SAF-3: Responsive Public Safety Services**

- Policy SAF-3.1: Ensure Staffing for Emergency Response
- Policy SAF-3.2: Fund Crime Prevention Programs
- Policy SAF-3.3: Implement Public Safety Recommendations
- Policy SAF-3.4: Use Design Standards for Crime Prevention
- Policy SAF-3.5: Provide Rapid Police Response
- Policy SAF-3.6: Provide Proficient Operations Management
- Policy SAF-3.7: Consider Crime Analysis Unit
- Policy SAF-3.8: Engage the Community on Policing Policies



## **Goal SAF-4: Evacuation**

- Policy SAF-4.1: Prepare Single-Access Neighborhoods
- Policy SAF-4.2: Provide Emergency Evacuation Resources

## **Goal SAF-5: Critical Facilities Resiliency**

- Policy SAF-5.1: Establish Resilient Resource Centers
- Policy SAF-5.2: Establish Inter-Jurisdictional Evacuation Plans
- Policy SAF-5.3: Create Hazard Resilient Critical Facilities
- Policy SAF-5.4: Prepare for Multi-Hazard Scenarios
- Policy SAF-5.5: Ensure Public Services During Emergencies

## **Goal SAF-6: Climate Resilience**

- Policy SAF-6.1: Update Climate Resiliency Plans
- Policy SAF-6.2: Consider Climate in Development Standards
- Policy SAF-6.3: Prepare Buildings for Climate Change

## **Goal SAF-7: Drought**

- Policy SAF-7.1: Update the Urban Water Management Plan
- Policy SAF-7.2: Increase Water Efficiency

## **Goal SAF-8: Wildfire Risk Management**

- Policy SAF-8.1: Maintain Fire Response Coordination
- Policy SAF-8.2: Implement Fire Protection Programs
- Policy SAF-8.3: Create Fuel Management Plan
- Policy SAF-8.4: Minimize Wildland-Urban Interface Risk
- Policy SAF-8.5: Promote Fire Safe Development

## **Goal SAF-9: Earthquake Resiliency**

- Policy SAF-9.1: Reduce Seismic Risk on Critical Infrastructure
- Policy SAF-9.2: Consider Geotechnical Information for Development

# **Goal SAF-10: Hazardous Materials Management**

- Policy SAF-10.1: Maintain Hazardous Materials Standards
- Policy SAF-10.2: Promote Safe Transport of Hazardous Material
- Policy SAF-10.3: Update Resources on Household Hazards
- Policy SAF-10.4: Reduce Use of Toxic Materials
- Policy SAF-10.5: Ensure Site Remediation

# Flood Resilience Policy Framework





**Water comes down the land, creeks and river from rain**

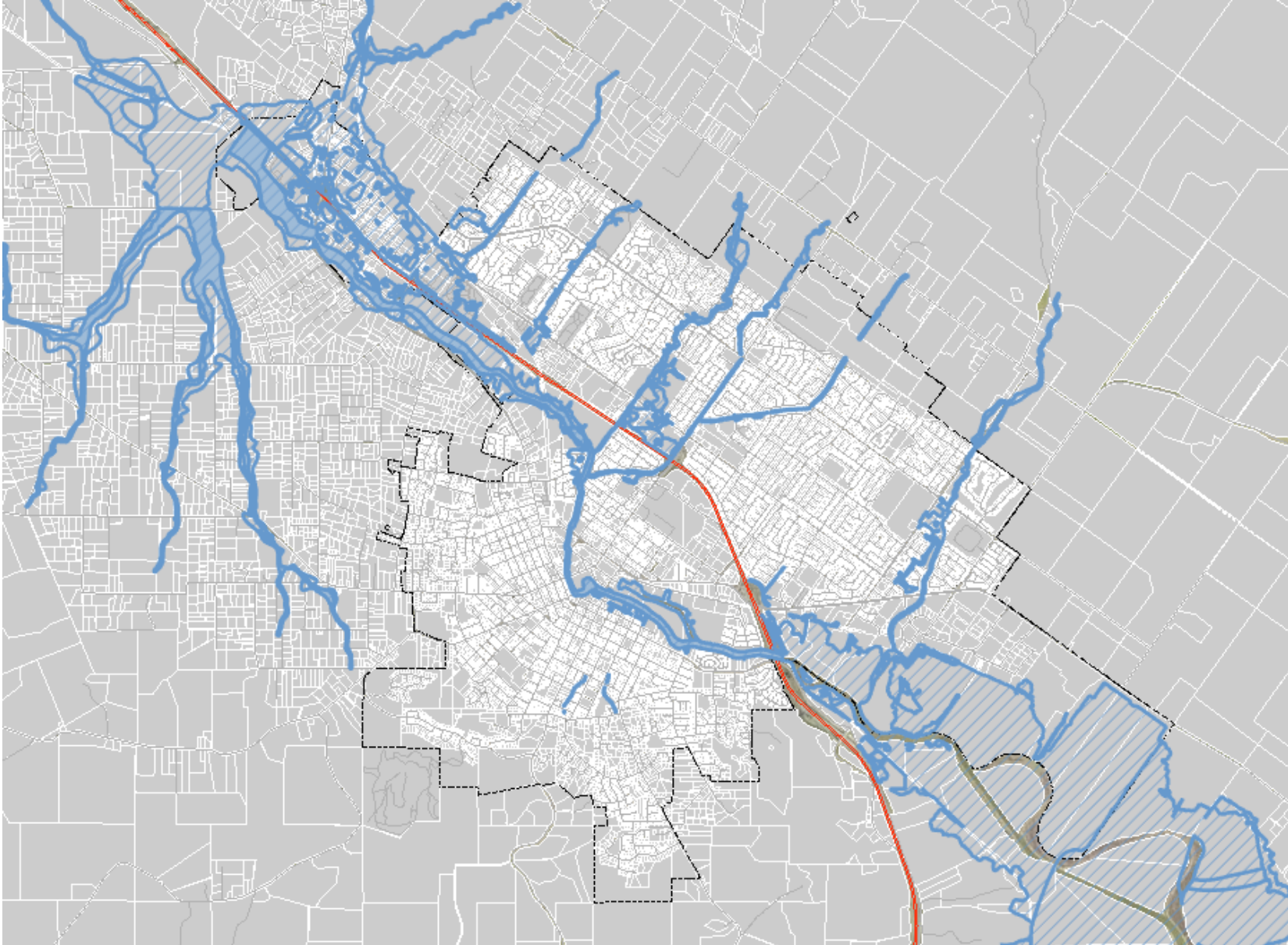




**Water also comes up the River from the Bay**



# Current FEMA 100-yr (1% Chance) Floodplain



- FEMA maps show modeling based on historic precipitation data and existing land use.
- Utilized to meet regulations required for funding mechanisms and compliance
- FEMA maps do not consider climate change impacts, including increased precipitation, changes to development patterns, and sea level rise, and do not compound with the following sea level rise maps.

# MODEL PROCESS WAS PRECISE, PETALUMA FOCUSED

## USED BEST MODEL

HEC-HMS and HEC-RAS 2D

## USED BEST, PETALUMA DATA

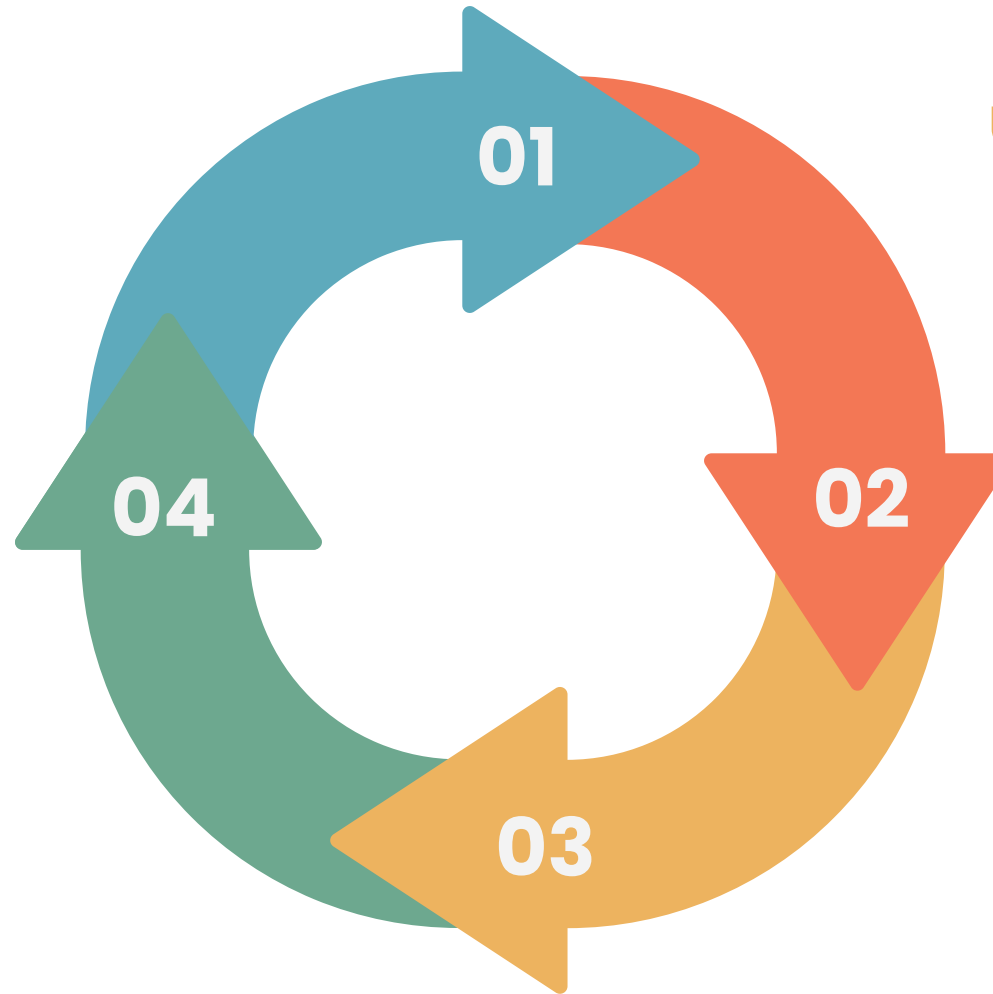
Rainfall data, terrain data (ground surface), structure data

## GOT AS GRANULAR AS POSSIBLE

We walked the streams to determine roughness values, hundreds of culverts/bridges

## RAN MODEL, COMPARED TO DATA, DOUBLE CHECKED

Calibrated to the three largest events of record, checked model results carefully for reasonableness stream by stream, reach by reach



# PETALUMA FLOOD MODELING

Includes Climate Change Impacts, Uses Petaluma Specific Data

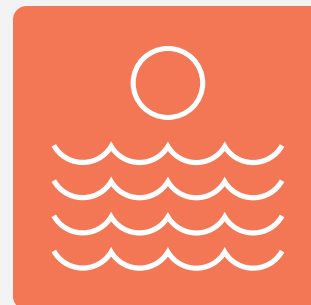
## SEA LEVEL RISE

Based on current science



## MEAN HIGHER HIGHTIDE

The average of the highest tides each year as provided by NOAA.



## HYDROLOGY and HYDRAULICS

Ground Surface Terrain, Field Surveys, Land Uses, Vegetation levels



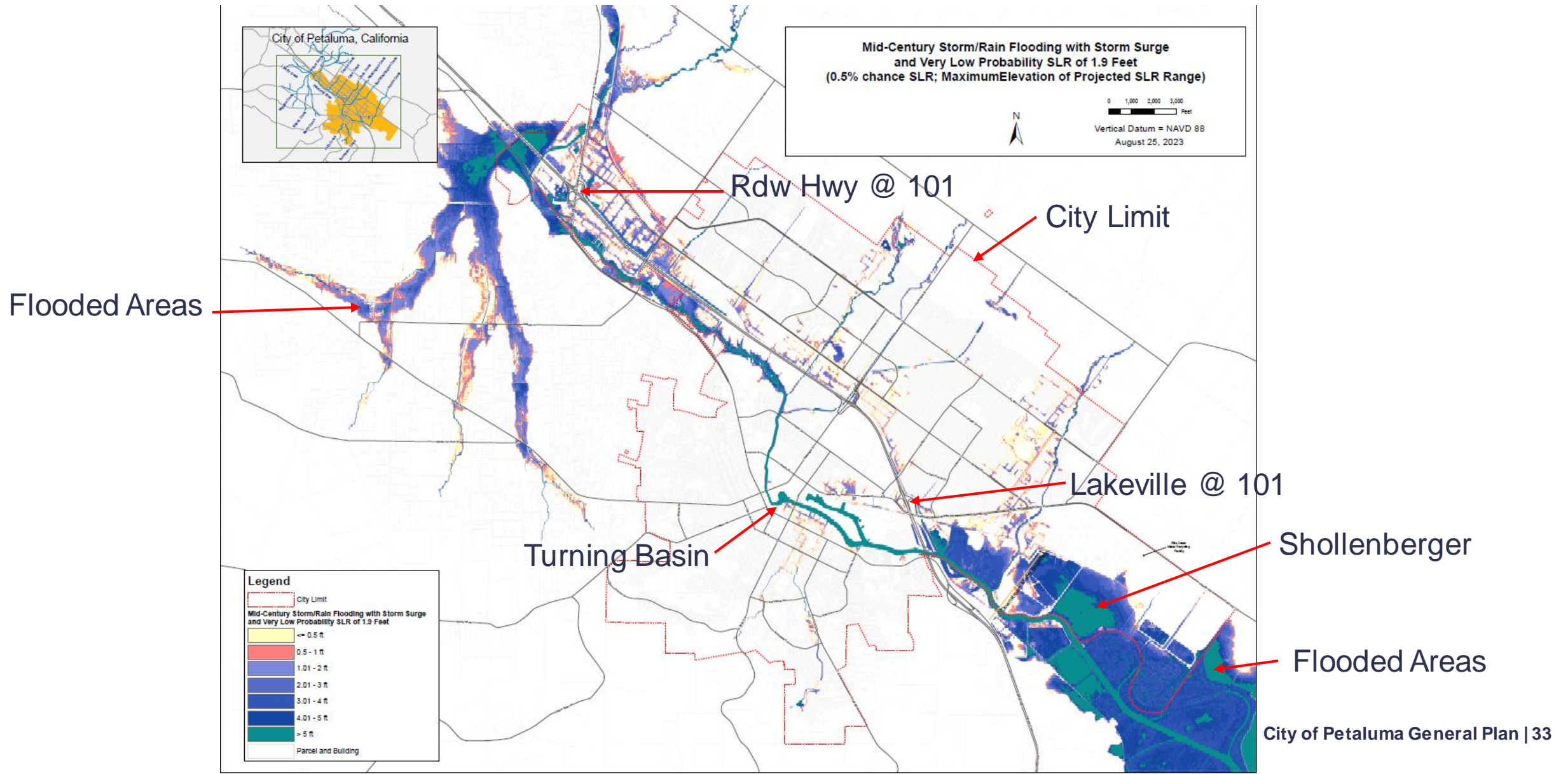
## RAIN

Custom rain study specific to Petaluma in 2023. Considered how much rain is reasonable, where it falls in the watershed heaviest, and how quickly it falls.



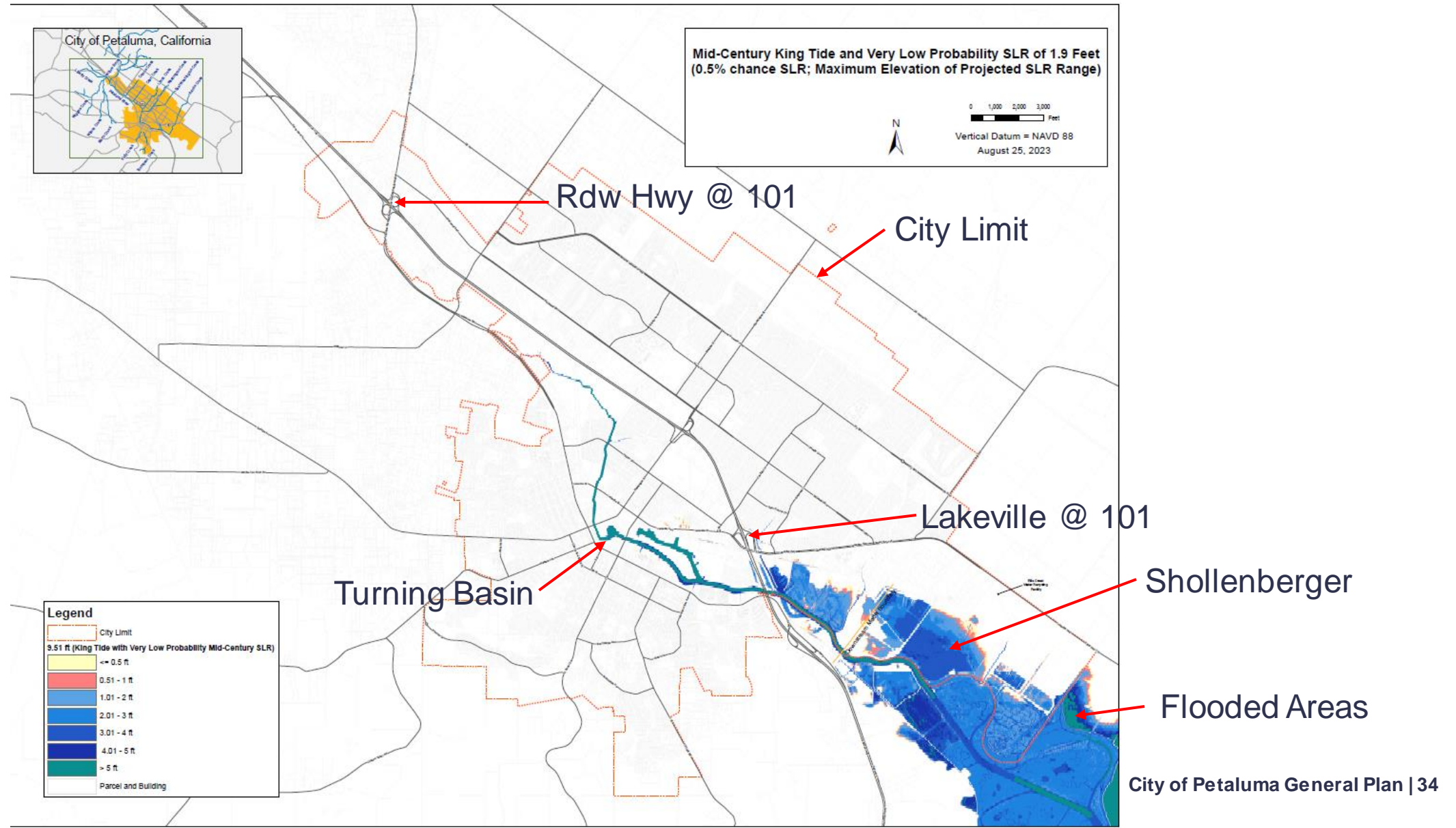
**FLOOD  
MODEL**

# Mid-Century SLR (1.9 feet), Rain and Storm Surge

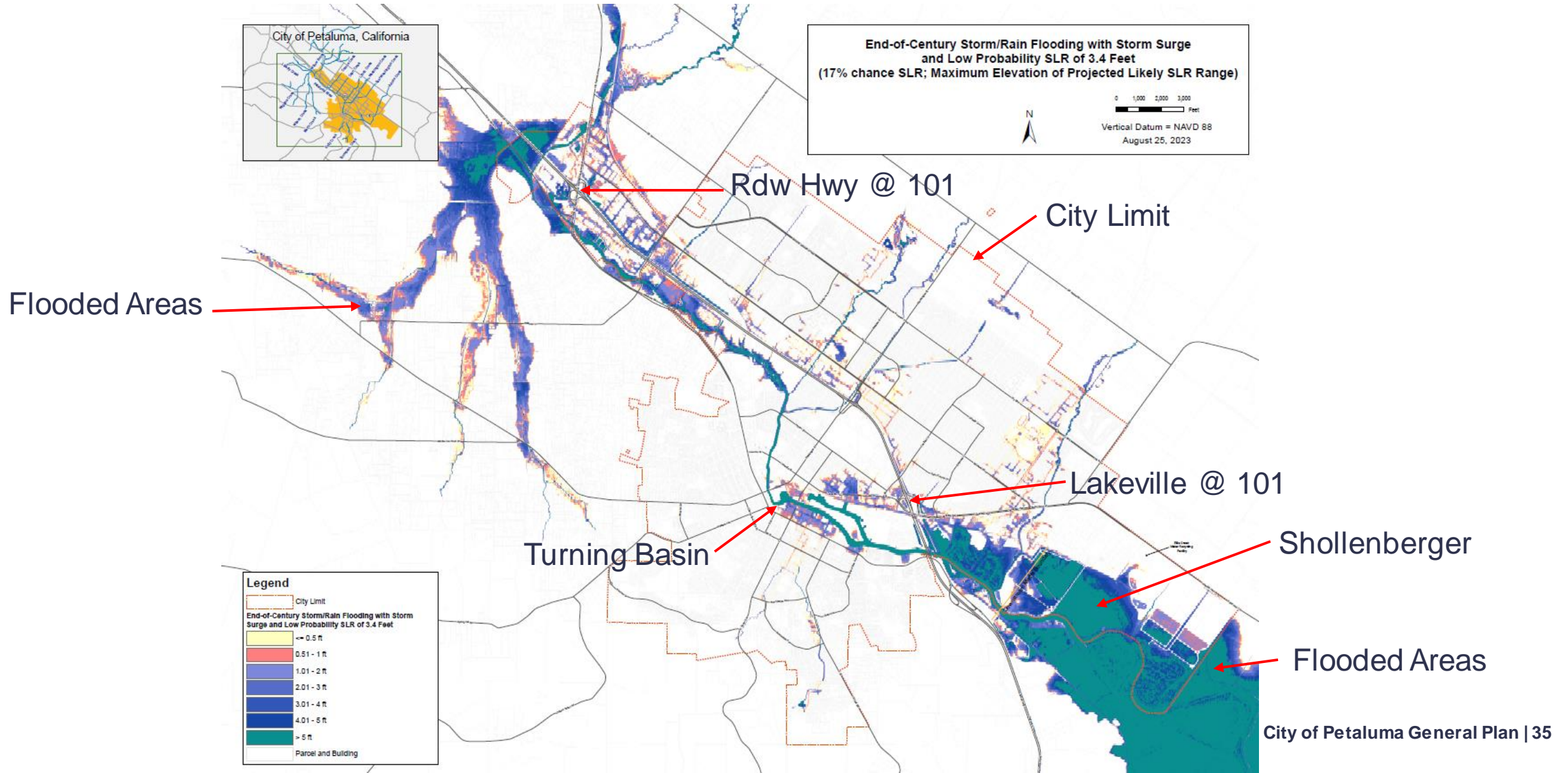




# Mid-Century SLR (1.9 feet), King Tide

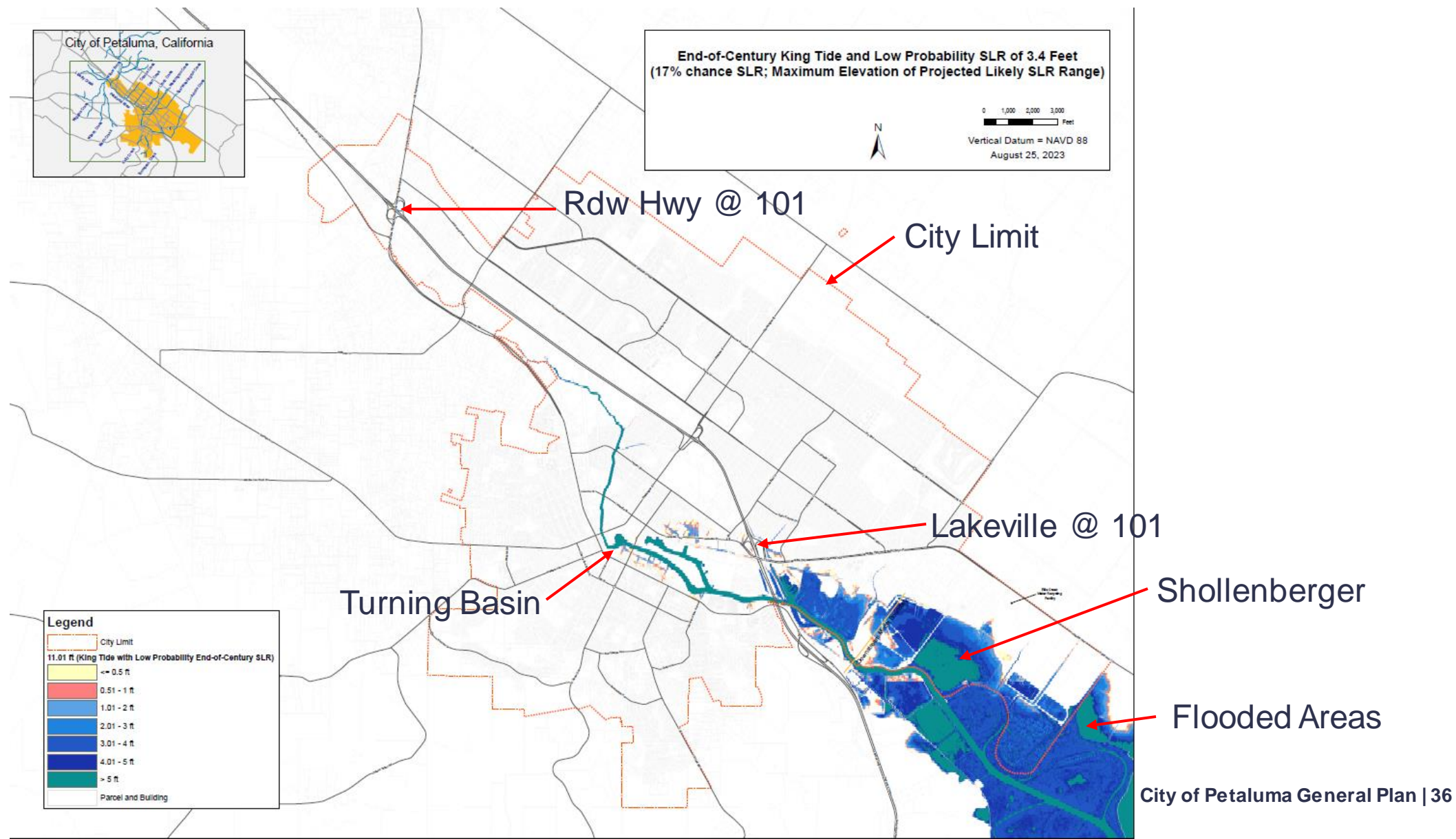


# End-of-Century SLR (3.4 feet), Rain and Storm Surge

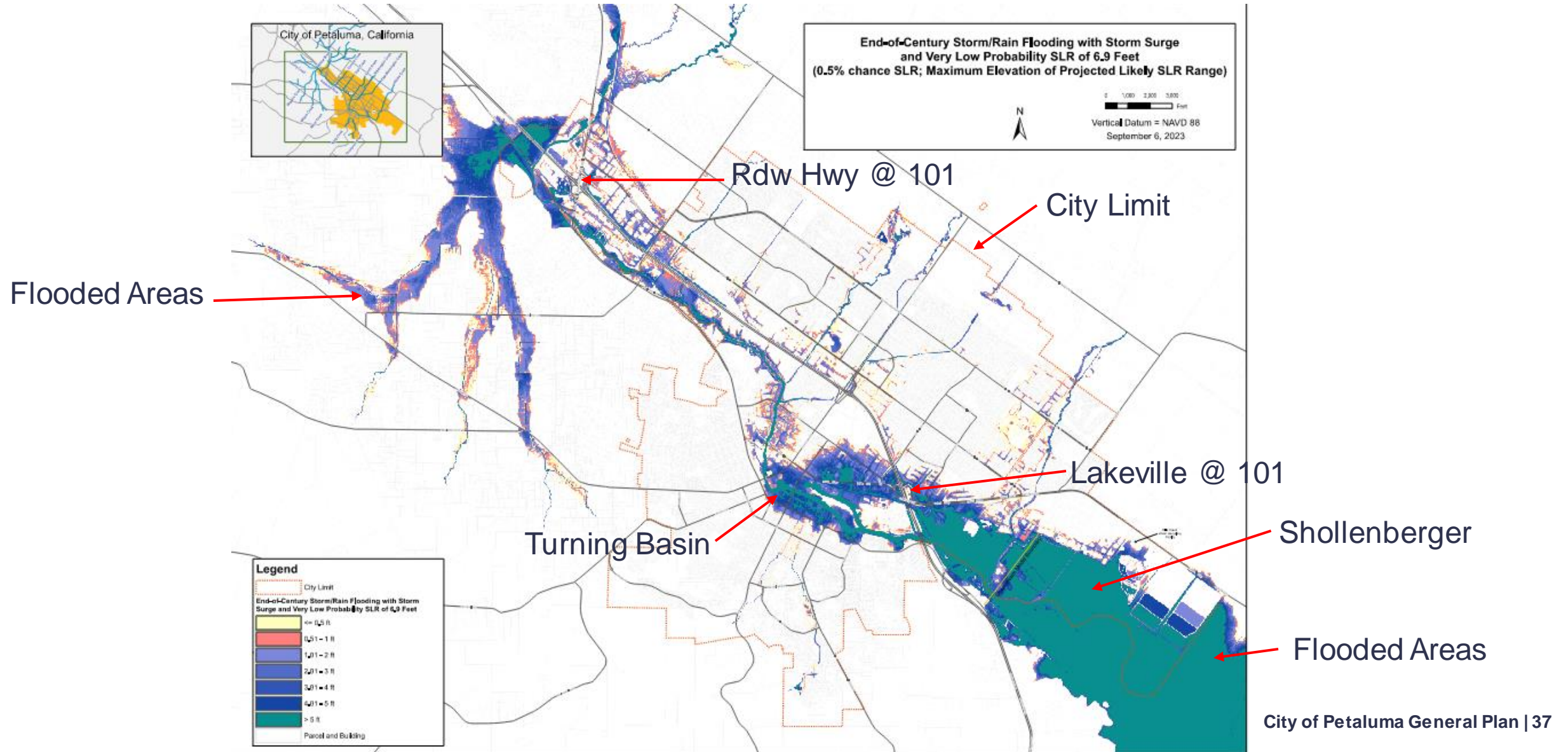




# End-of-Century SLR (3.4 feet), King Tide

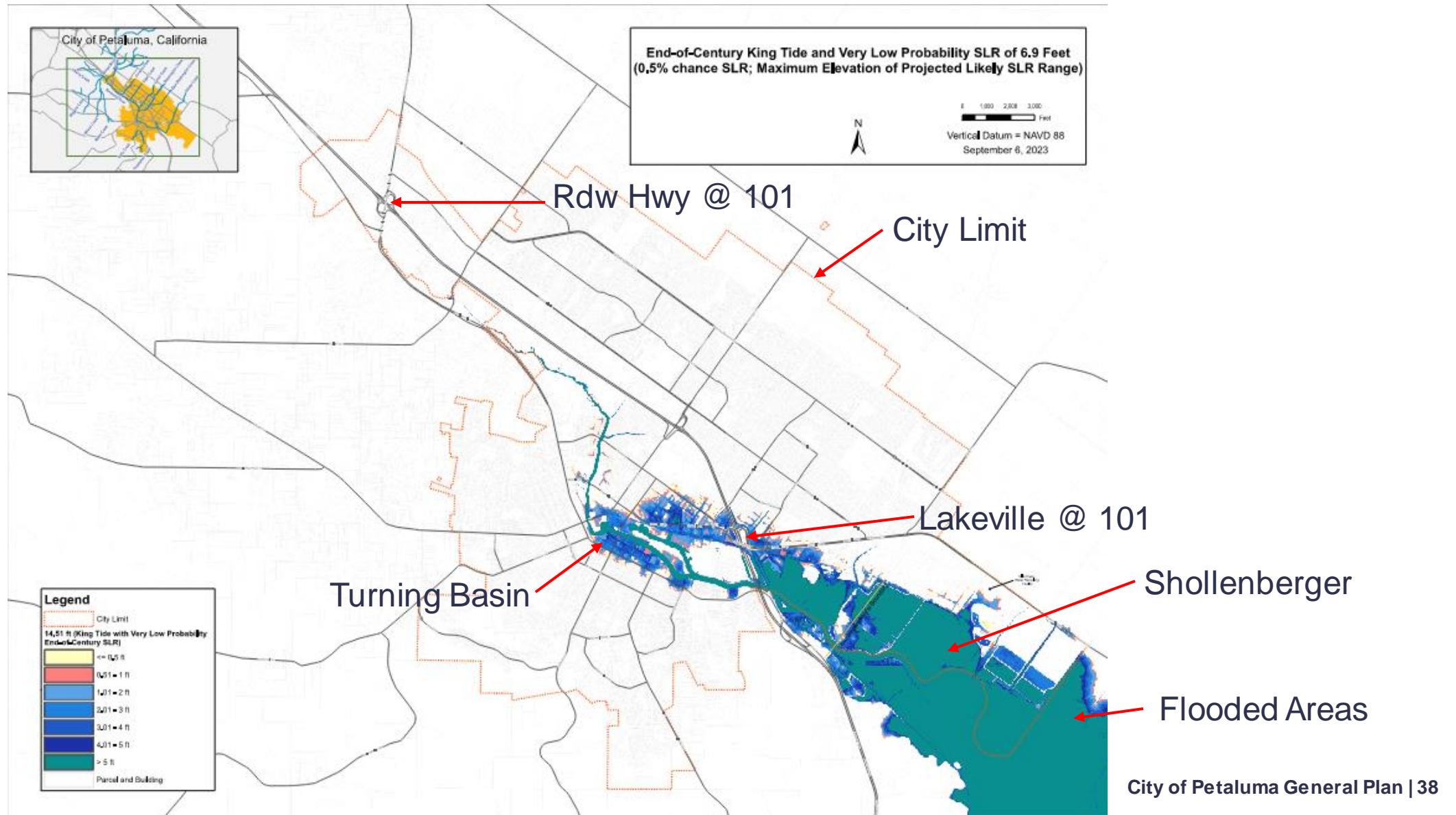


# End-of-Century SLR (6.9 feet), Rain and Storm Surge





# End-of-Century SLR (6.9 feet), King Tide





# Where does SLR affect the City in the Future

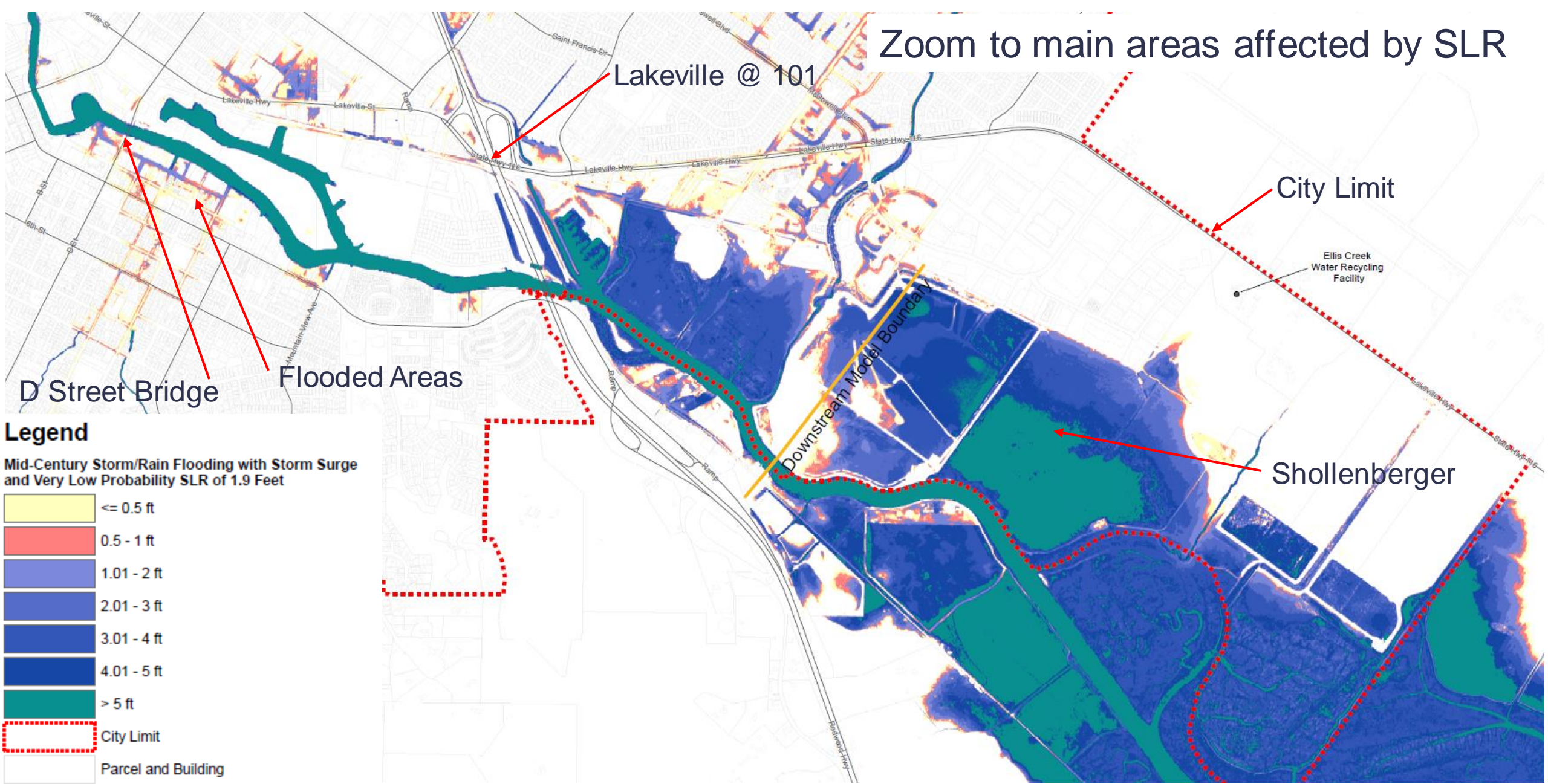
---

Let's zoom in to the same maps



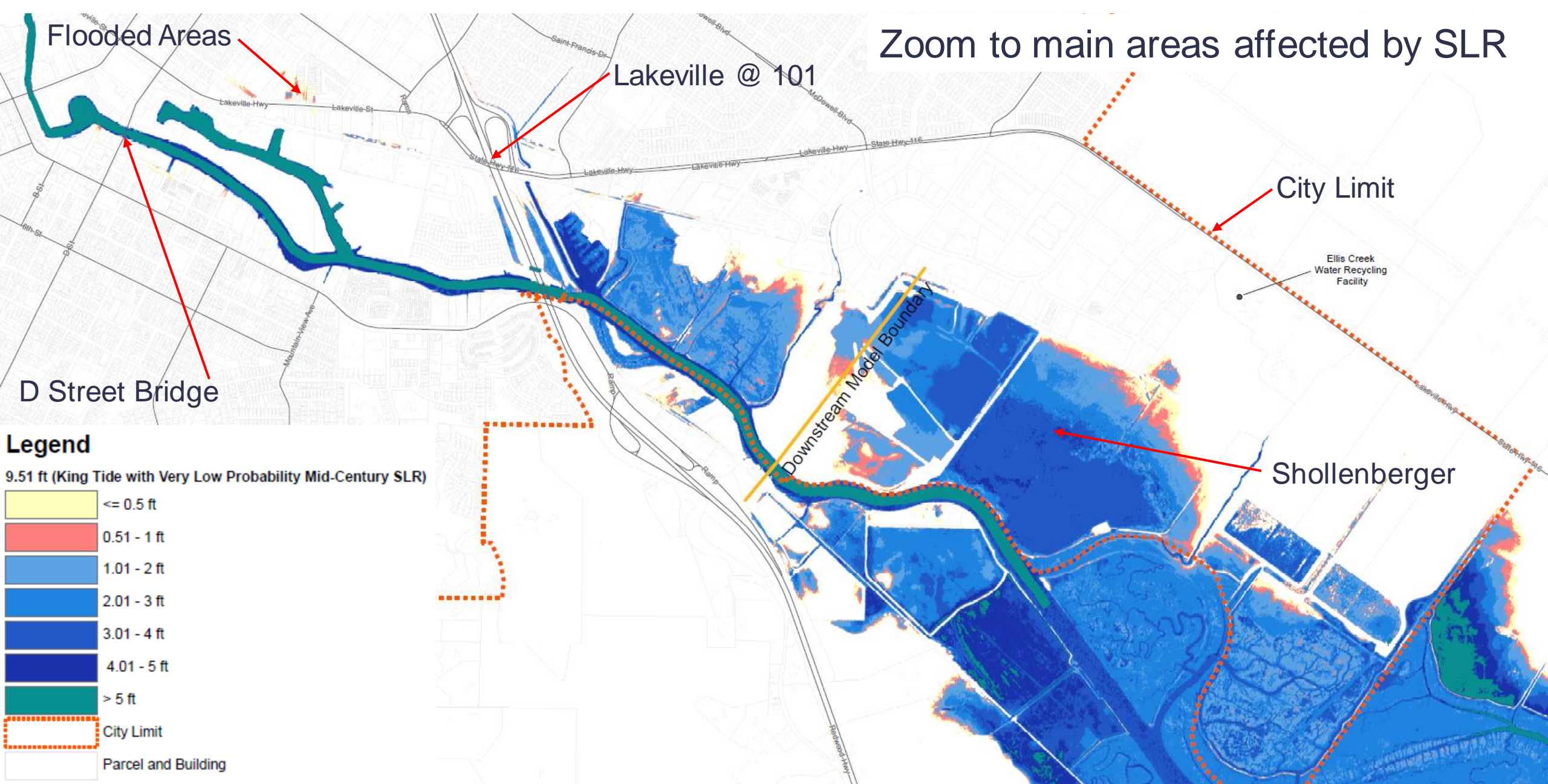


# Mid-Century SLR (1.9 ft), Rain + Storm Surge



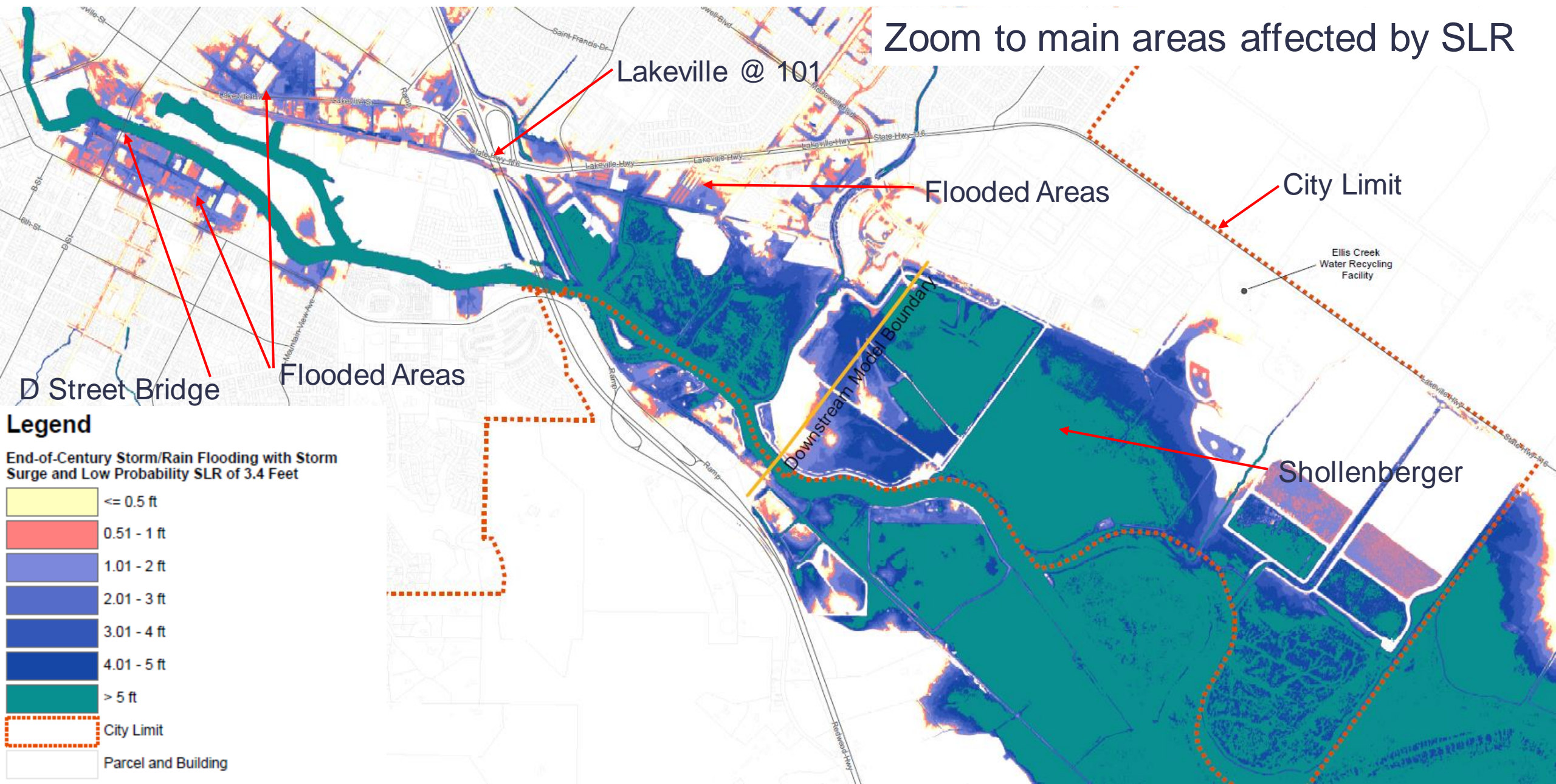


# Mid-Century SLR (1.9 feet), King Tide





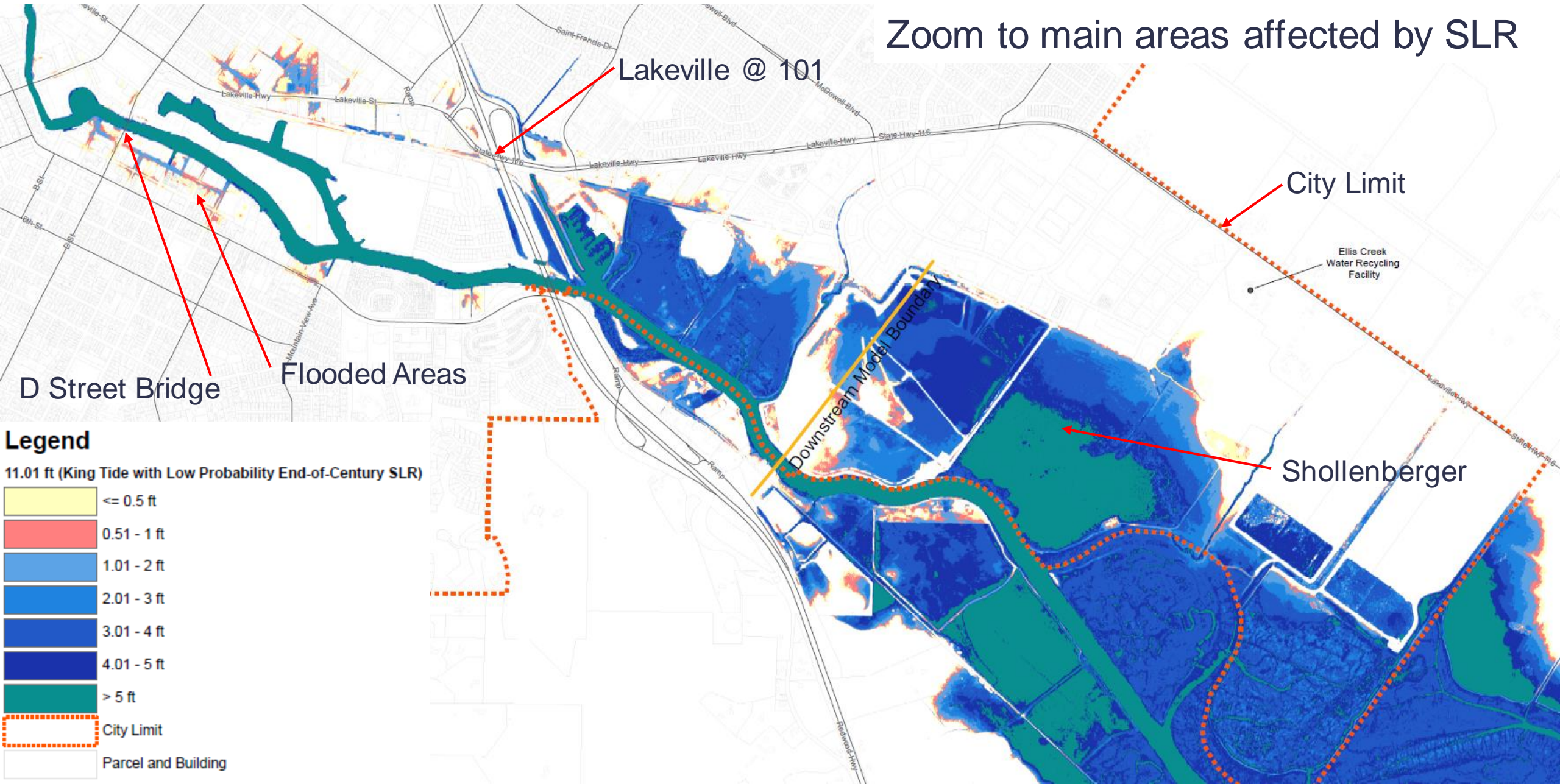
# End-of-Century SLR (3.4 ft), Rain + Storm Surge





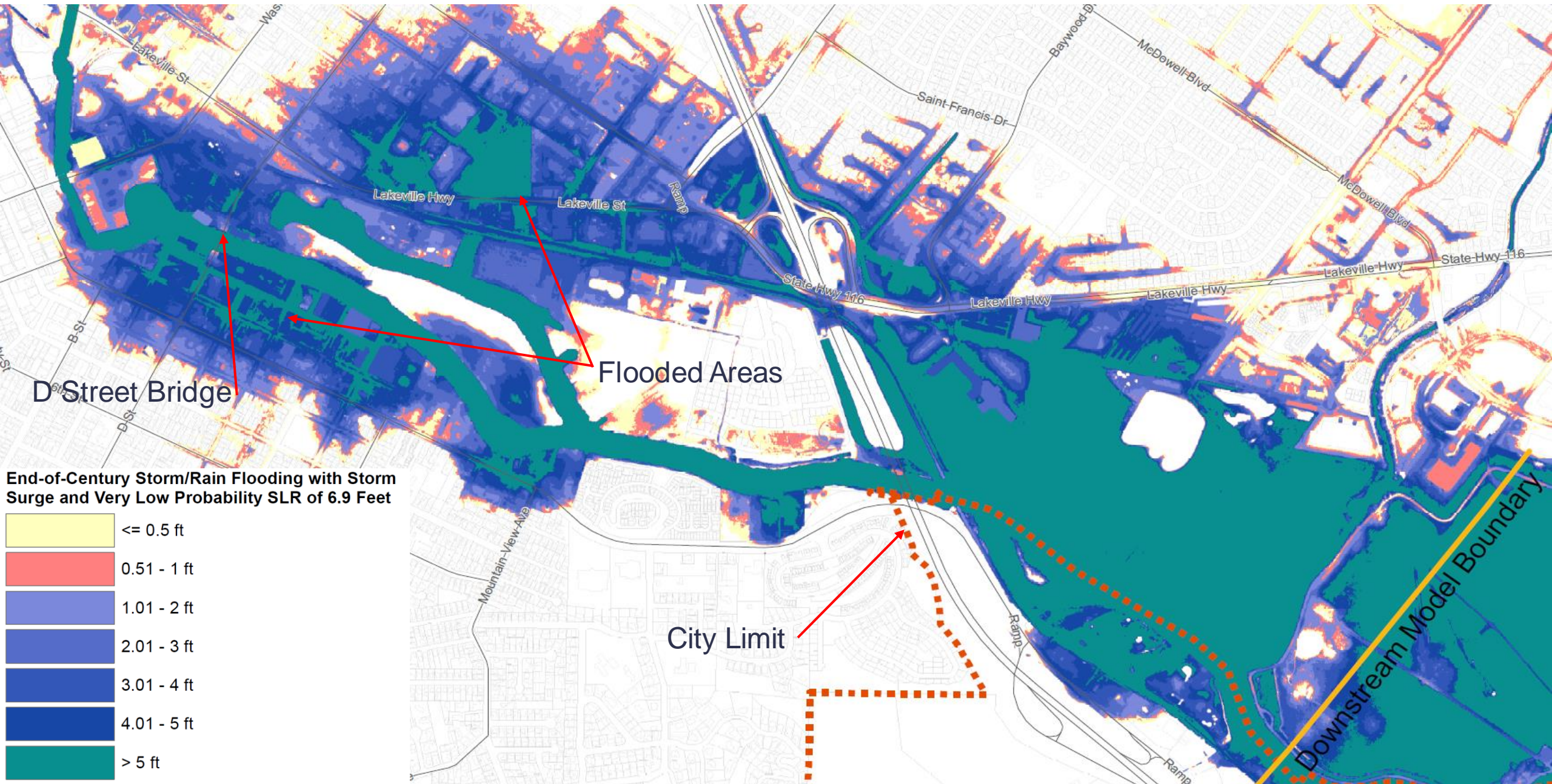
# End-of-Century SLR (3.4 feet), King Tide

Zoom to main areas affected by SLR



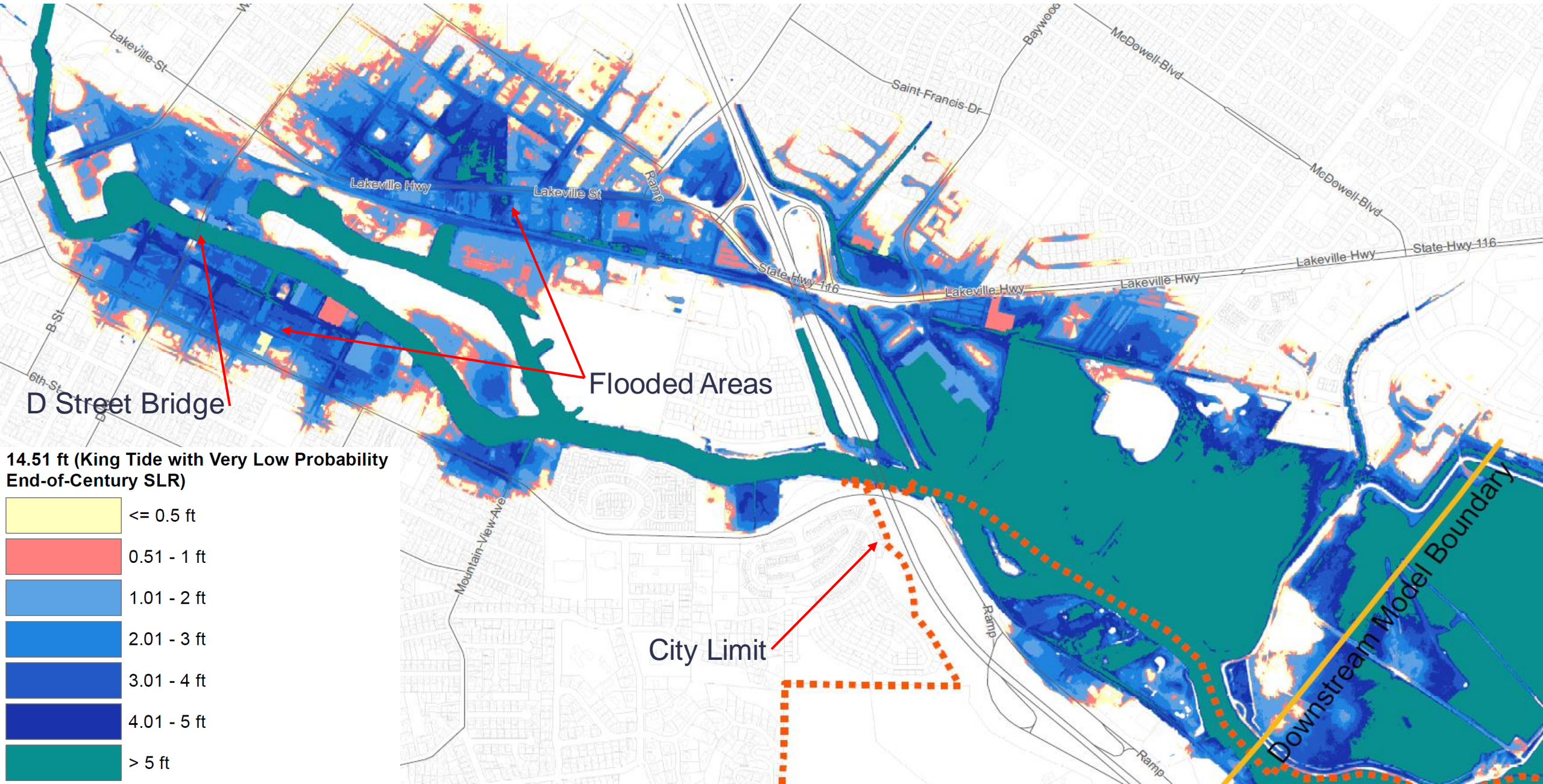


# Very Low Probability, End of Century SLR (6.9'), Storm Surge





# Very Low Probability, End-of-Century SLR (6.9'), King Tide





# Foundations: Community Priorities

## Vision

- **We are prosperous.** Our City infrastructure and facilities are sustainably financed, resilient, and well-maintained.
- **We are forward-thinking leaders.** By achieving carbon neutrality in 2030, we demonstrate that equitable, carbon-neutral, regenerative communities and economies are possible through action and collaboration with other cities, communities, and our region. We have adapted to climate change with a community-driven, whole systems, and nature-based approach to development.

## Pillars

- **Climate Action, Resilience, and Sustainability.** Petaluma is committed to bold action to achieve carbon neutrality by 2030 and to building resilience to climate change impacts, including sea level rise, increasing temperatures, drought, and wildfire intensity. The General Plan must build climate-ready communities using science, technology, and bold ways of thinking to advance change in our relationship with the natural environment and to plan for current and future impacts.

# Foundations: Community Priorities

## Guiding Principles

1. Achieve carbon neutrality by 2030 and equitably foster a **sustainable and resilient community** in which today's needs do not compromise the ability of the community to meet its future needs.
3. **Protect and restore the natural function of the Petaluma River** and its tributaries while expanding complementary recreational, entertainment, and civic opportunities.
13. **Ensure infrastructure supports infill development and addresses the impacts of climate change.**
16. **Be a leader** in advancing these guiding principles within the region and beyond.

# Flood Resilience Goals

Goal FR-1:  
Safe from the  
Current Flood

Goal FR-2:  
Understand the  
Future Flood

Goal FR-3:  
Flood  
Adaptation  
Master Plan

Goal FR-4:  
Prepared for  
Flood Recovery

Goal FR-5:  
Future Looking  
Plans and  
Regulations

Goal FR-6:  
Safe Against  
Rising Floods

Goal FR-7:  
Empowered  
Stakeholders

# Flood Resilience Goals

Goal FR-1: Safe from the current flood

**Policy Areas  
FR-1.1:**

Understand the current flood conditions

**Policy Areas  
FR-1.2 &  
FR-1.3:**

Exceed FEMA standards  
Reduce current risk

Goal FR-2: Understand the Future Flood

**Policy Area  
FR-2.1:**

Track climate change impacts

**Policy Area  
FR-2.2:**

Model future floods

Goal FR-3: Flood Adaptation Master Plan

**Policy Area  
FR-3.1**

Develop a Flood Adaptation Master Plan

**Policy Area  
FR-3.2**

Study the impacts of future floods

Goal FR-4: Prepared for Flood Recovery

**Policy Area  
FR-4.1**

Prepare post-disaster plans

Goal FR-5: Future Looking Plans & Regulations

**Policy Area  
FR-5.1**

Update building codes to provide future flood resilience

Goal FR-6: Safe Against Rising Floods

**Policy Area FR-6.1:** Build for long-term flood resilience

**Policy Area FR-6.2:** Develop flood control efforts

**Policy Area FR-6.3:** Identify funding sources

**Policy Area FR-7.1:** Expand public education

**Policy Area FR-7.2:** Partner with regional stakeholders

**Policy Area FR-7.3 and FR-7.4:** Encourage development and community to protectively adapt

Goal FR-7: Empowered Stakeholders



## **Goal FR-1: Safe from the Current Flood**

- Policy FR-1.1: Understand the current flood conditions
- Policy FR-1.2: Exceed FEMA standards
- Policy FR-1.3: Reduce current risk

## **Goal FR-2: Understand the Future Flood**

- Policy FR-2.1: Track climate change impacts
- Policy FR-2.2: Model future floods

## **Goal FR-3: Flood Adaptation Master Plan**

- Policy FR-3.1: Develop a Flood Adaptation Master Plan
- Policy FR-3.2: Study the impacts of future floods

## **Goal FR-4: Prepared for Flood Recovery**

- Policy FR-4.1: Prepare post-disaster plans

# Goal FR-5: Future Looking Plans and Regulations

- Policy FR-5.1: Update building codes to provide future flood resilience

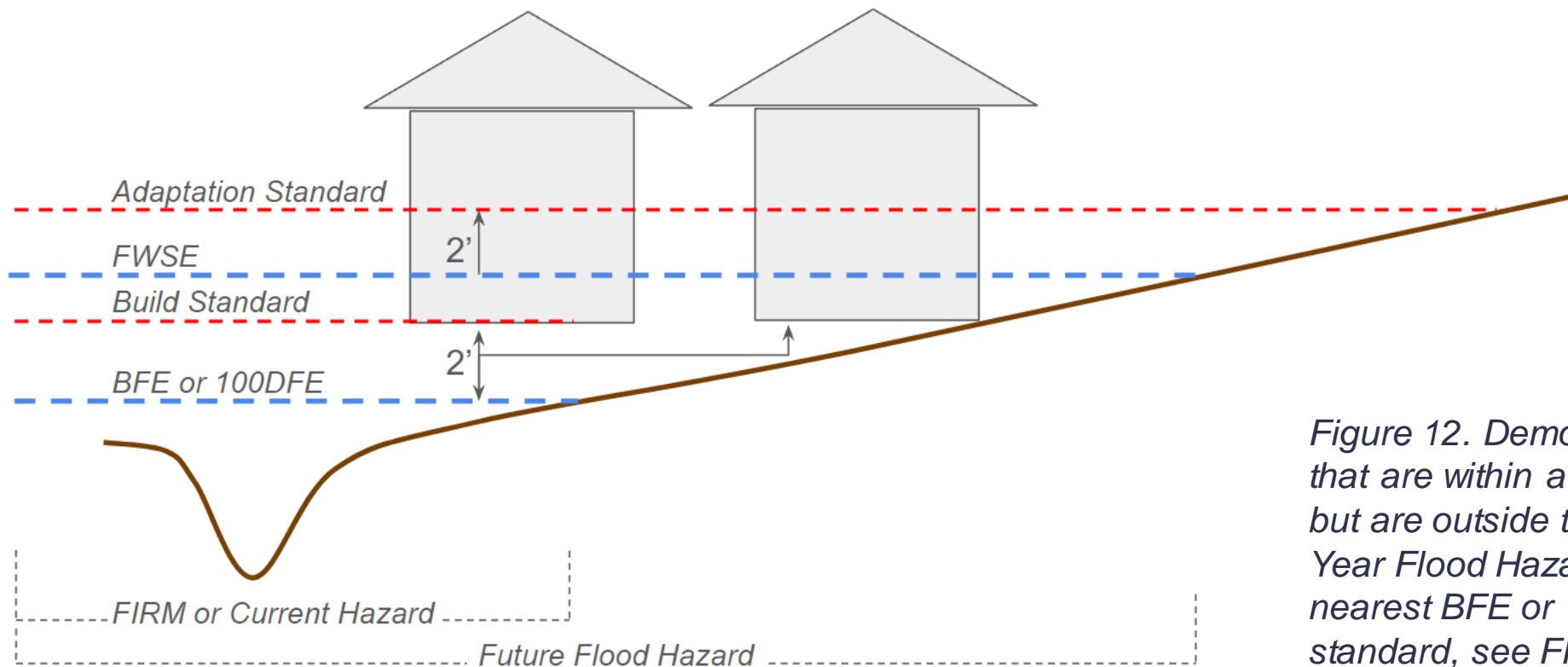


Figure 12. Demonstrating how projects that are within a future flood hazard map but are outside the FIRM or Current 100-Year Flood Hazard Map will reference the nearest BFE or 100DFE to set their FFE standard, see FR-5, General Plan Standards



## **Goal FR-6: Safe Against Rising Floods**

- Policy FR-6.1: Build for long-term flood resilience
- Policy FR-6.2: Develop flood control efforts
- Policy FR-6.3: Identify funding sources

## **Goal FR-7: Empowered Stakeholders**

- Policy FR-7.1: Expand public education
- Policy FR-7.2: Partner with regional stakeholders
- Policy FR-7.3: Promote proactive adaptation
- Policy FR-7.4: Support community efforts

# Questions & Comments

# What feedback to you have?

## Considering your technical expertise...

- What are the **most important** policies in each framework?
  - We recommend identifying the top 5 (or fewer) policies and ranking them in order of importance.
- What **concerns** do you have about the policies in each framework?
  - For example, are they unclear? Should they be softened or strengthened? Do you disagree with the policy direction?



A photograph of a street corner in Petaluma, California. The scene features historic buildings, including a prominent red brick building with white trim and arched windows. A street sign for 'Kentucky St' is visible. A large, white, bold text overlay reads 'Thank you!'. The street is lined with parked cars, and a traffic light is visible. The sky is overcast.

# Thank you!