

Lucchesi Skatepark Project

PETALUMA CITY COUNCIL PRESENTATION – JANUARY 6, 2025

Presentation Overview

Project Summary and Timeline

Design Overview

What's Next

Integrating Public Art

Tree Plantings

Sports Lighting

Restroom Improvements

Community Engagement and Design

Community
Workshop #1

Jan.
'23

Recreation,
Music, & Parks
Commission

Mar.
'23

Community
Workshops
#3 & 4:

Summer
'23

City Council:
Approval of
concept plan

May
'24

Dec.
'22

Feb.
'23

Apr.
'23

Oct.
'23

Neighborhood
Meeting

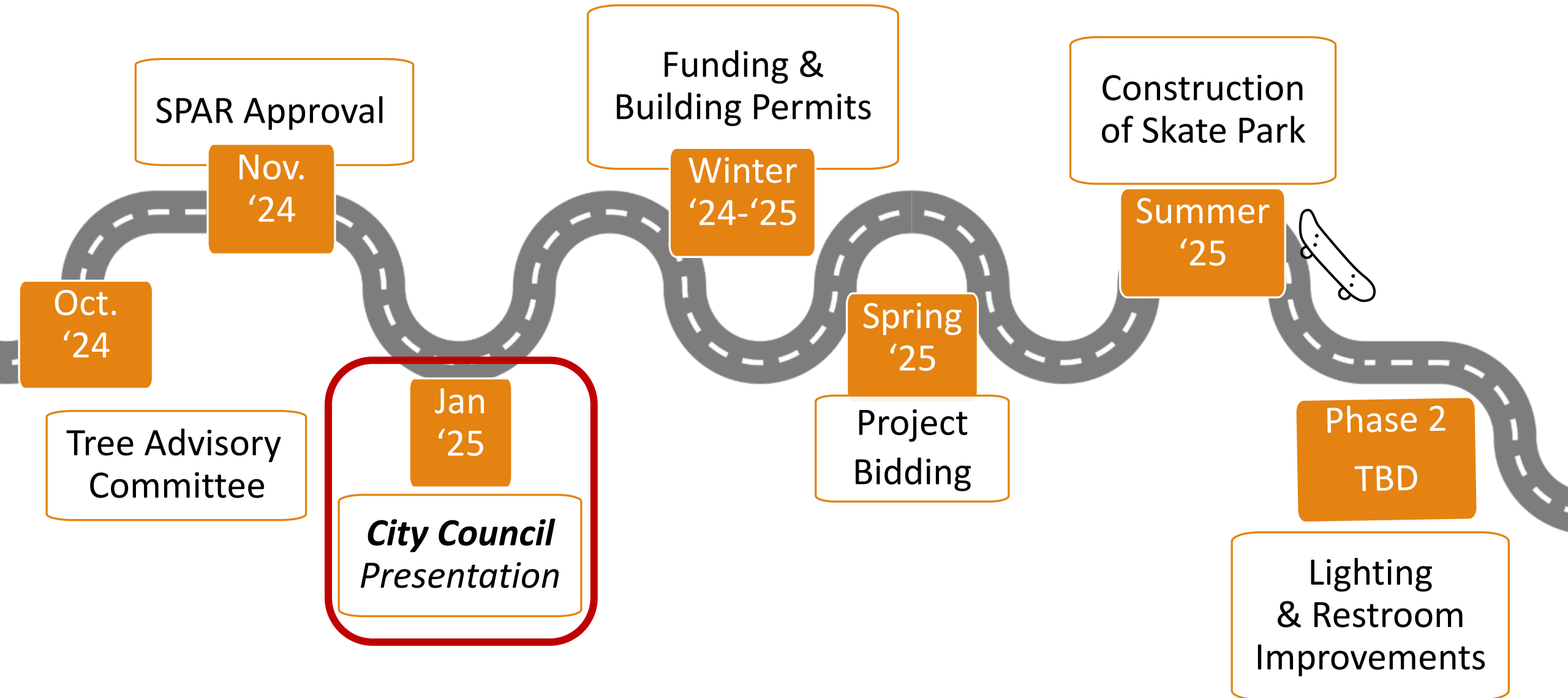
Partner with
Grindline Inc.

Community
Workshop #2

City Council:
Site selection

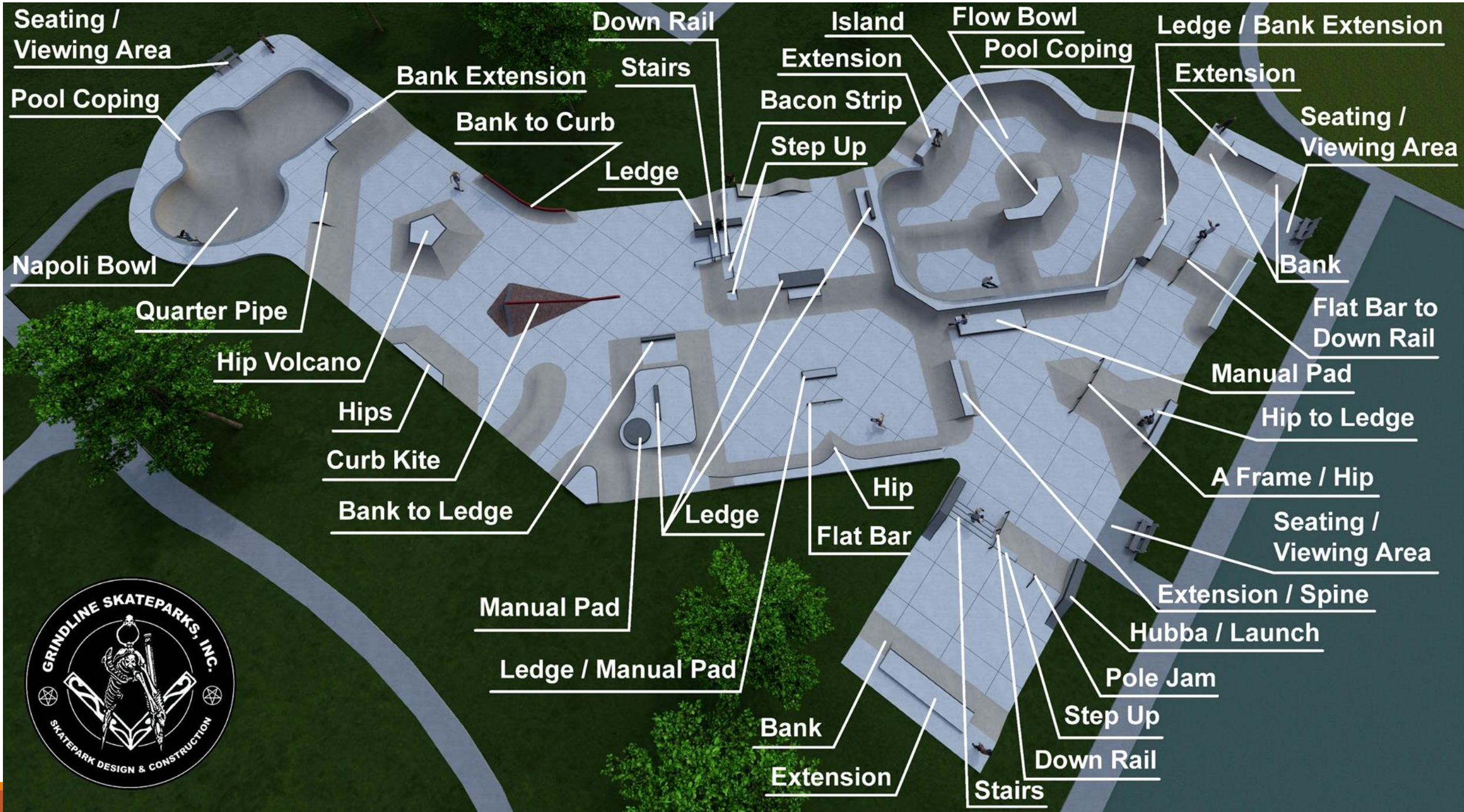
Engineering Design Phase

Construction

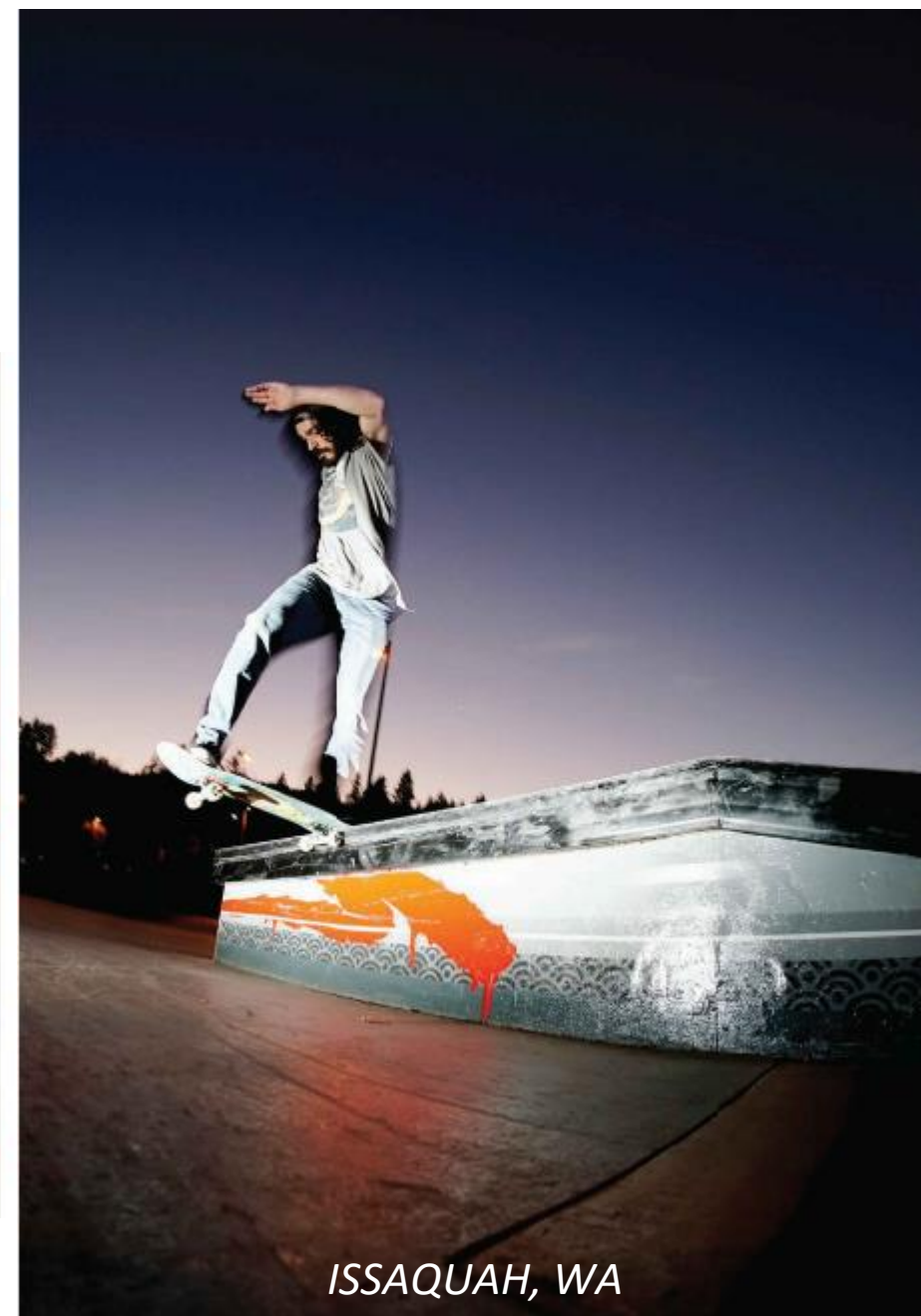
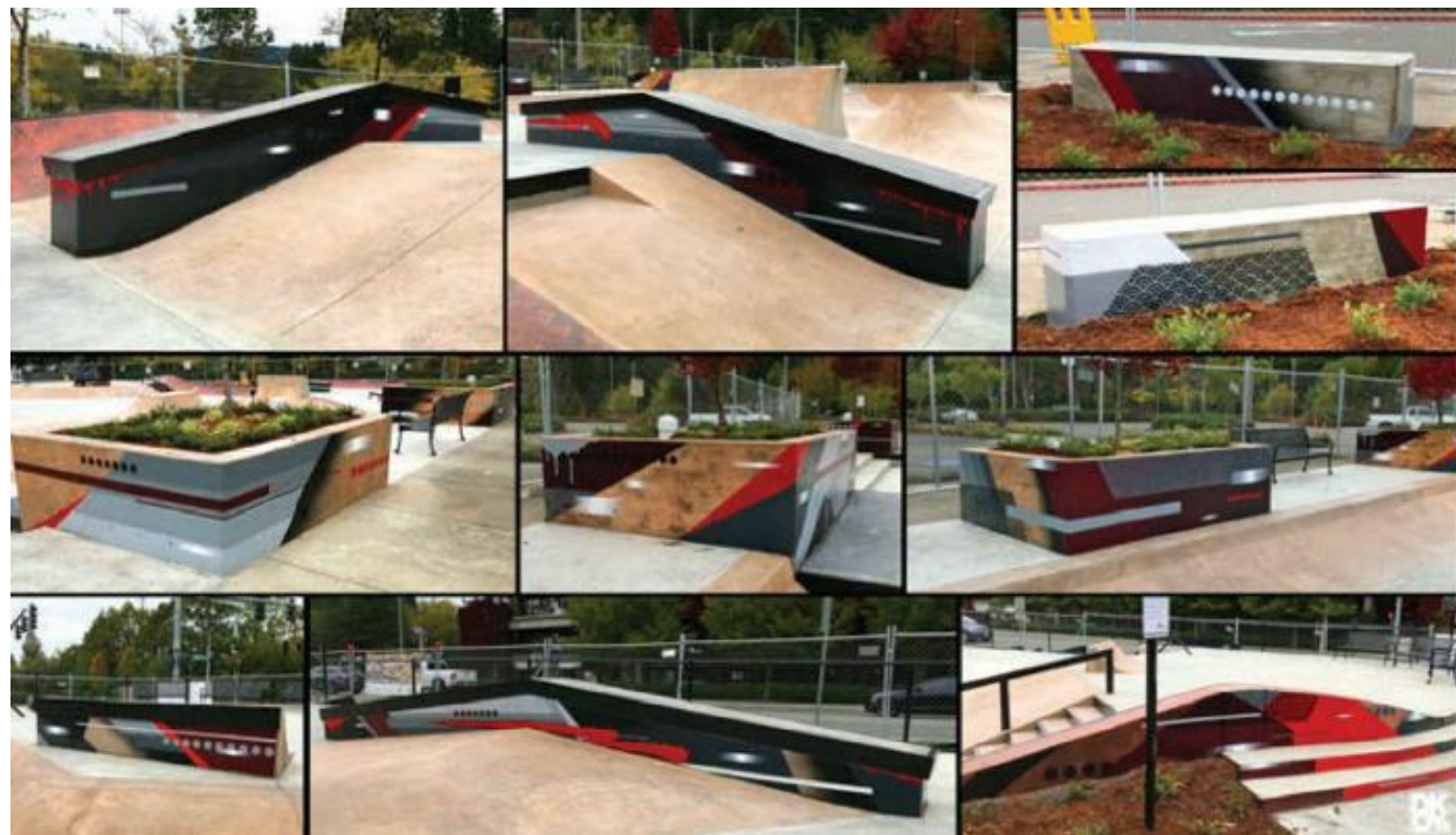








Public Art Examples



ISSAQUAH, WA





Public Art Process

Albion Park

RFQ

Artists to
Apply



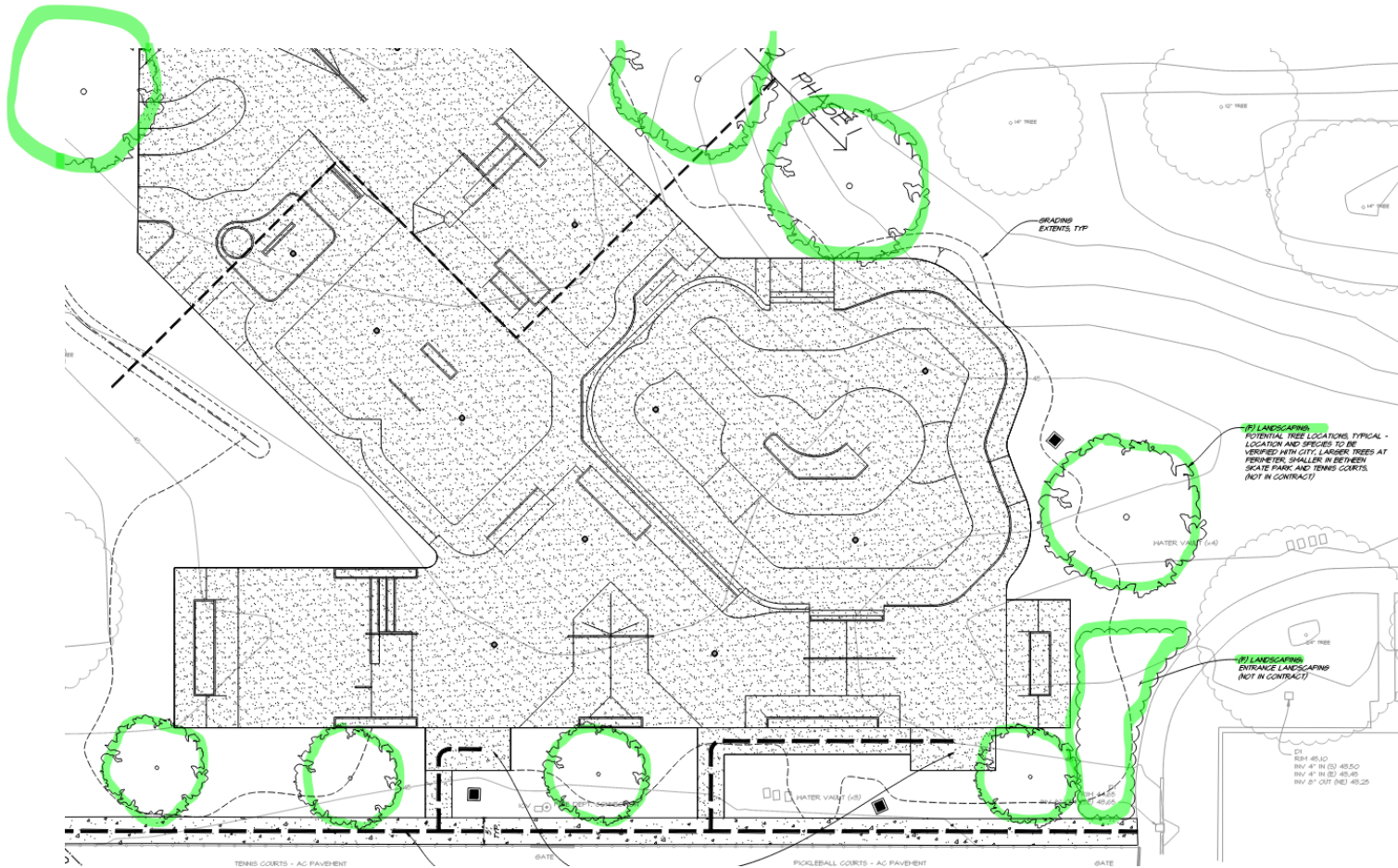
Artist
Selection



Public Art
Committee
Design
Review



Installation
Following
Skatepark
Construction



Tree Plantings and Landscaping

- Additional tree planting and low-level planting areas between paved paths.
- New irrigation systems designed for future conversion of the park to Recycled Water.

Sports Lighting

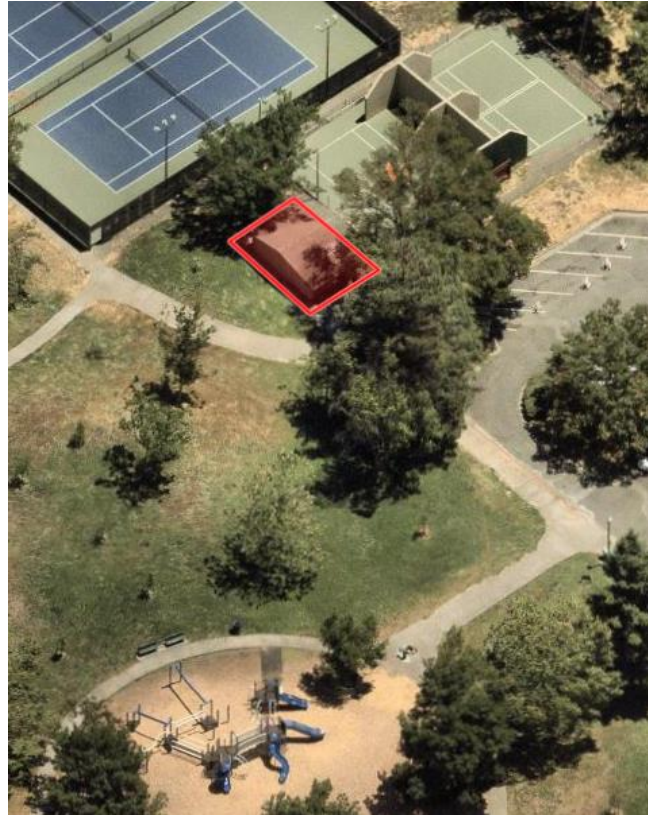


- Integrate Lighting with existing uses at Park
- Increases Safety
- Extends Hours of Operation

Phase 1 – Includes subsurface improvements, such as conduit installation, etc.

Phase 2 – Electrical panel upgrades, pole installation, and lighting installation when funding becomes available

Existing Lucchesi Park Restroom



- Built in 1977, currently in poor condition
- Two gendered halves, single toilet
- Open stalls, poor privacy
- Accessibility challenges with retrofitting
- Roof replacement needed
- Patchwork of utility repairs

Increase in active park use since 1977

Project requires two additional bathroom stalls, and accessibility compliance.

Proposed Restroom



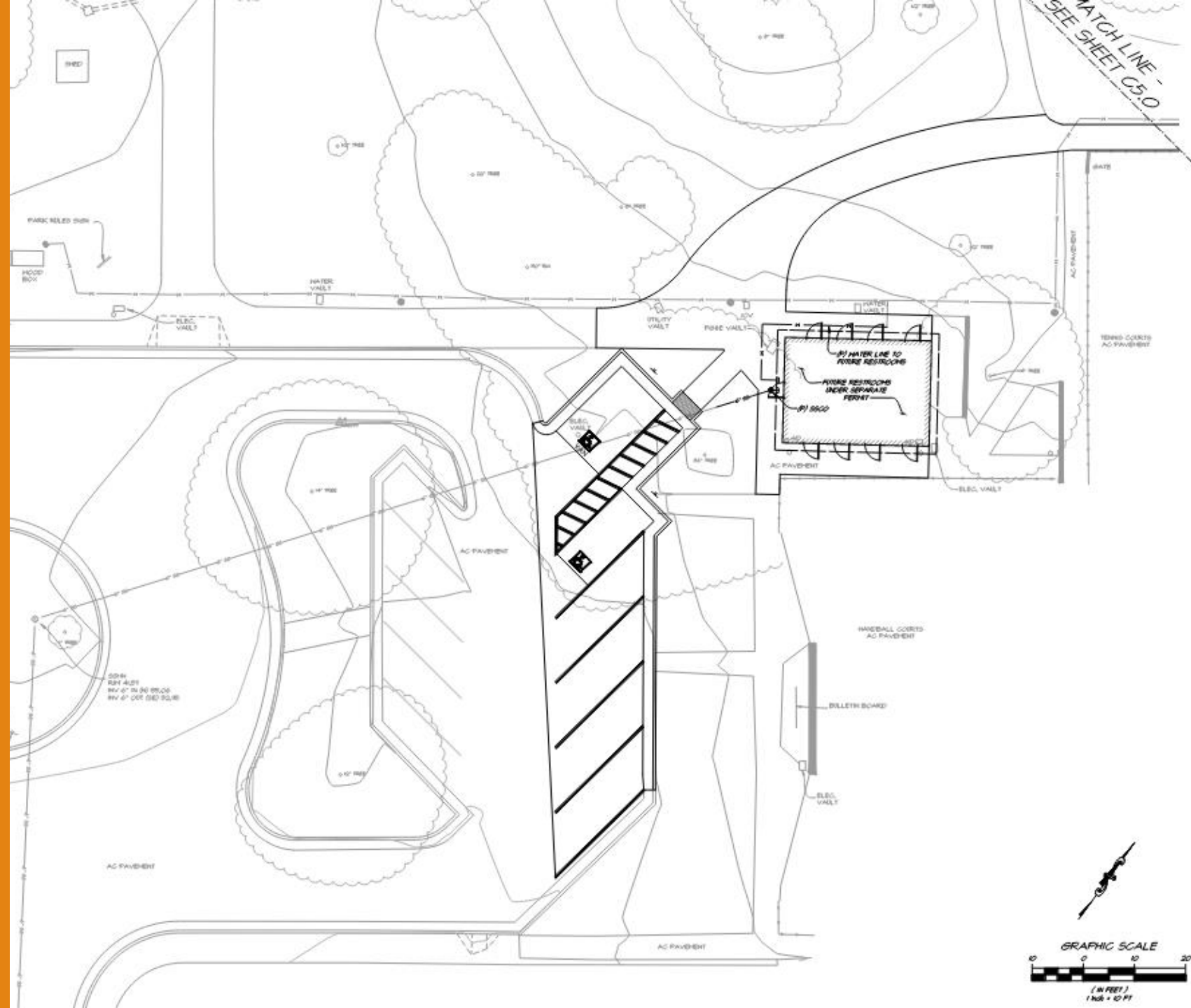
Example Building

**example only actual materials finishes TBD*

Recommended Replacement of Lucchesi Park Restroom at Novak Drive

- New – Individual 6 Stalls
- All Gender
- Accommodates Expansion of Use
- Integrated drinking fountain/bottle fill station
- Dual-plumbed for future connection to recycled water system

Accessible Parking



Timeline and Funding

Phase 1

Spring 2025

- Project Bidding

Summer 2025

- Groundwork and Skate Park
Single-phased construction for skating area

Fall 2025

- Public Art Installation
- Landscaping Installation

Phase 2

Timeline To Be Determined – Funding Dependent

- Sports Lighting Installation
- Restroom Installation
- Accessible Parking Construction and Improvements

Timeline and Funding

Project Estimate

Design & Soft Costs:	\$ 715,000
Phase 1:	\$3,035,000
Phase 2:	\$1,100,000

Funding Sources*

Parkland Impact Fees	\$1,175,000
Virginia Craig Trust	\$ 532,000
Measure M – Parks	\$ 450,000
ARPA	\$ 313,000
Prop 68	\$ 216,000
General Fund – Meas. U	\$ 525,000
Transient Occupancy Tax	\$ 537,000
<i>Undetermined (Phase 2)</i>	<i>\$1,102,000</i>

*pending FY 25/26 budget approval

Learn More &
Subscribe to
Project Updates!

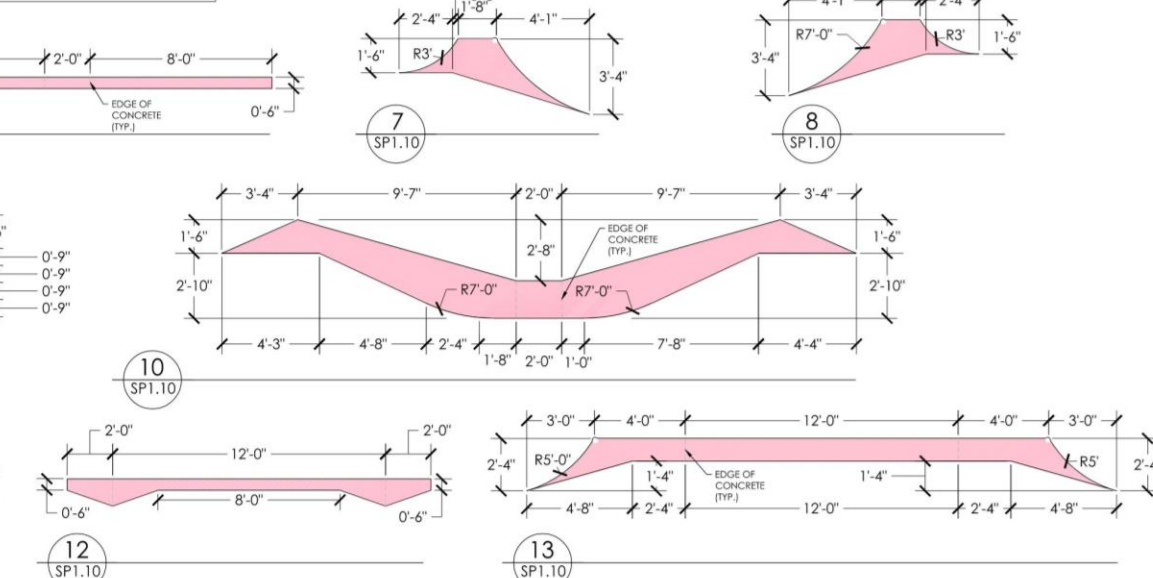
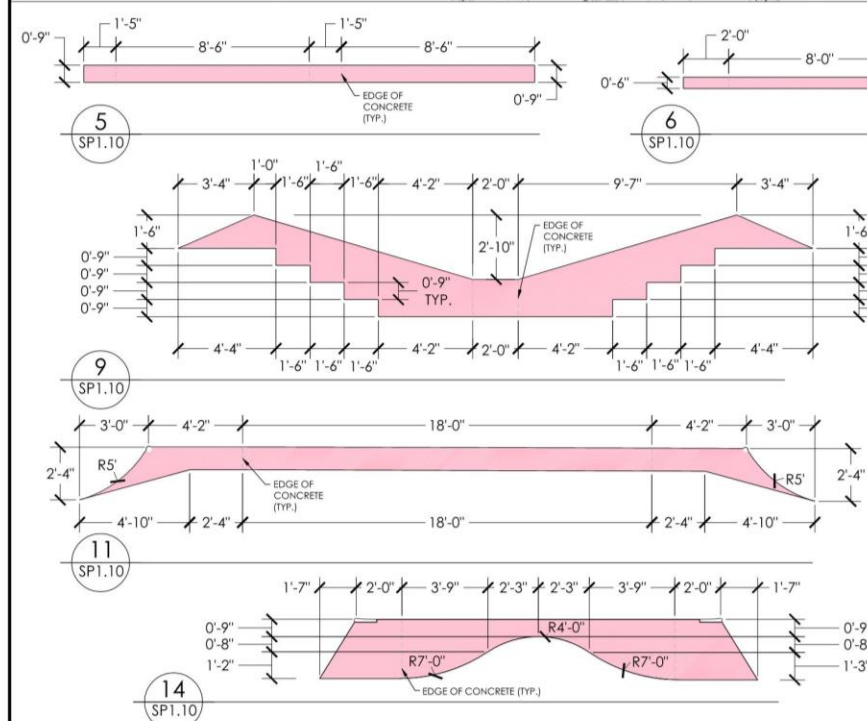
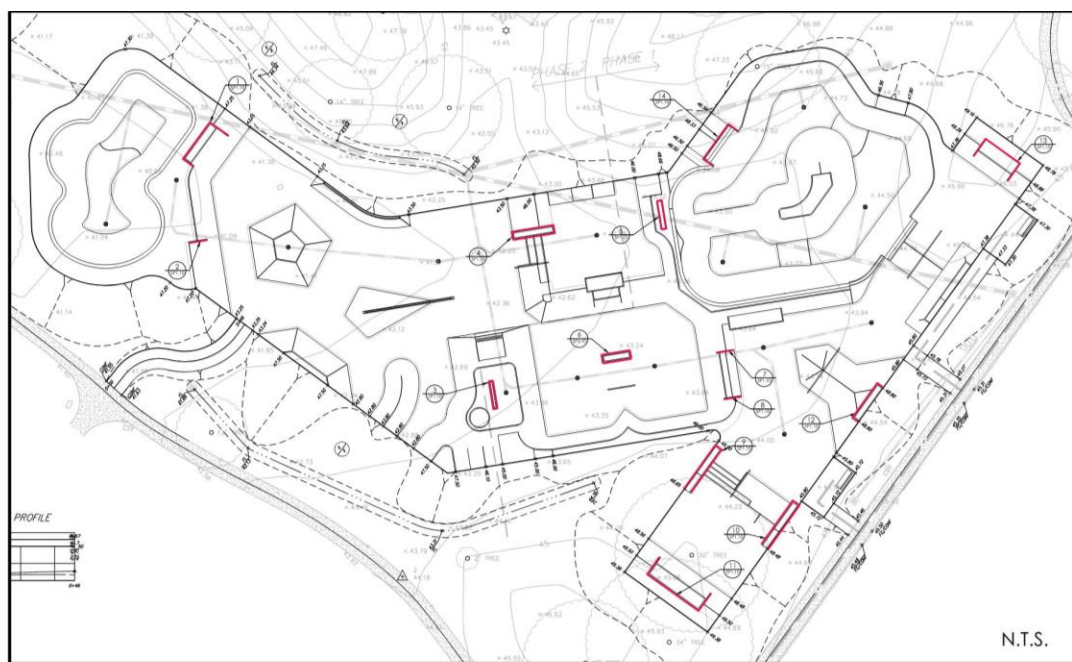


cityofpetaluma.org/skatepetaluma

Josh Minshall, Project Manager

jminshall@cityofpetaluma.org

Appendix – Reference Slides



Vertical Surfaces for Art

NOTE: ART TO BE DONE BY OTHERS



BRAINLINE
CONCRETE SKATEPARK DESIGN & CONSTRUCTION
4619 14th Ave SW
P: 206.975.6141 F: 206.975.6840
www.brainline.com

SCALE: 1" = 3'	ART LOCATIONS	SHEET: SP1.10
	PROJECT: LUCCHESI PARK SKATEPARK	DATE: 12.16.24
	LOCATION: PETALUMA, CA	DRAWN BY: JRL CHECKED BY: MBF

This design is an instrument of professional service and is the property of Brainline Skateparks Inc. Any use of these plans shall be restricted to the project for which they were prepared.



Additional Public Art Examples



Additional Public Art Examples



Additional Public Art Examples





