

Staff Updates

MARCH 6, 2024

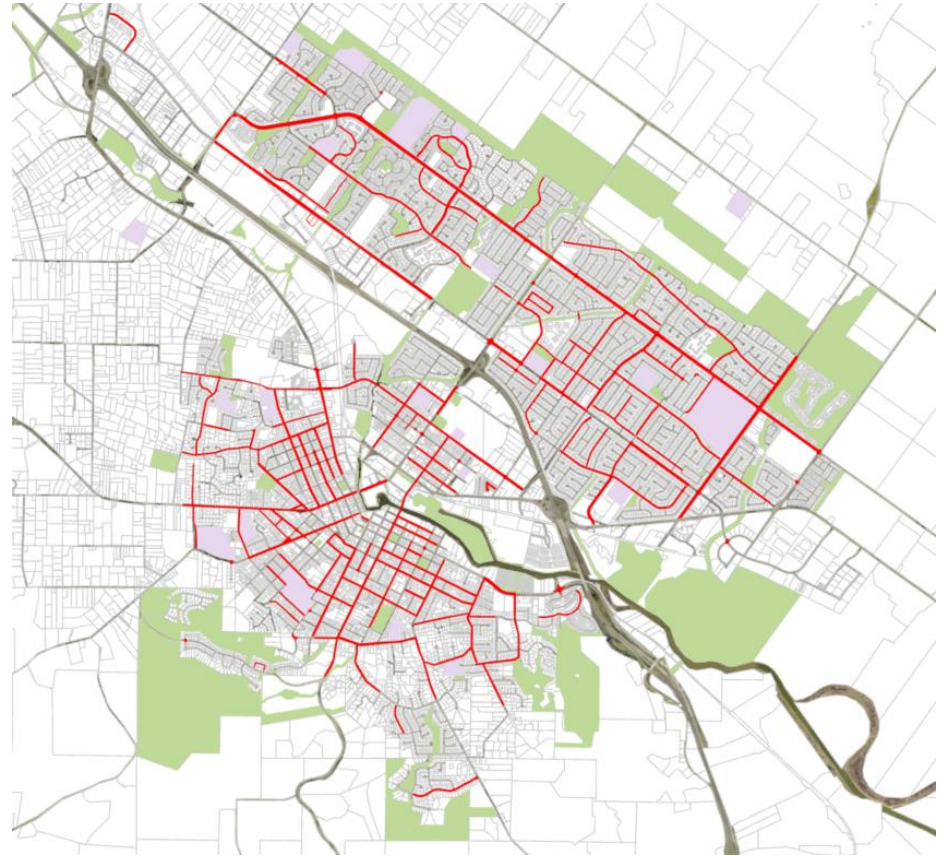


Capital Plan/Project Updates

- **Active Transportation Plan:** Draft Plan under development (next step: Committee/Commission reviews)
- **Maria Drive Improvements:** Construction to begin in late April
- **D Street Traffic Calming & 5th Street Neighborhood Greenway:** City Council presentation planned for April along with On-Call Striping Contract bid award
- **Lynch Creek Trail Improvements:** Bid opening planned for May

Safe Streets Nomination Program

- 537 nominations received (236 unique locations mapped within City limits)
- Updated scoring criteria to account for high volume of submissions:
 - Injury collisions only; more points for higher severity
 - Not using speed data
 - Proximity to schools and parks

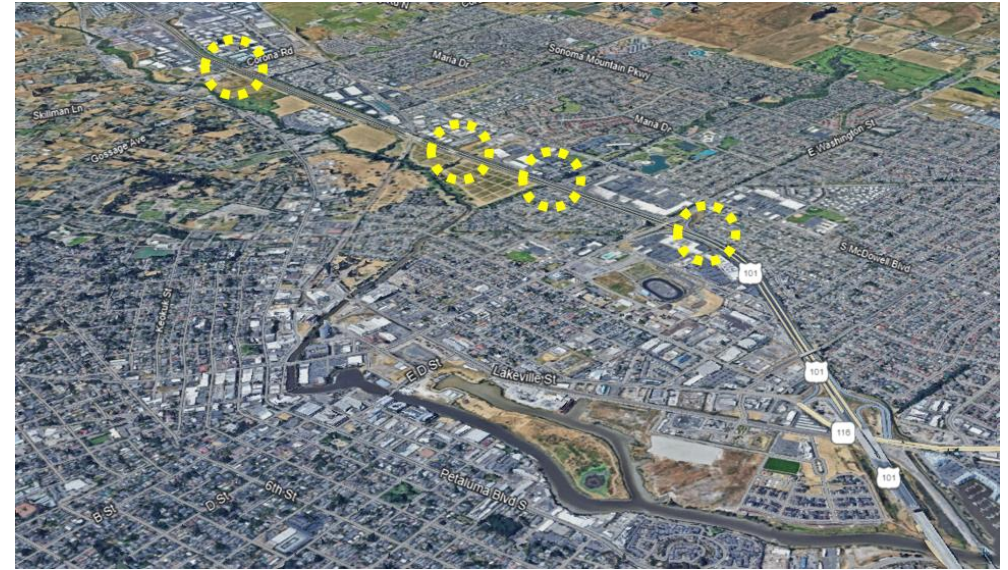


Upcoming Meetings, Events & Deadlines

- March 17: 101 Crossings Study survey closes
- March 21: Safe Routes to School Task Force (Loma Vista)

101 Crossings Study

- Focused on Corona Road, Rainier Avenue, Lynch Creek Trail, and McKenzie Avenue
- Identify opportunities/constraints and develop near and long-term recommendations
- Held Open House on February 29; presentation slides posted to project webpage
- Survey open until March 17
- cityofpetaluma.org/101crossings



Safe Routes to School Task Force

Complete:

- McDowell
- McKinley/Live Oak
- Petaluma HS

Upcoming:

- March: Loma Vista
- April: La Tercera
- May: Miwok
- June: Casa Grande HS



Safe Routes to School Task Force

- Meets third Thursday of the month at 4 PM
- All remaining meetings for 2023-24 school year to be held at Community Center
- For agendas and notes, go to sonomasaferoutes.org/content/petaluma-safe-routes-school-task-force



Upcoming Agenda Items (Tentative; Subject to Change)

- Active Transportation Plan
- Slow the Fast Down Campaign
- 101 Crossing Study (Corona, Rainier, Lynch Creek Trail, McKenzie)
- Sonoma-Marín Bike Share
- Vision Zero Update
- Wayfinding Update
- Communications Ad Hoc Committee Presentation
- Upper Petaluma River Trail