



Howard Street Improvements Project

PEDESTRIAN & BICYCLE ADVISORY COMMITTEE – MARCH 6, 2024

Agenda

- Project Overview & Existing Conditions
- What We've Heard (Sept '23 Workshop & Survey)
- Proposed Improvements
- Questions & Comments
- Next Steps





Project Overview

Project Location

1. Howard Street – West Street to A Street (UTILITIES & ROAD RECONSTRUCTION)

- 2. Galland Street – Howard to Central Ave*
- 3. Walnut Street – Galland Street to Oak Street*
- 4. Harris Street – Howard Street to Post Street*
- 5. Post Street – Stanley Street to Western Ave*
- 6. High Street – Stanley Street to end of cul-de-sac*

*Utilities only



Project Overview

- **Replace undersized and aging utilities**
- Reconstruct roadway
- Improve safety and accessibility



Project Overview

- Replace undersized and aging utilities
- **Reconstruct roadway**
- Improve safety and accessibility



Project Overview

- Replace undersized and aging utilities
- Reconstruct roadway
- **Improve safety and accessibility**



Existing Conditions



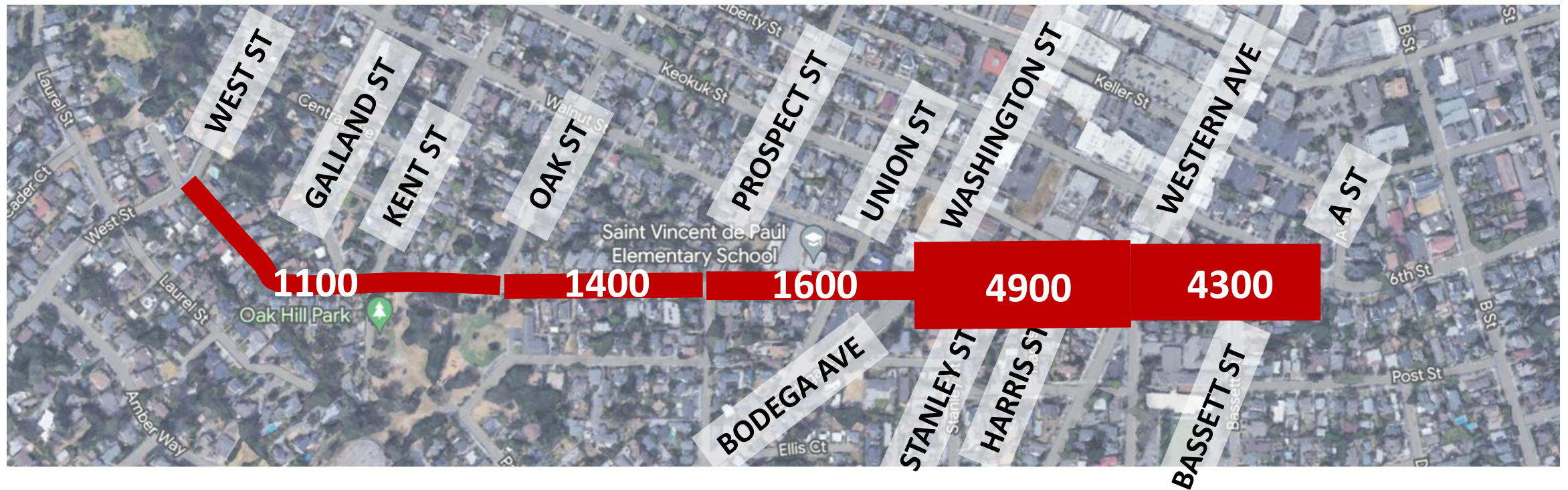
Existing Conditions



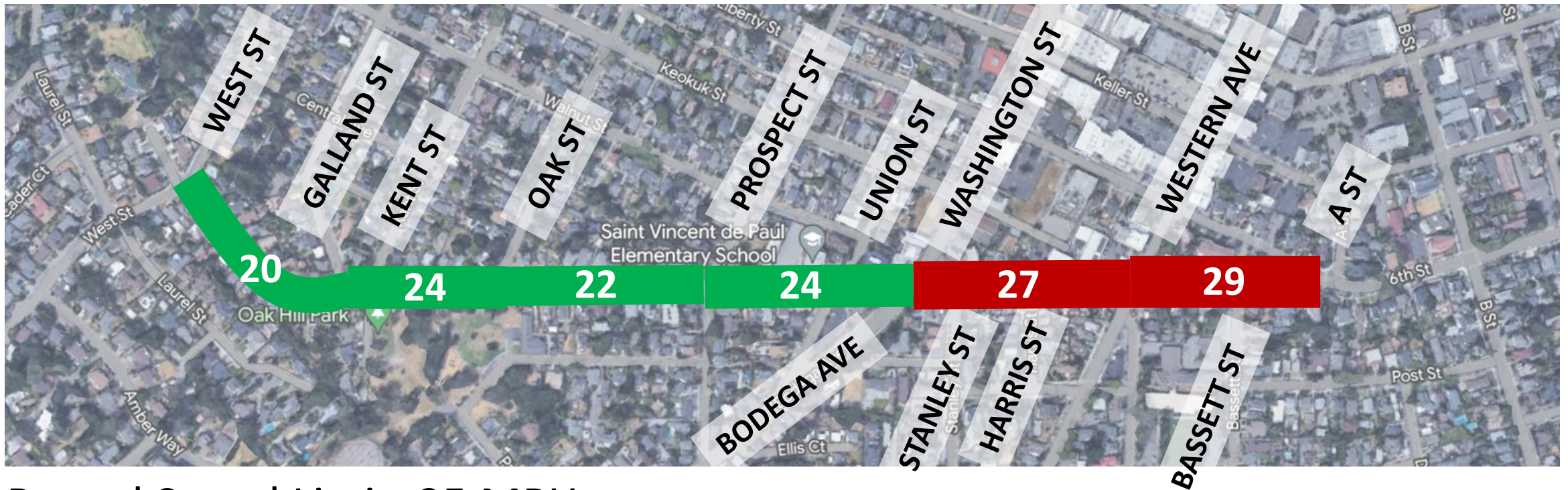
Existing Conditions



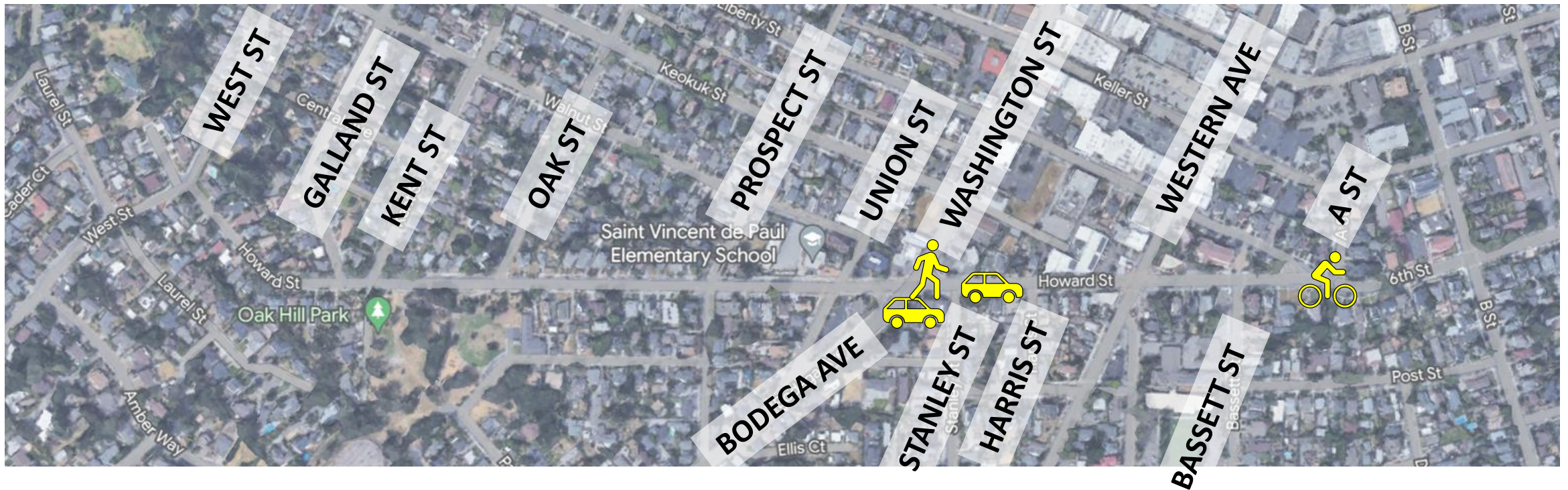
Vehicles Per Day



Vehicle Speeds



Reported Collisions (2018-22)



Vehicle vs. Vehicle



Vehicle vs. Pedestrian



Vehicle vs. Bicyclist

Tentative Schedule



A more detailed timeline will be provided as the design progresses.

What We've Heard



Survey Feedback: Top Priorities

1. Improve walking conditions
2. Slow vehicle traffic
3. Improve bicycling conditions



What We've Heard

- Improve intersections with Bodega Ave./Washington St., Western Ave., Bassett St., and Liberty St.
- Address accessibility, walking, bicycling, and speeding throughout the corridor
- Address spillover parking and loading impacts of school, church, and Crooked Goat/ACME Burger
- Address narrow conditions (including sidewalk gaps) near West St.

Proposed Improvements



Typical Intersection Enhancements



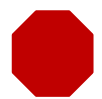
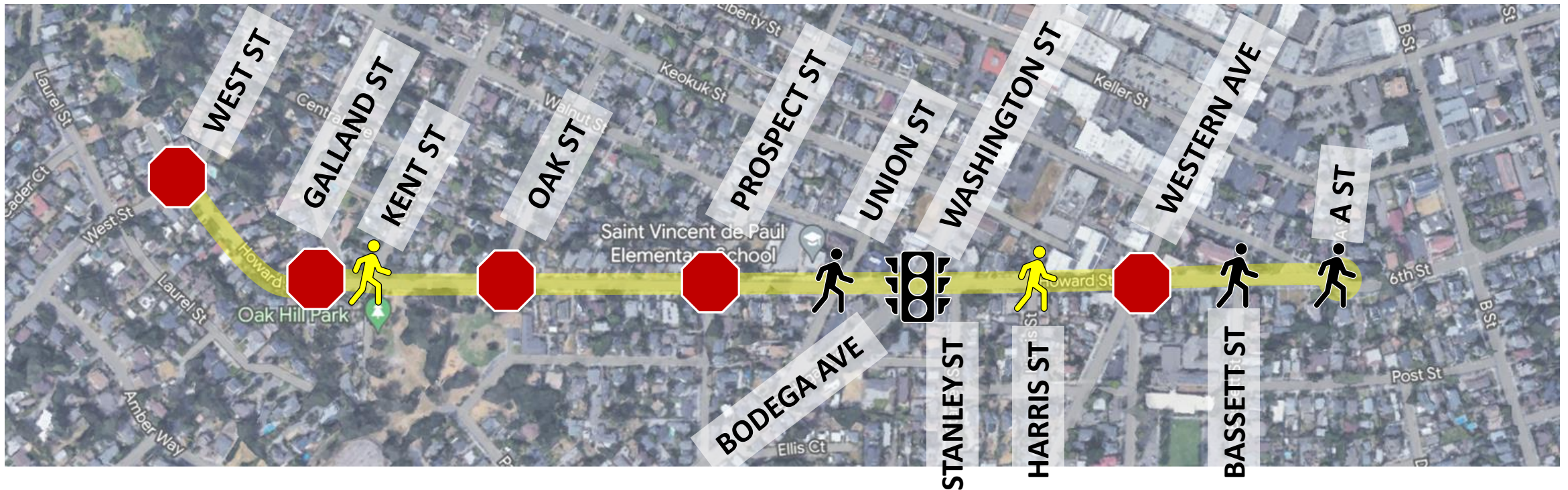
- 1) High-visibility “ladder” crosswalk
- 2) Accessible curb ramp
- 3) Concrete curb extension (“bulbout”) & parking prohibition near crosswalk (“daylighting”)
- 4) Rapid-flashing beacon (at locations without stop signs)

Typical Intersection Enhancements



Median refuge islands

Intersections & Crosswalks



Stop Sign



Traffic Signal

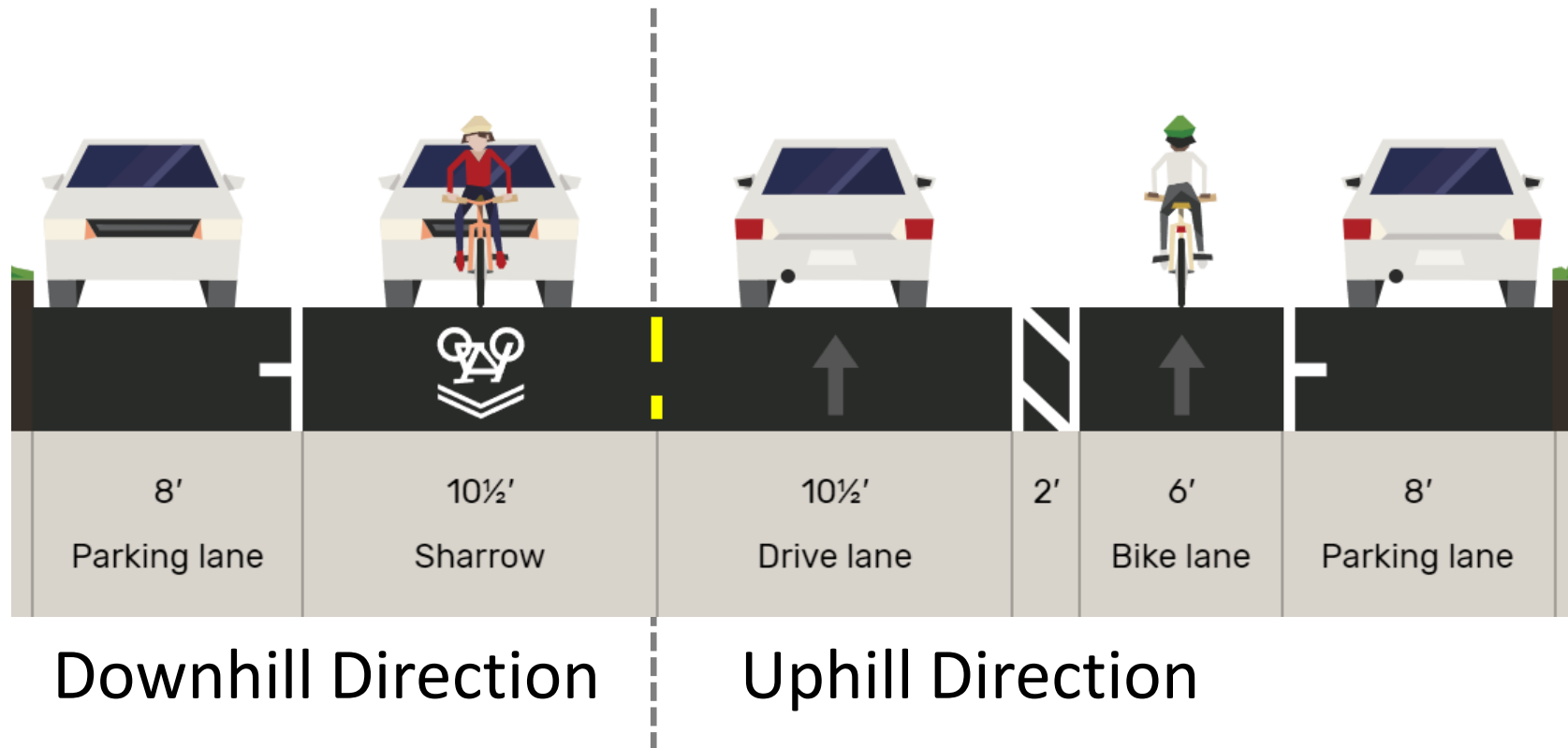


Existing Crosswalk
(w/o Stop or Signal)



Proposed Crosswalk
(w/o Stop or Signal)

Uphill Bike Lanes



Uphill Bike Lanes



Sidewalk Improvements near West Street



Facing south from West Street

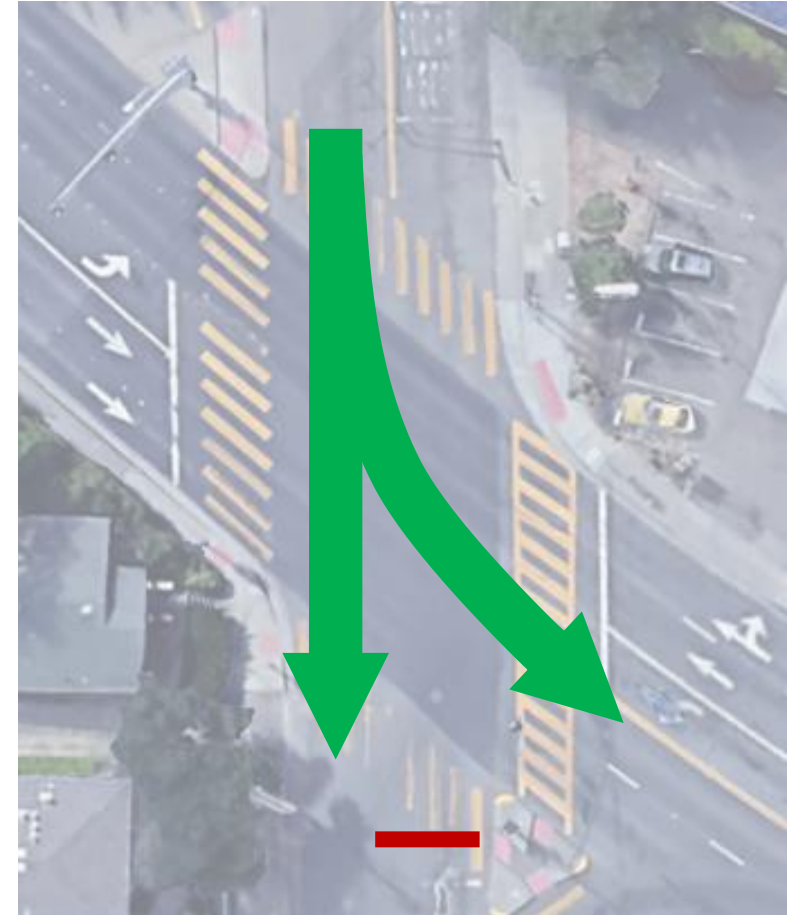
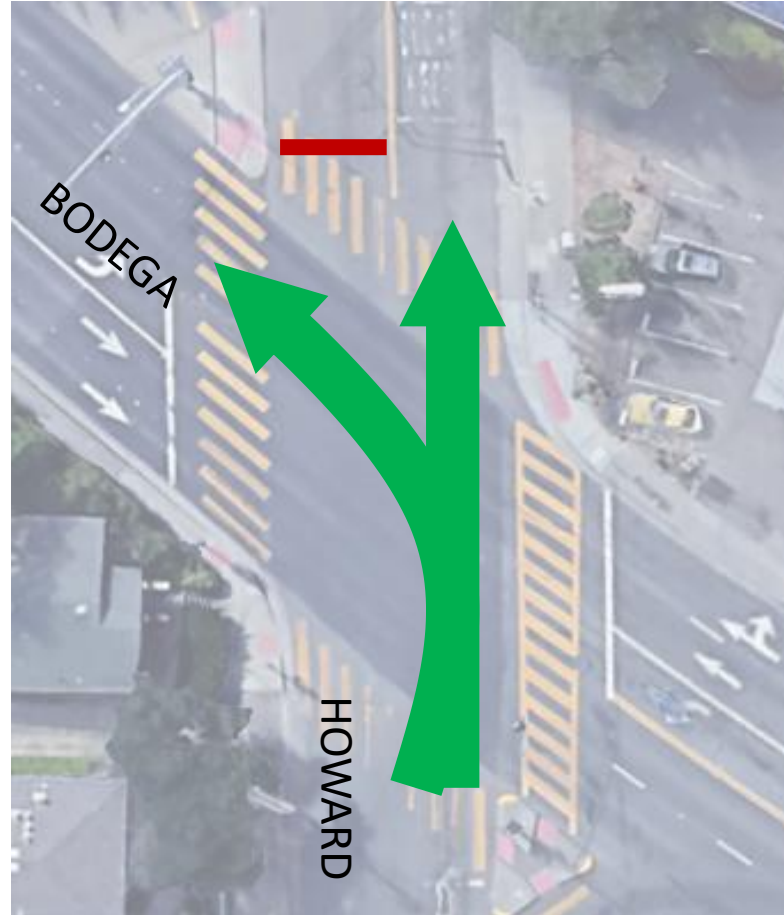
Sidewalk Improvements near West Street



Facing north toward West Street

Signal Improvements at Bodega/Howard

Split signal phases:
northbound
and
southbound
traffic no
longer share
“green”



Signal Improvements at Bodega/ Washington

Leading pedestrian intervals:
pedestrians receive “walk”
signal 5 seconds before drivers
receive “green”



Signal Improvements at Bodega/ Washington

Bike boxes: create an advanced waiting area for people on bikes so they can establish a more visible position and more easily make left turns

Note: people on bikes may use leading pedestrian intervals



Reconfiguration Options: Liberty & A

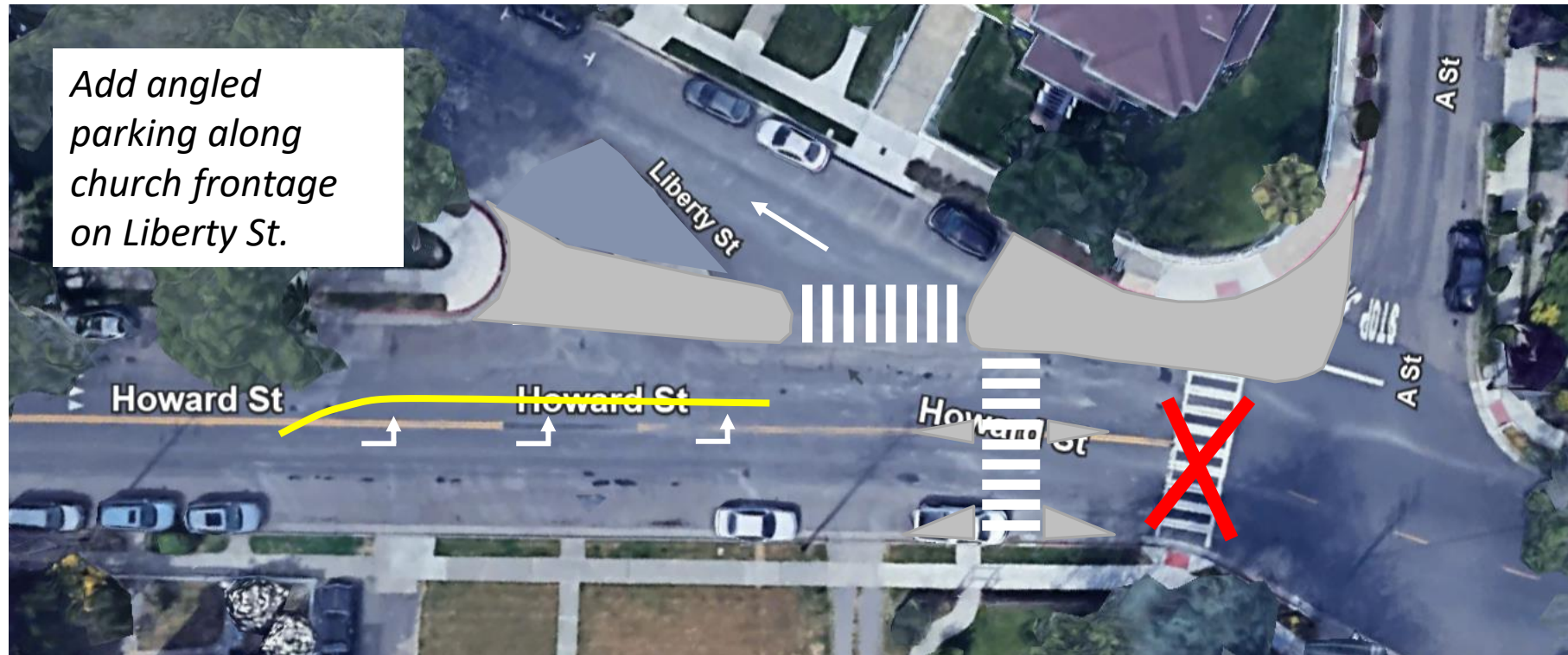


Reconfiguration Options: Liberty & A



Option 1: Sidewalk and median extensions with relocated crosswalk

Reconfiguration Options: Liberty & A



Option 2: Convert Liberty Street to one-way (northbound)

Additional Notes

- Reviewing street light coverage and drainage/stormwater issues
- Exploring opportunities for bioswales & street trees
- Considering prohibiting left turns from Stanley Street onto Howard
- Parking Study launching Spring 2024



Discussion





Thank You!

TO LEARN MORE AND SUBSCRIBE TO UPDATES, GO TO
CITYOFPETALUMA.ORG/HOWARDSTREET