

General Plan Advisory Committee Reappointments

City Council Meeting: February 6, 2023

Appendix 2: Graphics

Applicant addresses were coded to correspond to a quadrant of Petaluma as shown below.

Figure 1: City Quadrants

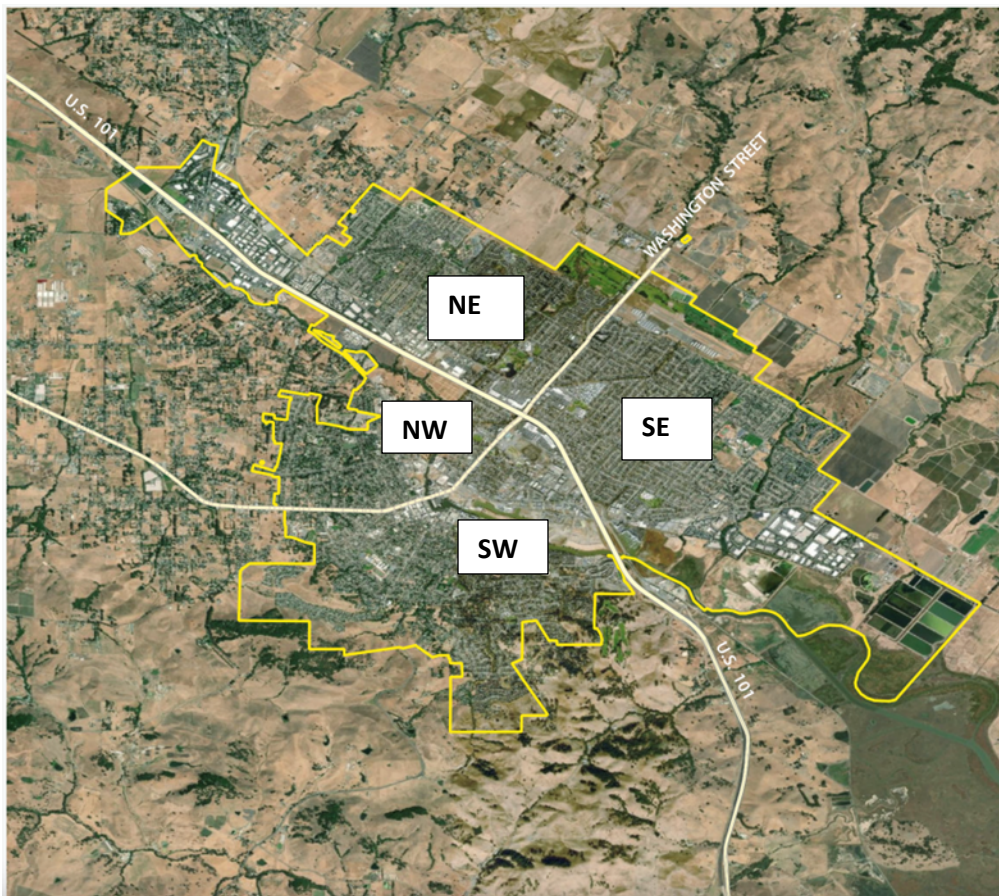


Table 1: Current GPAC Member Summary

Number	Name	Quadrant	Housing	Land Use, Community Character, Historic Preservation	Recreation, Parks, Arts	Sustainability, Climate Change, Conservation, Environment	Social and Environmental Equity and Strong Economy	Health, Resiliency, Hazards, Safety	Transportation
1	Stephanie Blake	SW	0	0	REA	0	SOE	0	0
2	Mary Dooley	NW	HU	0	0	SUS	0	0	T
3	Jessie Feller	SW	0	0	0	SUS	SOE	0	0
4	Dave Alden	SW	HU	LU	0	SUS	0	0	T
5	Ali Gaylord	SE	HU	0	0	0	0	0	0
6	Erin Chmielewski	SE	0	0	0	0	SOE	0	0
7	Roberto Rosila Mares	NE	0	0	0	0	SOE	0	0
8	Yensi Jacobo	SW	0	0	0	0	SOE	0	0
9	Roger Leventhal	NW	0	0	0	SUS	0	0	T
10	Iliana Inzunza Madrigal	SW	0	0	0	0	SOE	0	0
11	Joshua Riley Simmons	SW	0	0	0	0	SOE	0	0
12	Bill Wolpert	SW	0	LU	0	SUS	0	0	0
13	Kris Rebillot	NE	0	0	0	0	0	HR	0
14	Phil Boyle	SW	HU	0	0	SUS	0	0	T
15	Sierra Downey	SE	0	0	0	0	SOE	0	0
16	Bill Rinehart	SW	0	LU	0	0	0	0	0

Figure 2: Current GPAC Member City Quadrant Representation

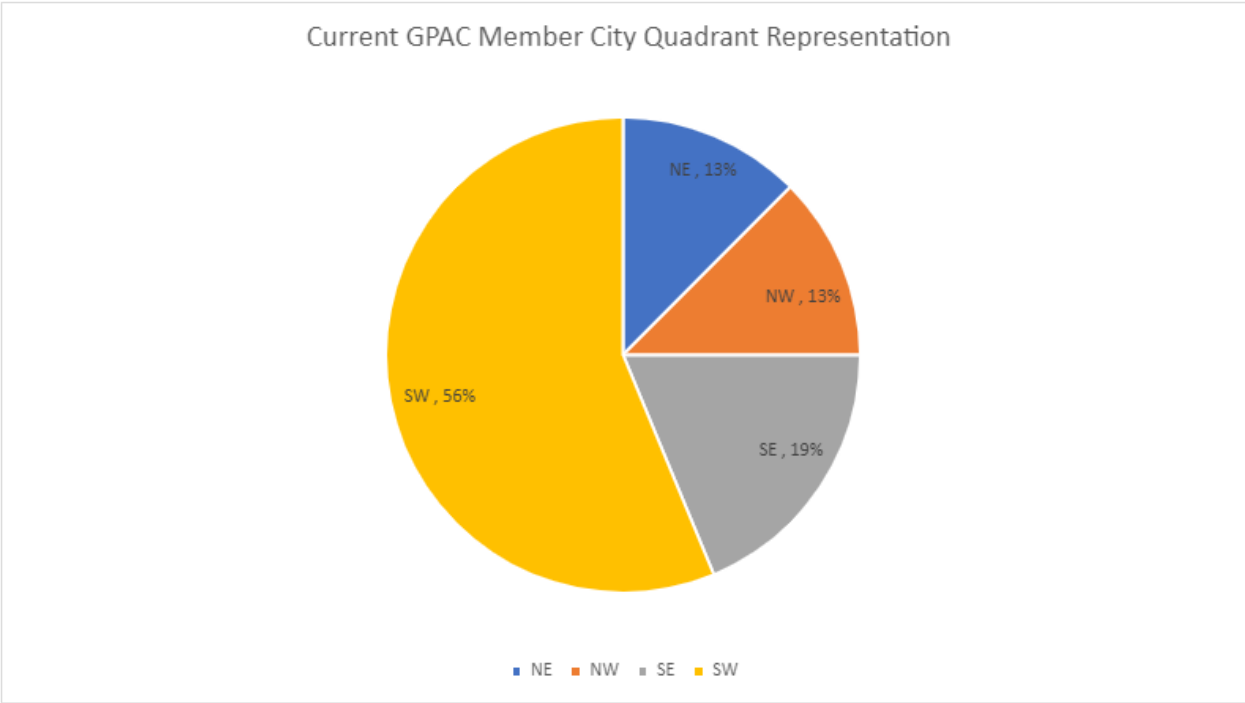


Figure 3: Current GPAC by Self-Declared Expertise or Interest

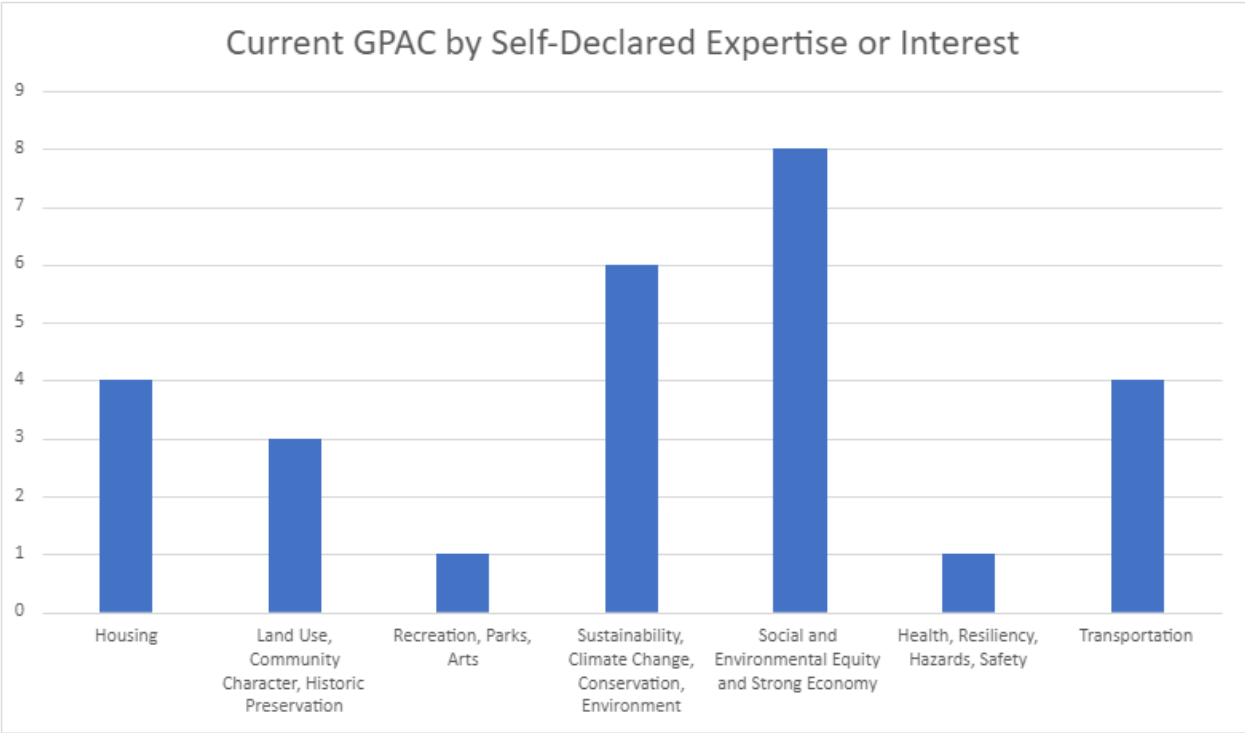
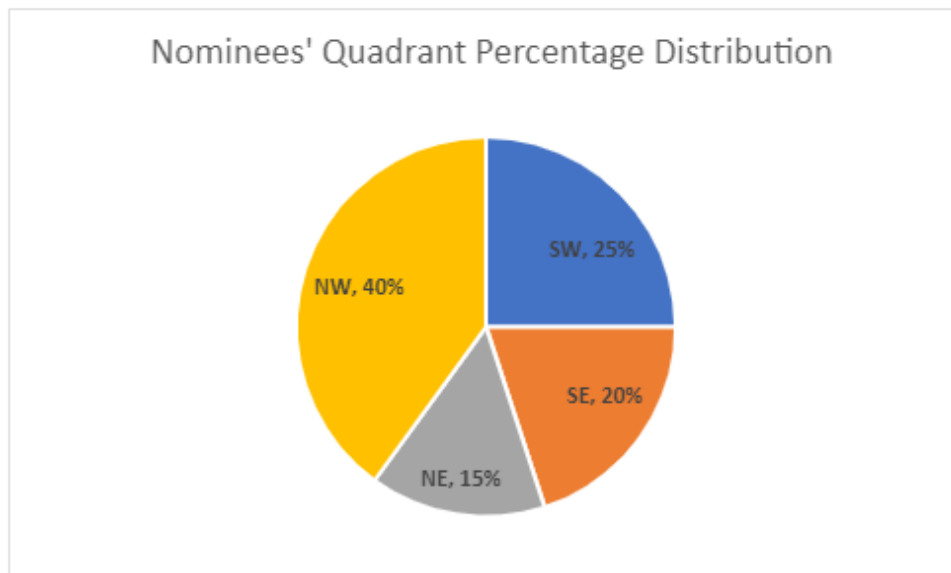


Table 2: GPAC Applicant Summary

Name	Quadrant	Housing	Land Use, Community Character, Historic Preservation	Recreation, Parks, Arts	Sustainability, Climate Change, Conservation, Environment	Social and Environmental Equity and Strong Economy	Health, Resiliency, Hazards, Safety	Transportation
Amy Hogan	SW	0	LU	REA	SUS	0	0	0
Bianca Ruiz	SE	HU	LU	0	0	0	0	0
Brent Newell	NE	0	LU	0	SUS	SOE	HR	0
Daniel Raff	NE	HU	0	0	0	SOE	0	0
Dylan Lloyd	NE	0	LU	0	0	SOE	0	0
Elda Vazquez-Izaguirre	SE	HU	0	0	0	SOE	0	0
Hal Bohner	NW	0	LU	0	SUS	0	0	0
Jerome Cleland	NW	HU	LU	REA	0	0	HR	0
John Hanania	SE	0	LU	0	0	SOE	0	0
Joy Ruppensburg	SE	0	0	REA	0	SOE	0	0
Kevin Kelly	NW	HU	LU	0	SUS	0	0	T
Lance Kuehne	NW	0	0	REA	SUS	0	0	0
Marjorie Sands	SW	HU	0	0	0	SOE	HR	0
Matt Hinds	NW	0	LU	0	SUS	SOE	0	T
Richard Thornton	NW	HU	LU	REA	0	SOE	0	T
Ronald Chestnut	SW	0	LU	0	0	SOE	0	0
Sharon Kirk	SW	HU	LU	0	SUS	SOE	0	T
Susan Kirks	NW	0	0	0	SUS	0	0	0
Lizzie Wallack	SW	HU	LU	0	SUS	SOE	0	T
Teddy Herzog	NW	0	LU	REA	0	0	0	T

Figure 4: GPAC Applicant City Quadrant Representation



Note: One applicant, Matt Hinds, lives outside of city limits, but has a Petaluma address. Mr. Hinds is a farm operator.

Figure 5: GPAC Applicants by Self-Declared Expertise

