

Mary Fuller McChesney Estate Acquisition

Presentation to the
Senior Advisory
Committee

May 27, 2022



Item Agenda

Goals of Presentation

Background of Mary Fuller McChesney

Public Art Committee Project and Decision

Recommendation to City Council

Selected Artworks*

Selected Locations*

Role of the Senior Advisory Committee

Next Steps

Questions and Comments

*Selections are not finalized

Goals of Presentation

- Summarize and provide status on PPAC project
- Present selected* artworks and locations
- Discuss role of SAC
- Inform SAC of next steps
- Welcome feedback, suggestions, and comments

*Selections are not finalized

Background of Mary Fuller McChesney



Courtesy of the Bohemian



Courtesy of Berkleyside

Background of Mary Fuller McChesney (cont.)



Courtesy of Sonoma Index-Tribune



Courtesy of
Calabi Galleries



Courtesy of the New York Times

Public Art Committee (PPAC) Project and Decision

- Opportunity to acquire artworks from McChesney estate
- Exhibition at Astro Motel (Santa Rosa)
- Site visits to McChesney residence, Petaluma Regional Library, and other sites
- Discussion, ranking artworks, curation, public reception
- April 27th PPAC meeting action to recommend \$100k expenditure from Public Art Fund to acquire, transport, install, conserve
- Ad hoc subcommittee finalizing selection of artworks and locations

Recommendation to City Council

- Approve recommendation from PPAC
- Illustrate how the Public Art Program intends to preserve legacy of Mary Fuller McChesney
- Present locations and selected works, curation
- Discuss public interaction, community engagement, and interpretation of the collected works

Selected Works*

“Medusa” (1/12)



Selected Works*

“Rabbit” (2/12)



Selected Works*

“Owl Bench” (3/12)



Selected Works*

“Totem” (4/12)



Selected Works*

“Woman with Owl and Leg
Out to the Side” (5/12)



Selected Works*

“Coyote Goddess with Birds”
(6/12)



Selected Works*

“Cat” (7/12)



Selected Works*

“Ram” (8/12)



Selected Works*

“Coyote Goddess with Birds”
(9/12)



Selected Works*

“Shape Totem” (10/12)



Selected Works*

“Lion Blocks” (11/12)

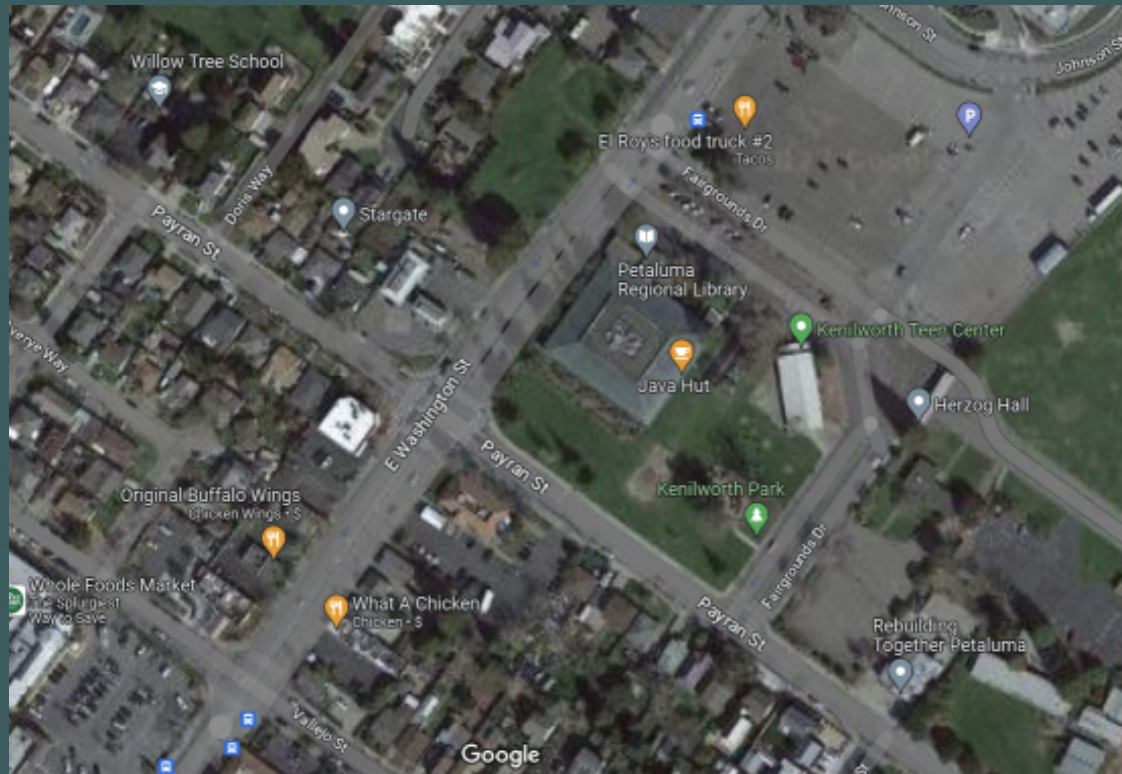


Selected Works*

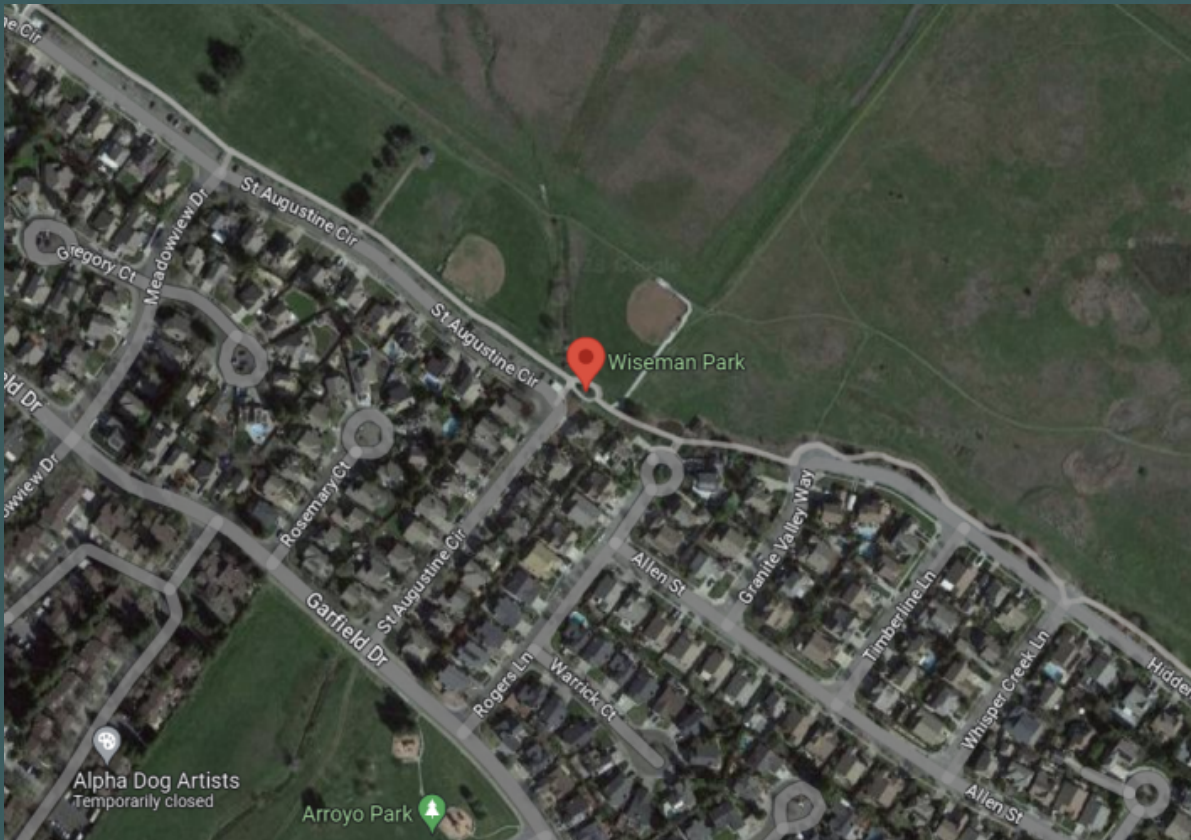
“Snake Goddess” (12/12)



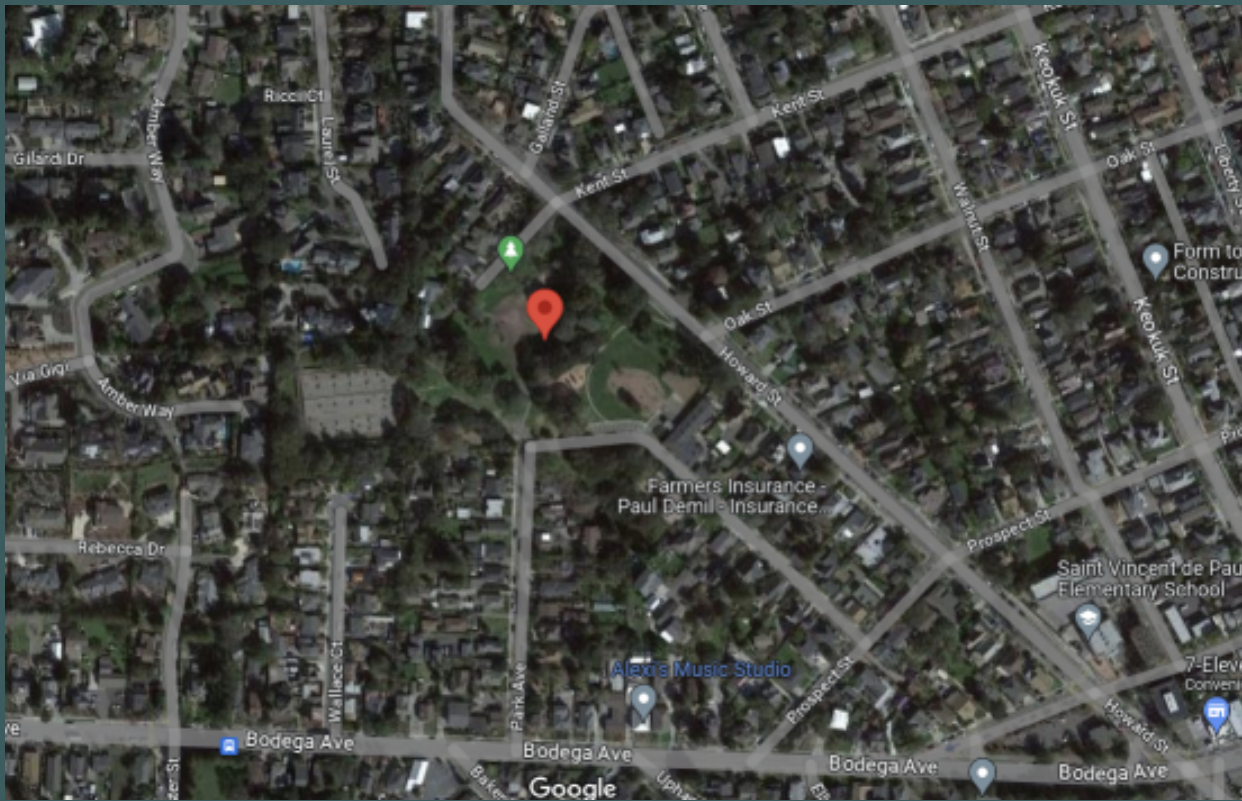
Location #1: Petaluma Regional Library (150 Fairgrounds Drive)



Location #2: Wiseman Park (2175 St Augustine Circle)



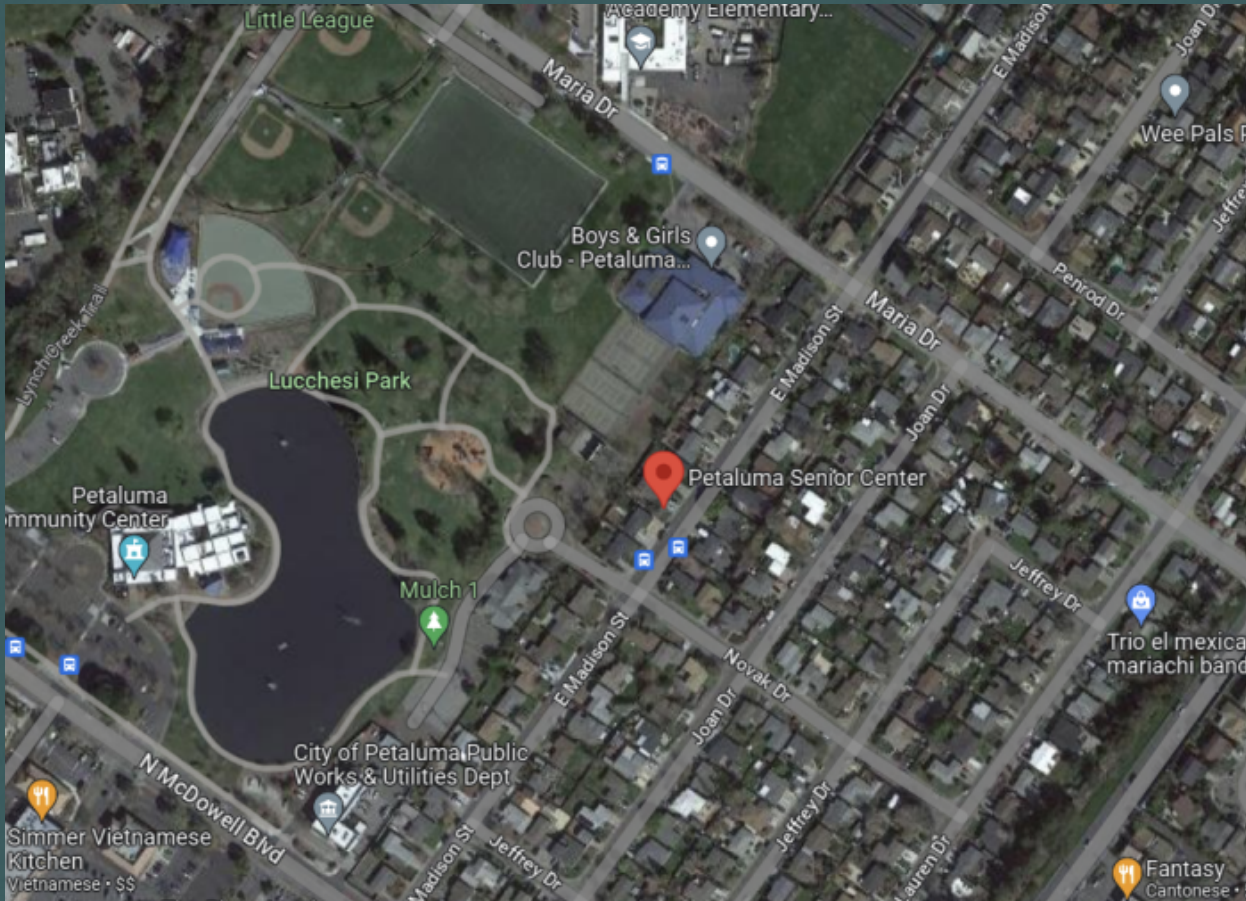
Location #3: Oak Hill Park (1 Parkside Terrace Blvd)



Location #4: Roundabout at Corona Rd & Sonoma Mtn Pkwy



Location #5: Senior Center (211 Novak Dr)



Role of Senior Advisory Committee

- SAC can determine level of engagement in project
- Suggestions and feedback on artwork(s) for Senior Center



Next Steps

- Staff and PPAC coordinating installation and curation
- Council approval of expenditure (July, TBD)
- After installation:
 - Research of McChesney archive at Library
 - Collecting/interview Estate for oral tradition
 - Compiling interpretative didactics (e.g. info signs)
 - Creating online content, including self-guided tour
 - Opportunities for docent-led tours (tour guides)

Questions or Comments?

David Ward, Public Art Specialist
Community Development Department

dward@cityofpetaluma.org

<https://cityofpetaluma.org/planning/public-art>

Thank you for your time!