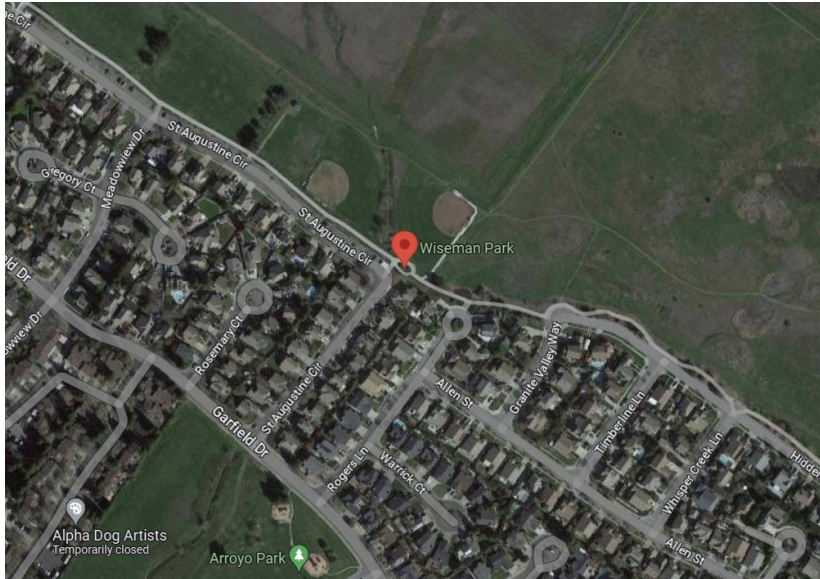


## MFM Acquisition 1: Current Location Alternative: Wiseman Park (2175 St Augustine Circle)



Description: *Medusa* and *Snake Goddess* can be curated at variety of spaces along park entrances and walkways. Use patterns (i.e. organized sports, loading/unloading zones, storage and maintenance areas) should be observed.

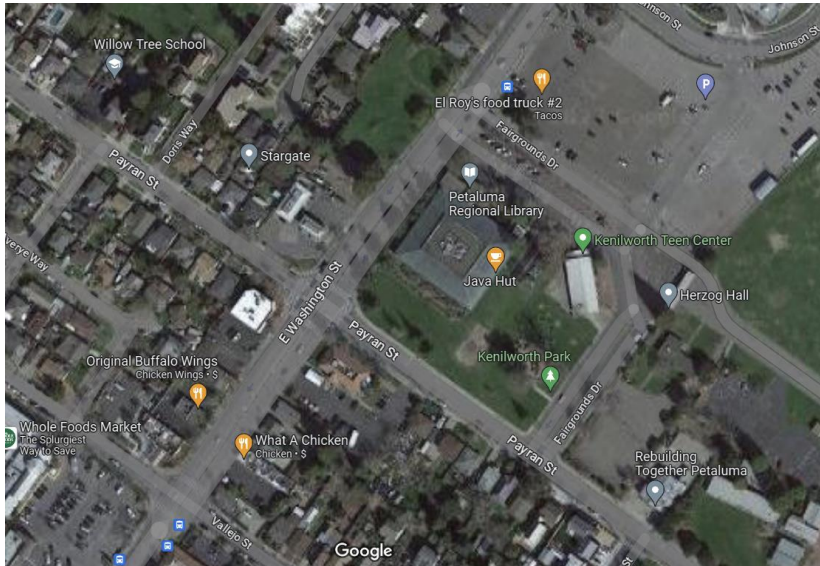
Works (2):

- AM-1 (Medusa) - \$7,500
- AM-18 (Snake Goddess, **bronze**) - \$6,500

**Location Subtotal: \$14,000**



## MFM Acquisition 2: Current Location Alternative: Petaluma Regional Library (150 Fairgrounds Drive)



Description: *Rabbit, Cat, Ram, and Lion Blocks* added to existing library collection. Reduces installation cost to Public Art Fund. Interior space could host artworks in lobby (pending site interior renovation), exterior space could add artworks to Daily Acts garden or Childrens garden, depending on durability, scale, and curation parameters.

### Works (4):

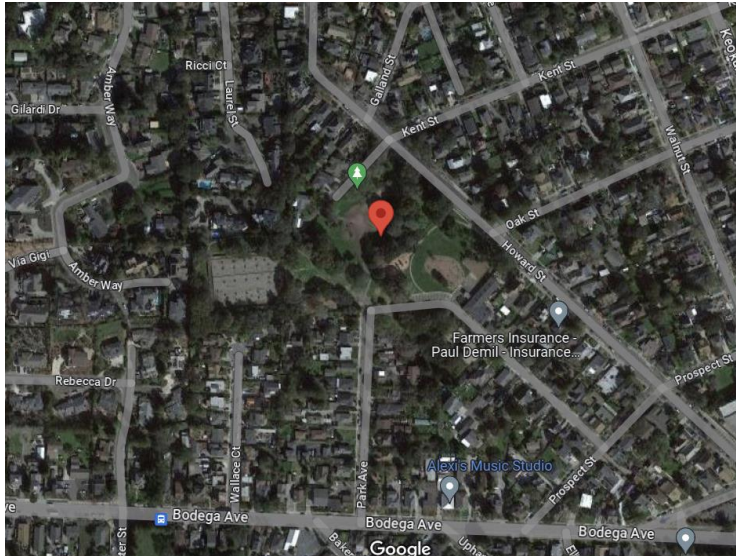
- AM-2 (Rabbit) - \$4,000
- DC-8 (Cat) - \$2,500
- DC-11 (Ram) - \$450
- DC-21 (Lion Blocks) - \$1,800

**Location Subtotal: \$8,750**





## MFM Acquisition 3: Current Location Alternative: Oak Hill Park (1 Parkside Terrace Boulevard)



Description: *Owl Bench* and *Coyote Goddess* could provide seating nearby playground or Petanque/basketball court and be placed near pedestrian entrances to park (near Howard or Pleasant), or nearby labyrinth.

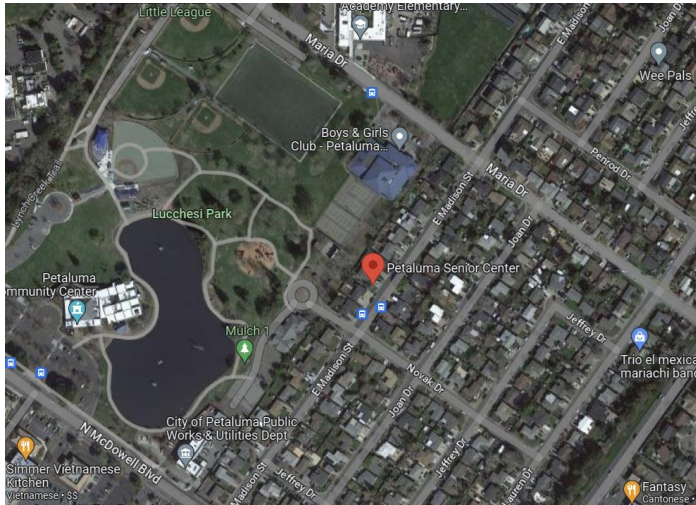
Works (2):

- AM-5 (Owl Bench) - \$4,800
- DC-14 (Coyote Goddess, **bronze**) - \$10,000

**Location Subtotal: \$14,800**



## MFM Acquisition 4: Current Location Alternative: Senior Center (211 Novak Drive)



Description: *Woman with Owl and Leg Out to the Side* suitable for a variety of locations, along pedestrian/bike ways near lake or nearby playground adjoining to Lucchesi (towards Community Center).

Works (1):

- AM-15 (Woman with Owl) - \$5,000

**Location Subtotal: \$5,000**



## MFM Acquisition 5: Current Location Alternative #5: Corona Road / Sonoma Mountain Parkway Roundabout



Description: standalone *Shape Totem* at the center roundabout. Depending on Public Works' input, artwork can be considered for a pedestal or pad to meet ADA compliance and vision clearance triangle.

Works (1):

- DC-15 (Shape Totem) - \$10,000

**Location Subtotal: \$10,000**





## MFM Selections for Alternate Locations (Currently Unassigned)



Description: *Totem* and *Female/Male Figures* suitable for a variety of locations. Discussion of works for Wiseman Park or for Oak Hill Park locations, pending installation and site constraints.

Works (4):

- AM-13 (Totem) - \$5,000
- AM-7 (Male Figure) - \$4,200
- AM-8 (Female Figure) - \$4,800

## Project Selection Totals

Location	Acquisition Amount (~60%)	Install/Transport Estimate (~20%)	Conservation Estimate (~10%)**	TOTALS
Wiseman Park	\$14,000	\$2,800	\$1,400	<b>\$18,200</b>
Petaluma Regional Library	\$8,750	\$1,750*	N/A*	<b>\$10,500*</b>
Oak Hill Park	\$14,800	\$2,960	\$1,480	<b>\$19,240</b>
Senior Center	\$5,000	\$1,000	\$500	<b>\$6,500</b>
Corona/SMP Roundabout	\$10,000	\$2,000	\$1,000	<b>\$13,000</b>
Alternates	\$18,800	\$3,760	\$1,880	<b>\$24,440</b>
<b>TOTAL</b>	<b>\$71,350</b>	<b>\$14,270</b>	<b>\$6,260</b>	<b>\$91,880</b>

\*Petaluma Regional Library totals do not include installation and conservation costs, as the purchase and transportation would be gifted with the artworks. \*\*Conservation may vary depending on previous, pre-exhibition conservation work for Astro Motel.