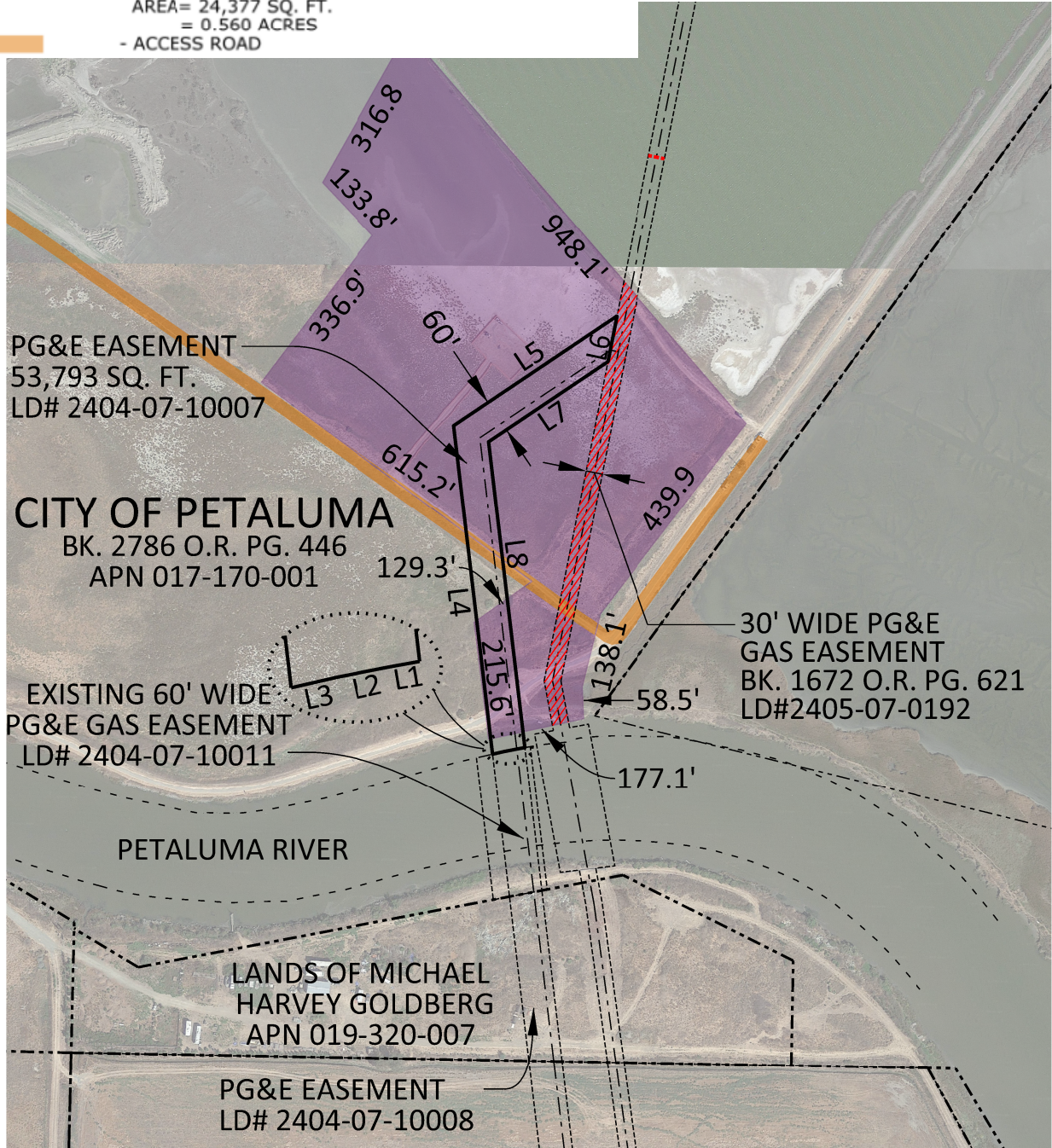


LEGEND

- PROPERTY LINE
- PROPOSED PG&E EASEMENT LINE
- PG&E EXISTING EASEMENT LINE
- PG&E EASEMENT CENTER LINE
- OFFICIAL RECORDS
- ASSESSOR'S PARCEL NUMBER
- WORK SPACE
AREA= 506,887 SQ. FT.
= 11.637 ACRES
- PORTION ENCUMBERED BY 30' PG&E GAS EASEMENT
PER BK. 1672 O.R. PG. 621, SONOMA COUNTY RECORDS
LD# 24045-07-0192
AREA= 24,377 SQ. FT.
= 0.560 ACRES
- ACCESS ROAD

0 150 300
1 INCH = 300 FEET



AUTHORIZATION
74030729

BY —
DR RLJS
CH J6F9
O.K. J6F9
DATE 4/11/2022

APPRAISAL EXHIBIT
LANDS OF CITY OF PETALUMA
R-708-L-021G PETALUMA
PETALUMA RIVER CROSSING_4
PETALUMA, CALIFORNIA
PACIFIC GAS AND ELECTRIC COMPANY
San Francisco California



PROJ. NO.		
AREA	AREA 7, NORTH COAST	
COUNTY	SONOMA	
SCALE	1 INCH = 300 FEET	
SHEET NO.	2	OF 2
DRAWING NUMBER	L-10538	
CHANGE	0	